

UHF Band Omni Antenna

Model : TH-835



1.. GENERAL DESCRIPTION

P/N
TH-835-N(M)

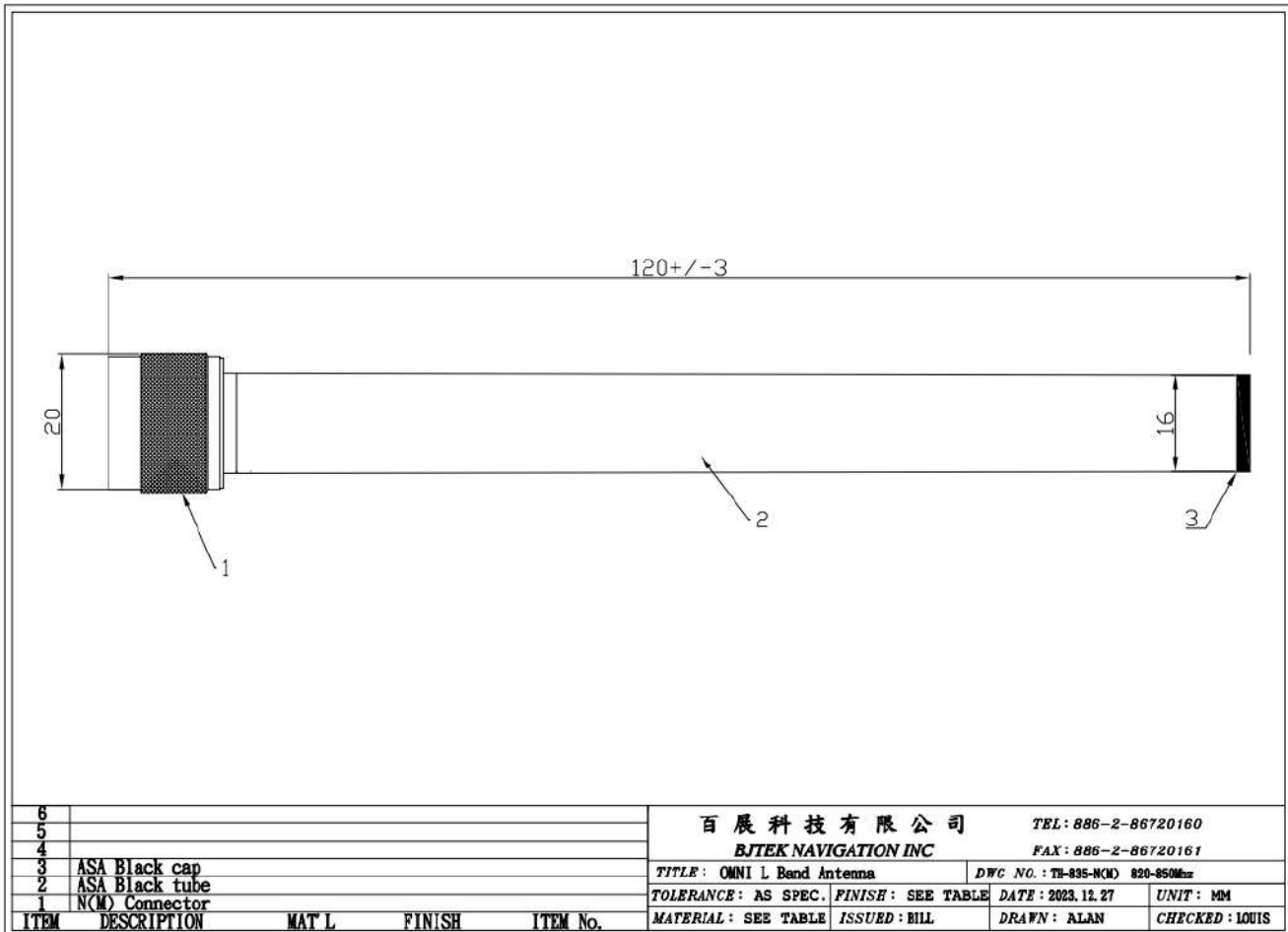
1.1 Electrical Properties

Parameter	Description
Frequency Band	820~850MHz
Nominal Impedance	50 ohm
Polarization	Vertical
V.S.W.R	2.0:1
Power	2W
Gain	1db

1.2 Mechanical Properties

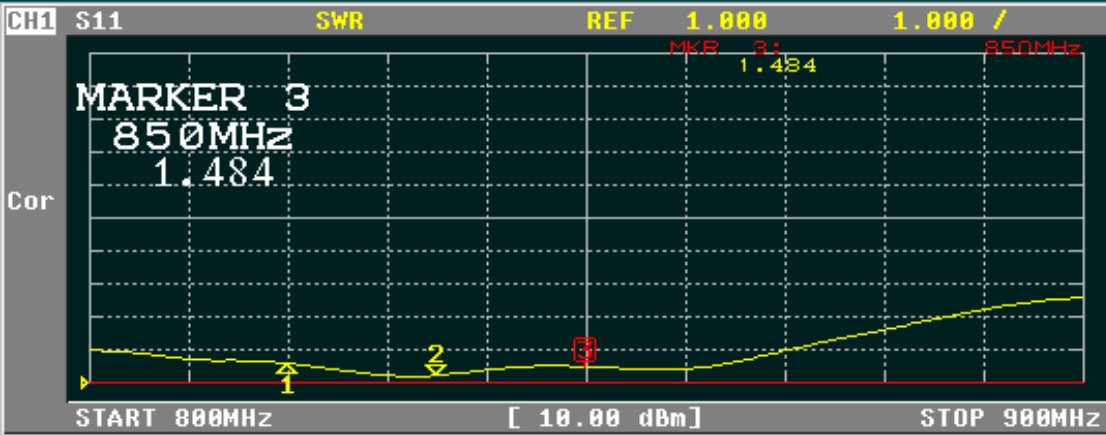
Parameter	Description
Antenna Type	External Antenna
Material	ASA
Touch Type	Screw Type
Connector Type	N Connector (Male)
Antenna Dimensions	120mm \pm 3
Antenna Color	Black
Operating Temperature Range	-45°C~+85°C
Storage Temperature Range	-45°C~+85°C

2. Appearance



3. Return Loss, V.S.W.R. and Smith Chart





CH1 MARKER LIST

1:	820.000MHz	1.627
2:	835.000MHz	1.232
3:	850.000MHz	1.484
4:		
5:		
6:		
7:		
8:		
9:		
10:		

ACTIVATE MARKER

MARKER 1

MARKER 2

MARKER 3

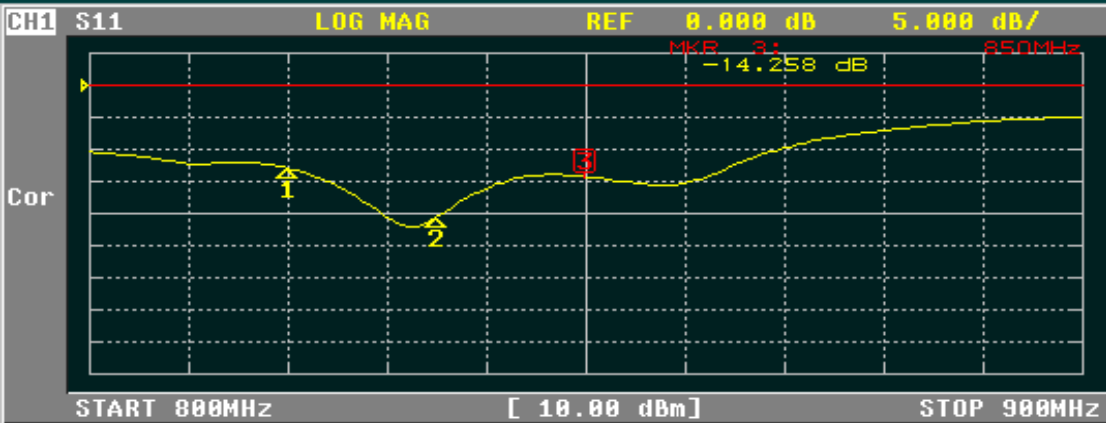
MARKER 4

MARKER 5

ACTIVATE MKR OFF

Return

More 1/2



CH1 MARKER LIST

1:	820.000MHz	-12.949 dB
2:	835.000MHz	-20.577 dB
3:	850.000MHz	-14.258 dB
4:		
5:		
6:		
7:		
8:		
9:		
10:		

FORMAT

LOG MAG

PHASE

DELAY

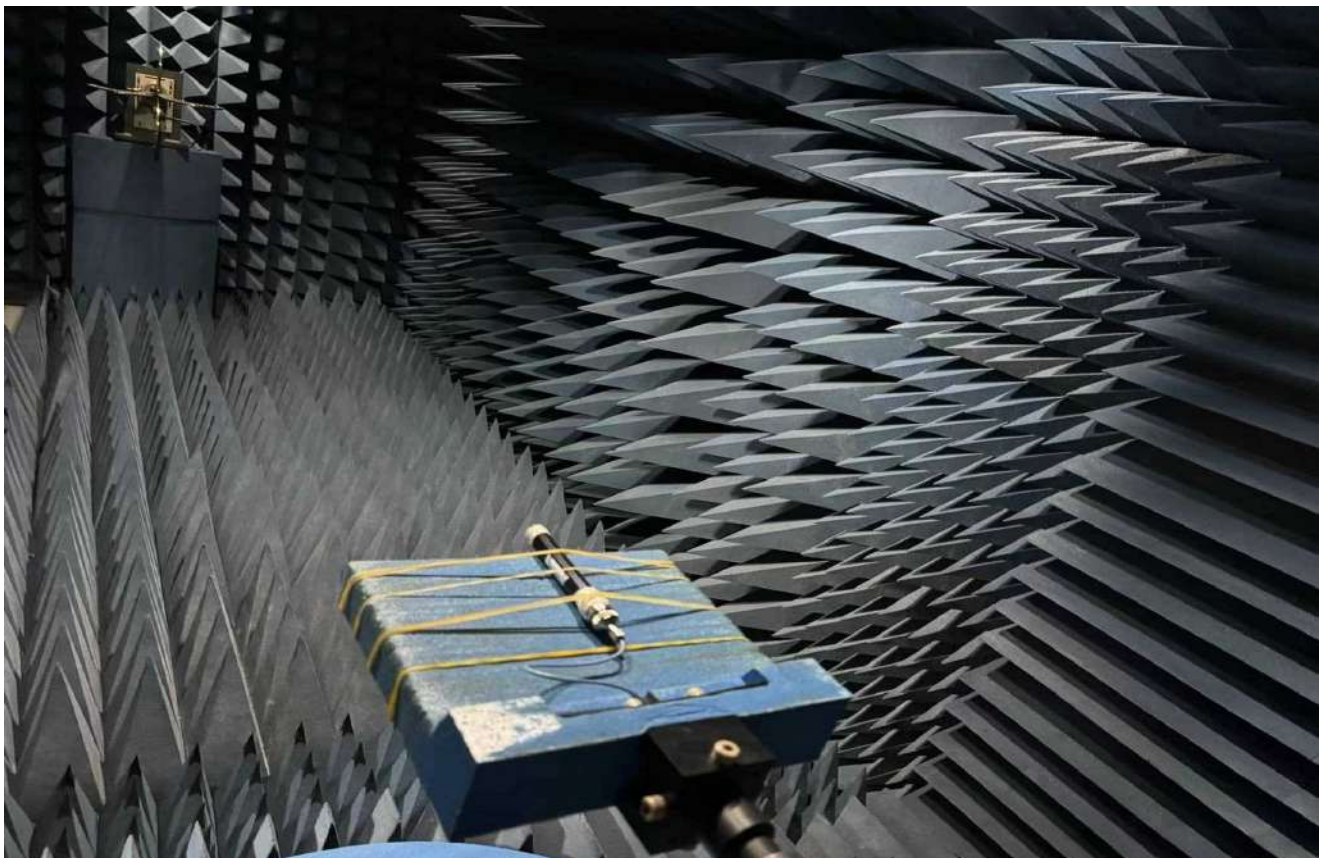
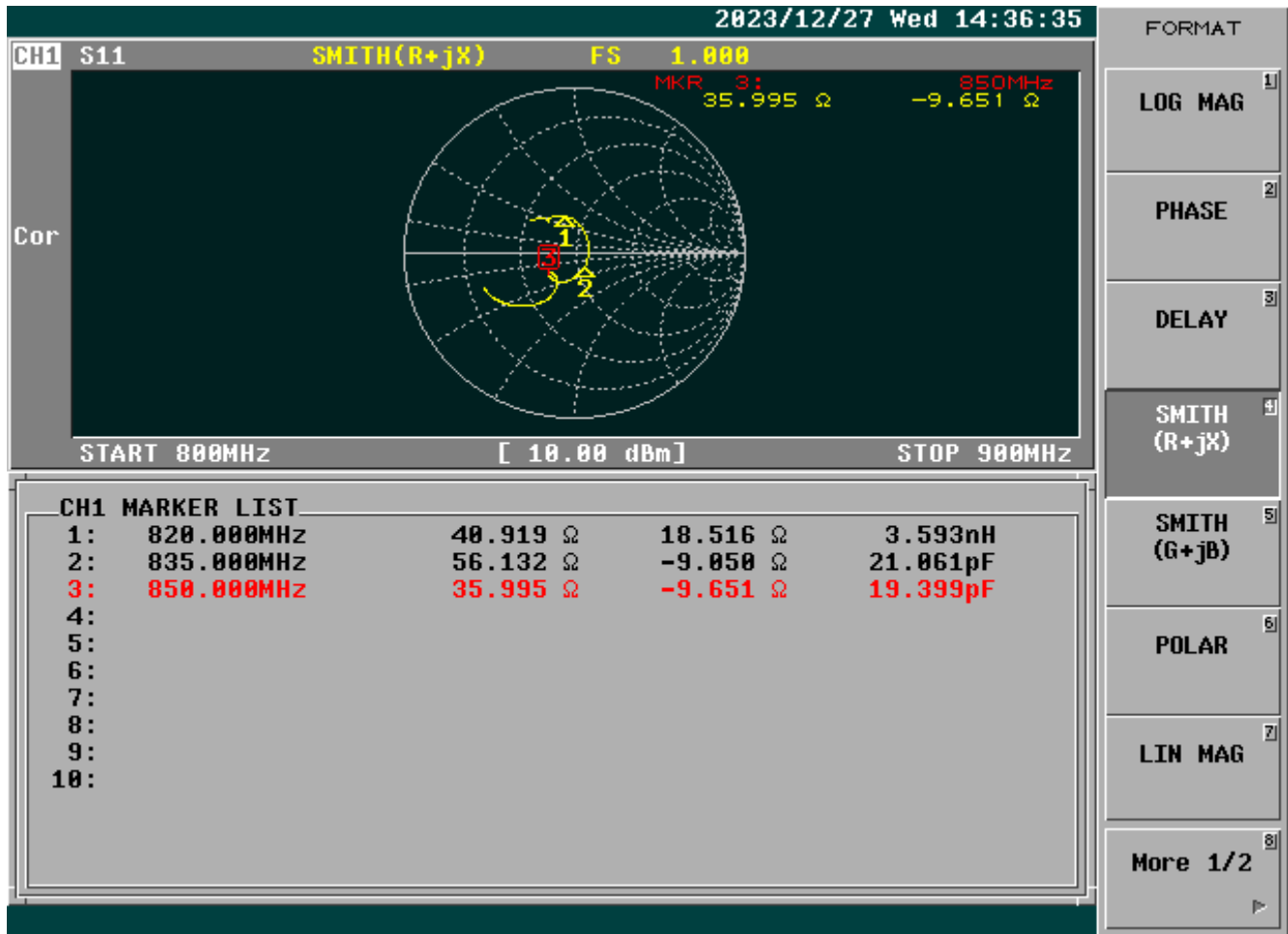
SMITH (R+jX)

SMITH (G+jB)

POLAR

LIN MAG

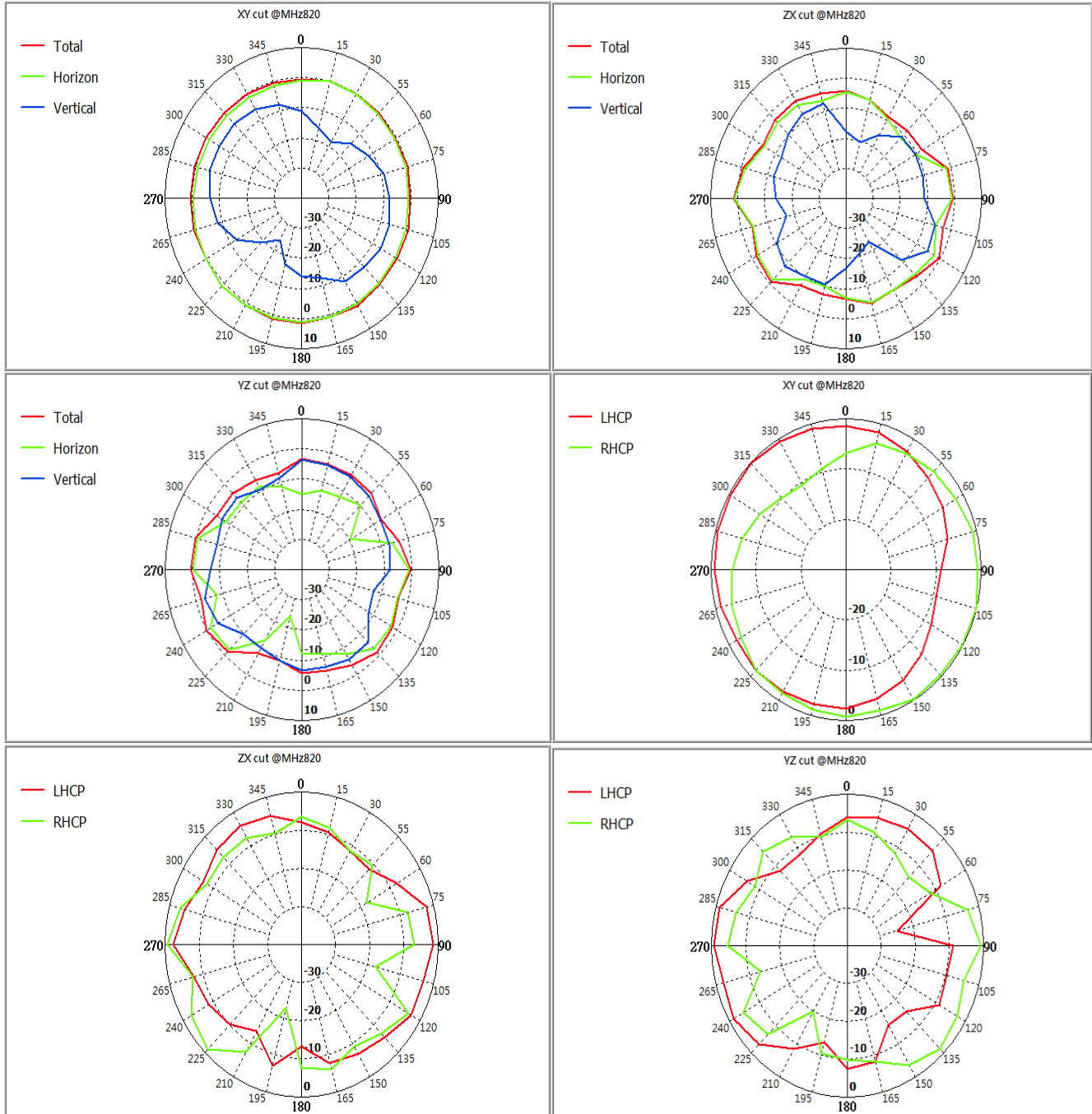
More 1/2

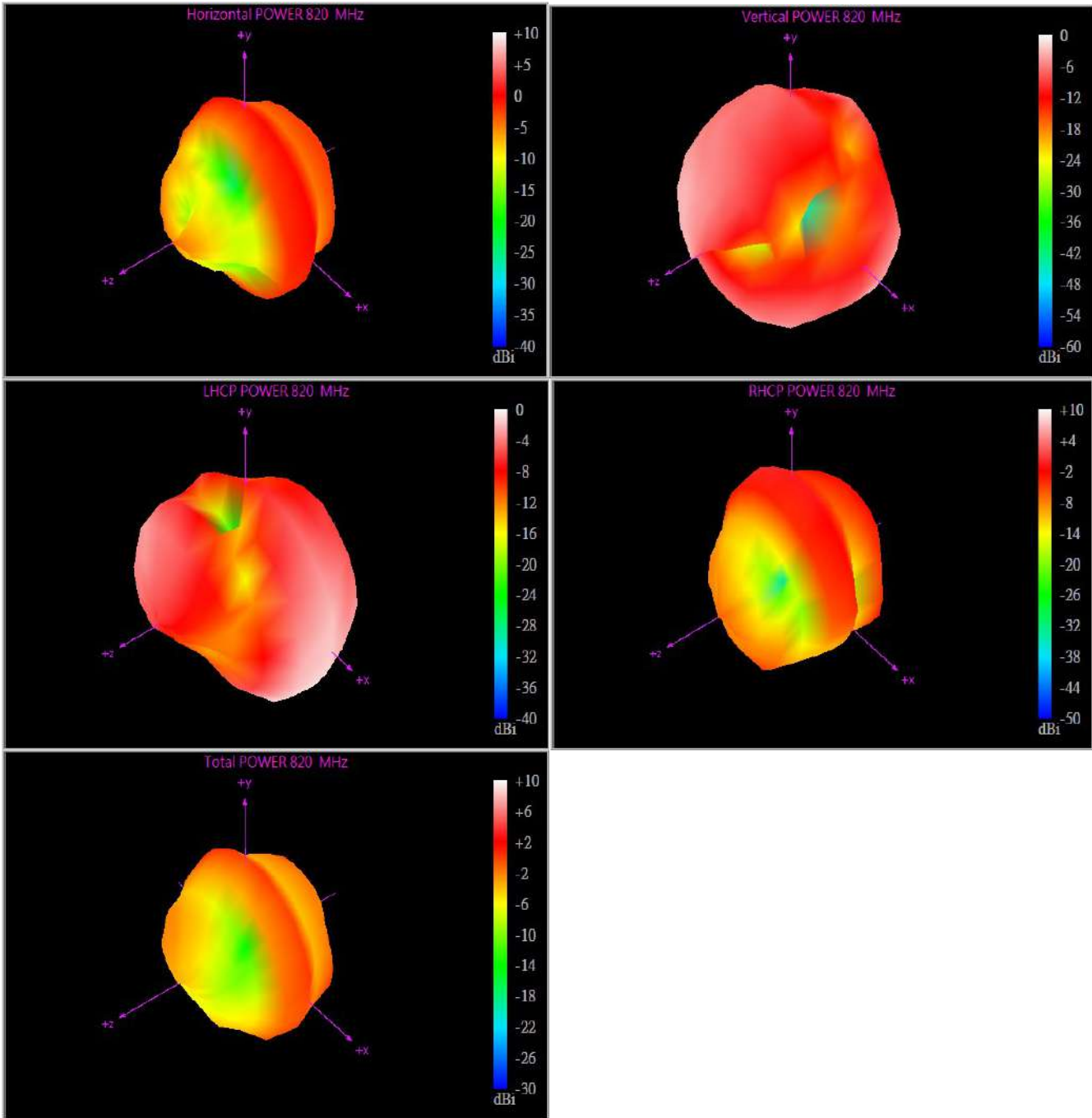


3D Total

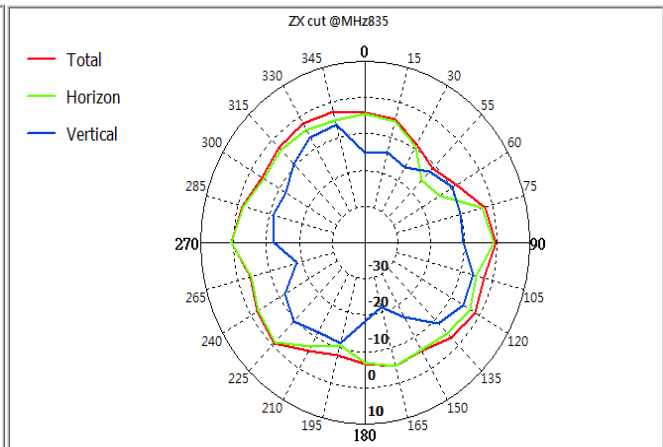
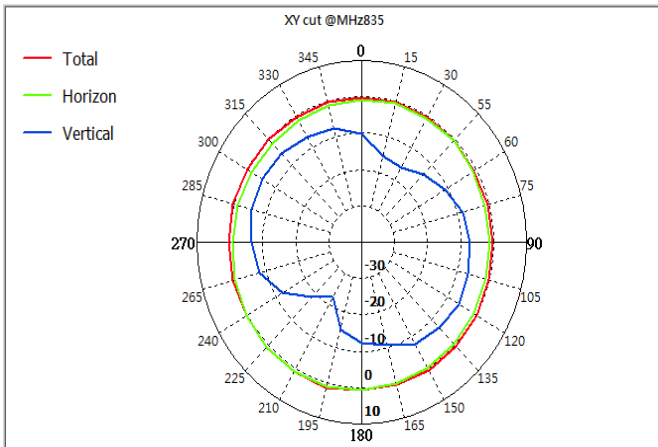
Frequency (MHz)	Upper Hem. PRP (dBm)	Lower HEM. PRP (dBm)	Efficiency (dB)	Efficiency (%)	Gain (dBi)	Tot. Rad.Pwr. (dBm)
810 MHz	-6.01	-5.38	-2.67	54.05	1.17	-2.67
820 MHz	-5.97	-5.25	-2.58	55.15	1.51	-2.58
835 MHz	-6.23	-5.41	-2.79	52.59	1.40	-2.79
840 MHz	-6.62	-5.81	-3.19	48.00	1.00	-3.19
850 MHz	-6.39	-5.60	-2.97	50.47	1.25	-2.97
860 MHz	-6.37	-5.47	-2.88	51.47	1.15	-2.88

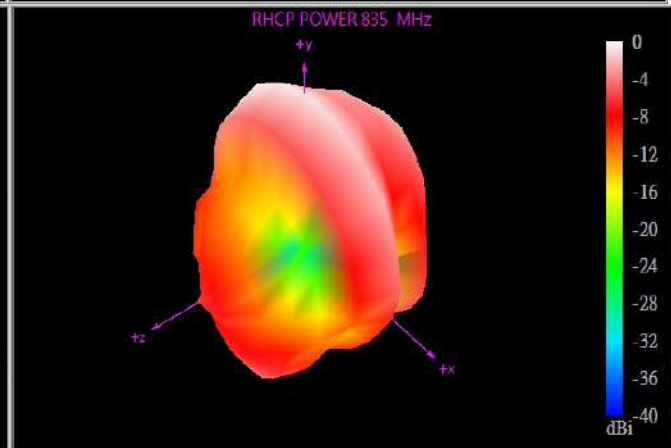
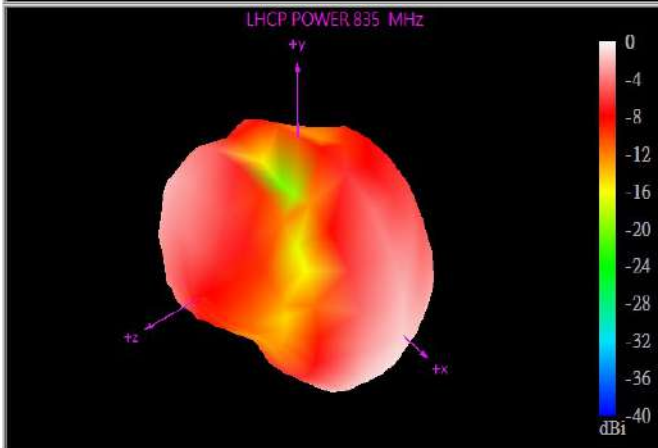
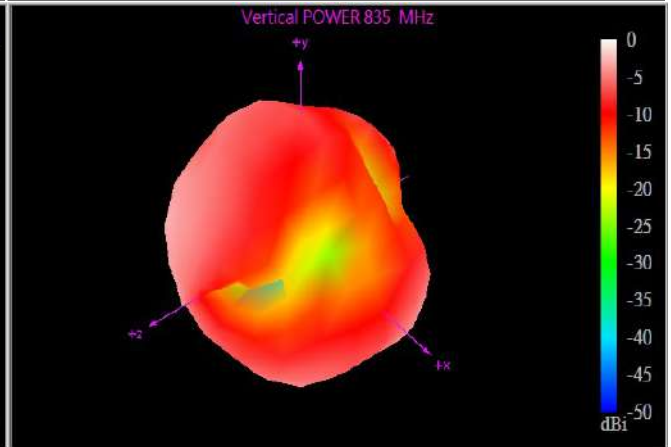
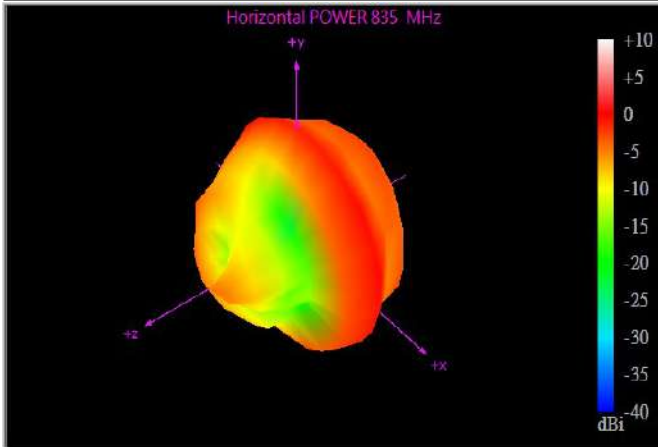
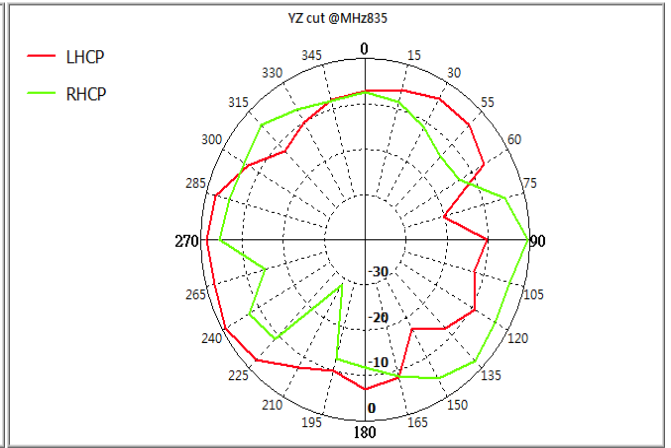
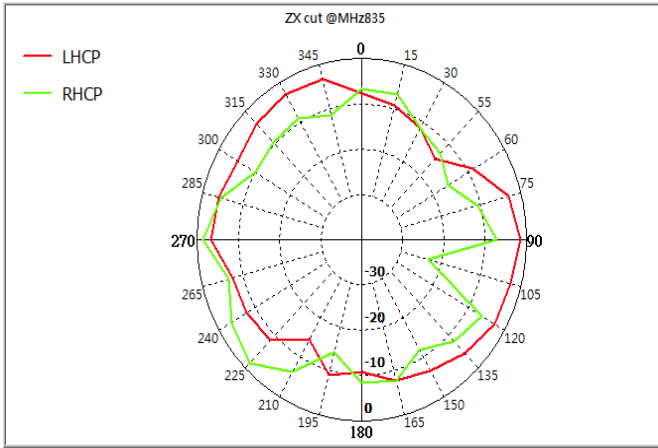
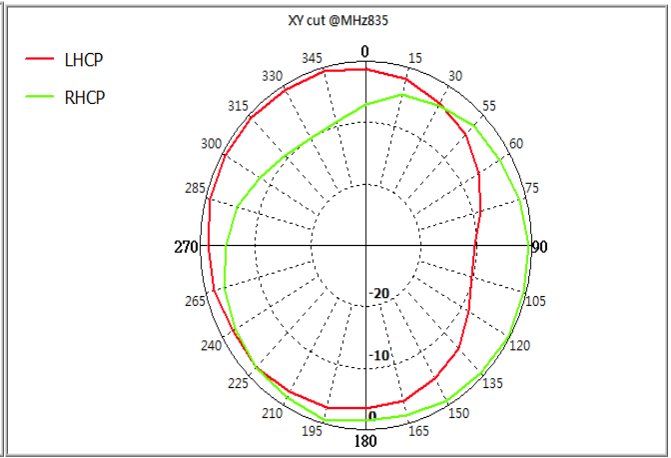
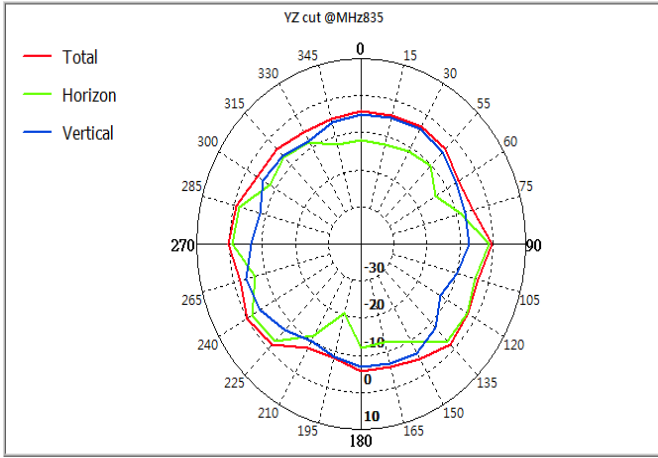
820MHz:

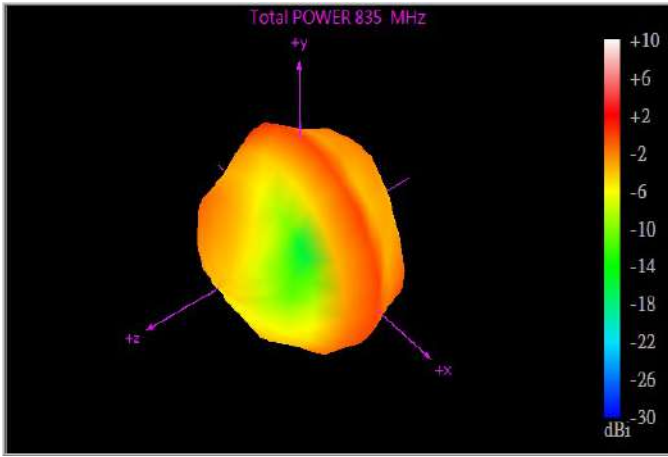




835Mhz:







850MHz:

