

L Band Gooseneck Antenna

MODEL: TH-1450F-TNC(M)



1. GENERAL DESCRIPTION

Model No	P/N
TH-1450F	TH1450F-TNC(M)

Below is a table summarizing the antenna design specification.

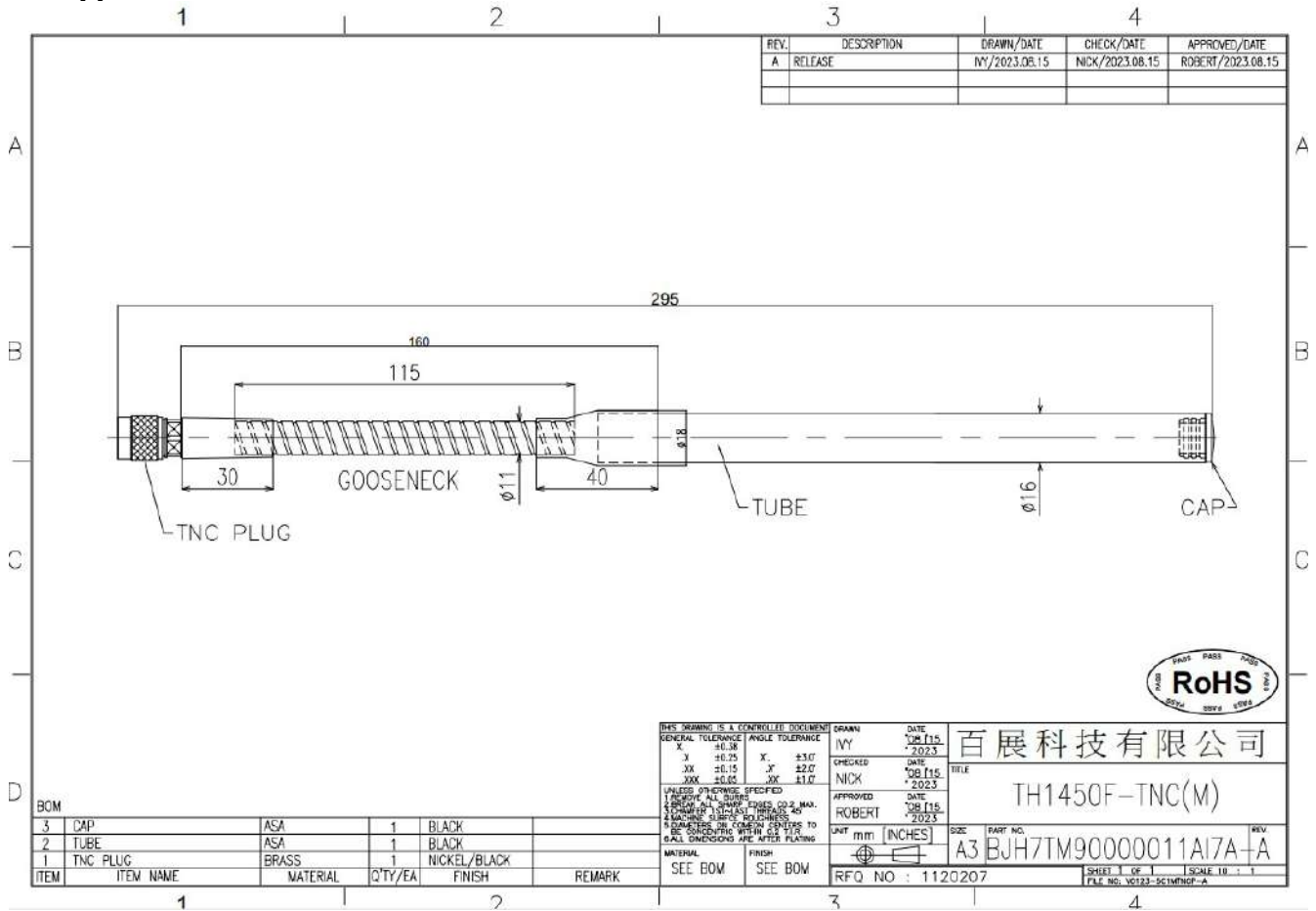
1.1 Electrical Properties

Parameter	Description
Frequency Band	1400~1500MHz ON GND
Nominal Impedance	50 ohm
Polarization	Vertical
Electrical Wave	Dipole
Return Loss	Please See Data-1
V.S.W.R	2.0 : 1
Gain	2.5db

1.2 Mechanical Properties

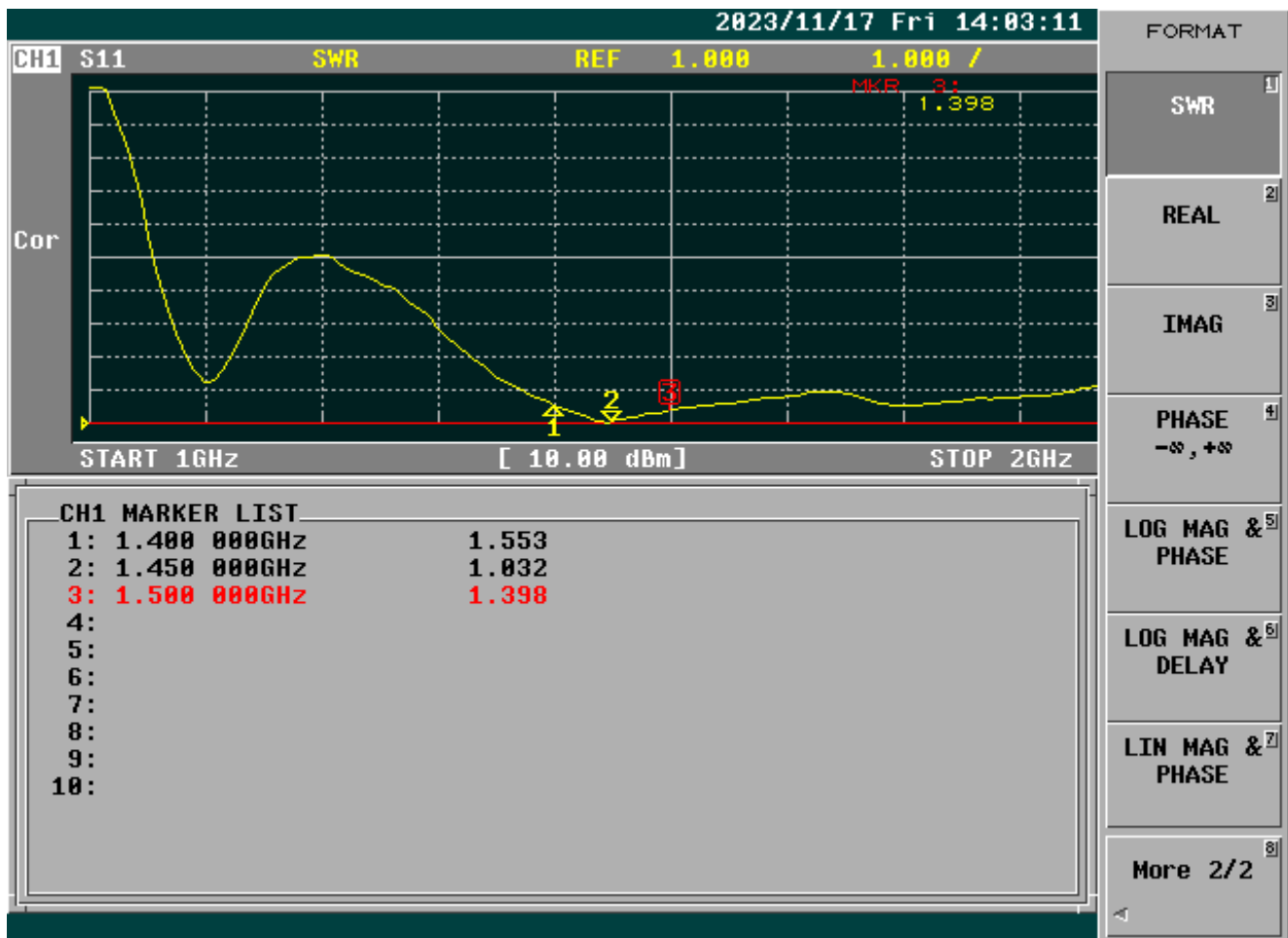
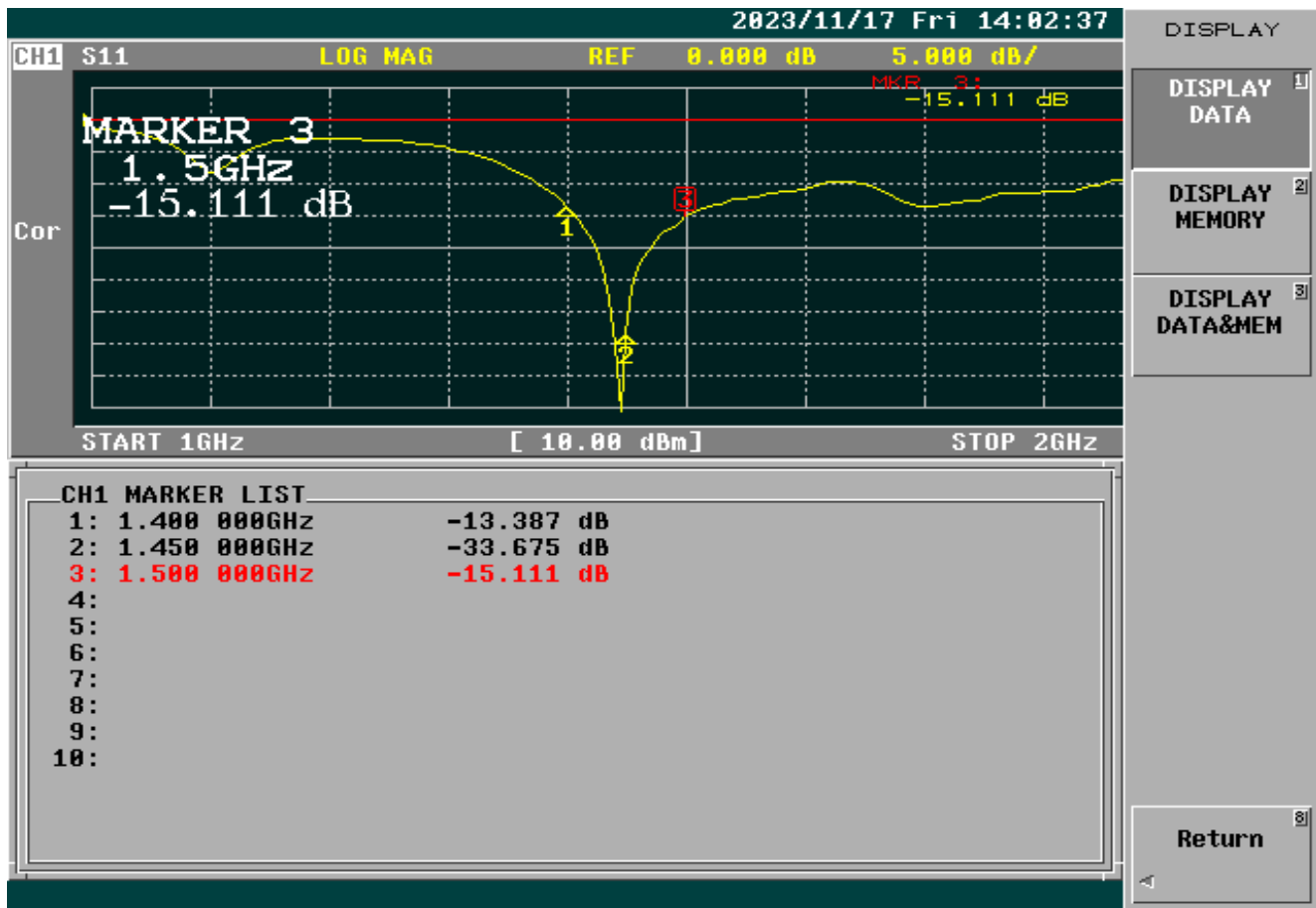
Parameter	Description
Antenna Type	External Antenna
Touch Type	Screw Type
Connector Type	TNC(Male)
Antenna Dimensions	295mm
Antenna Color	Black
Operating Temperature Range	-40°C~+85°C
Storage Temperature Range	-40°C~+85°C

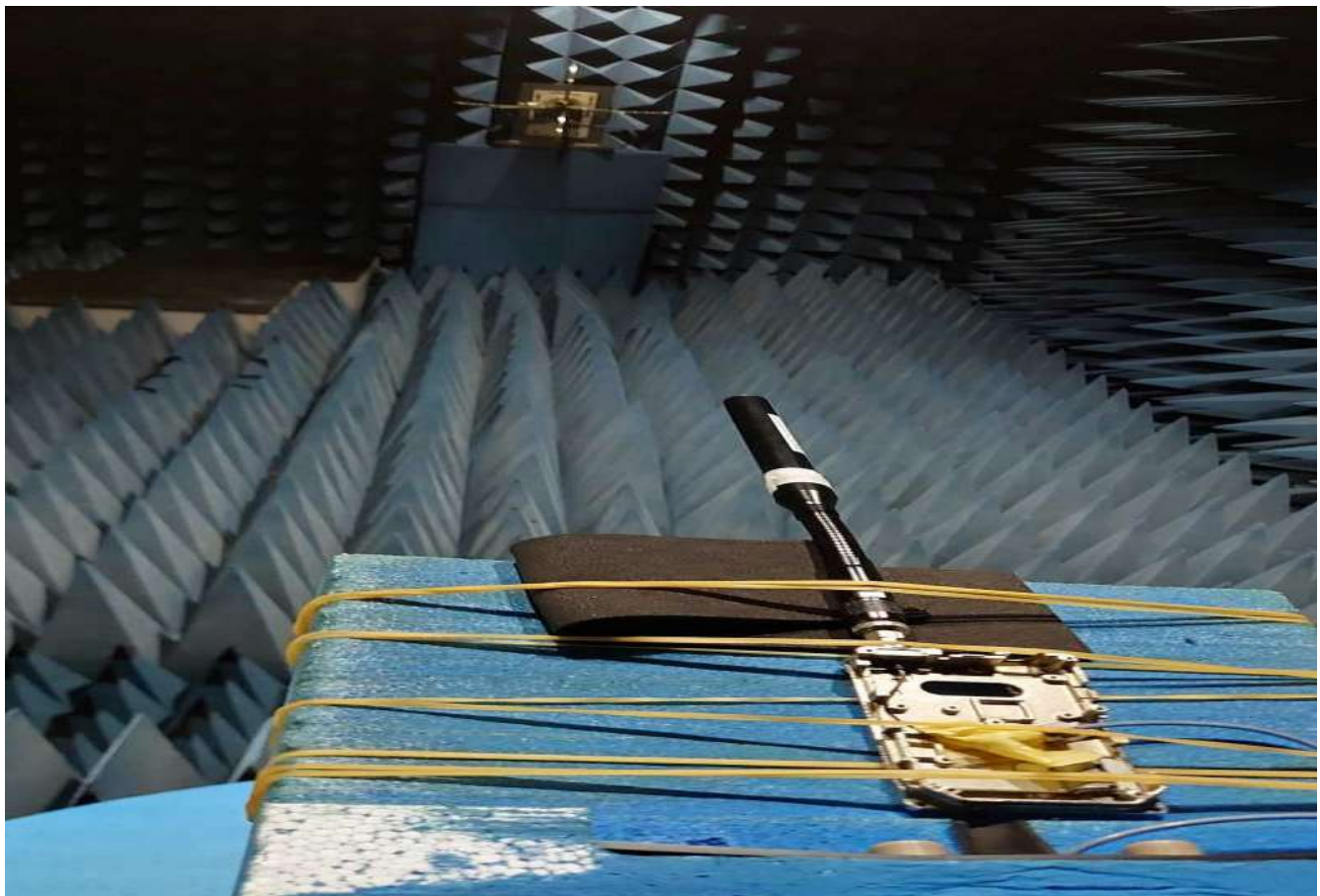
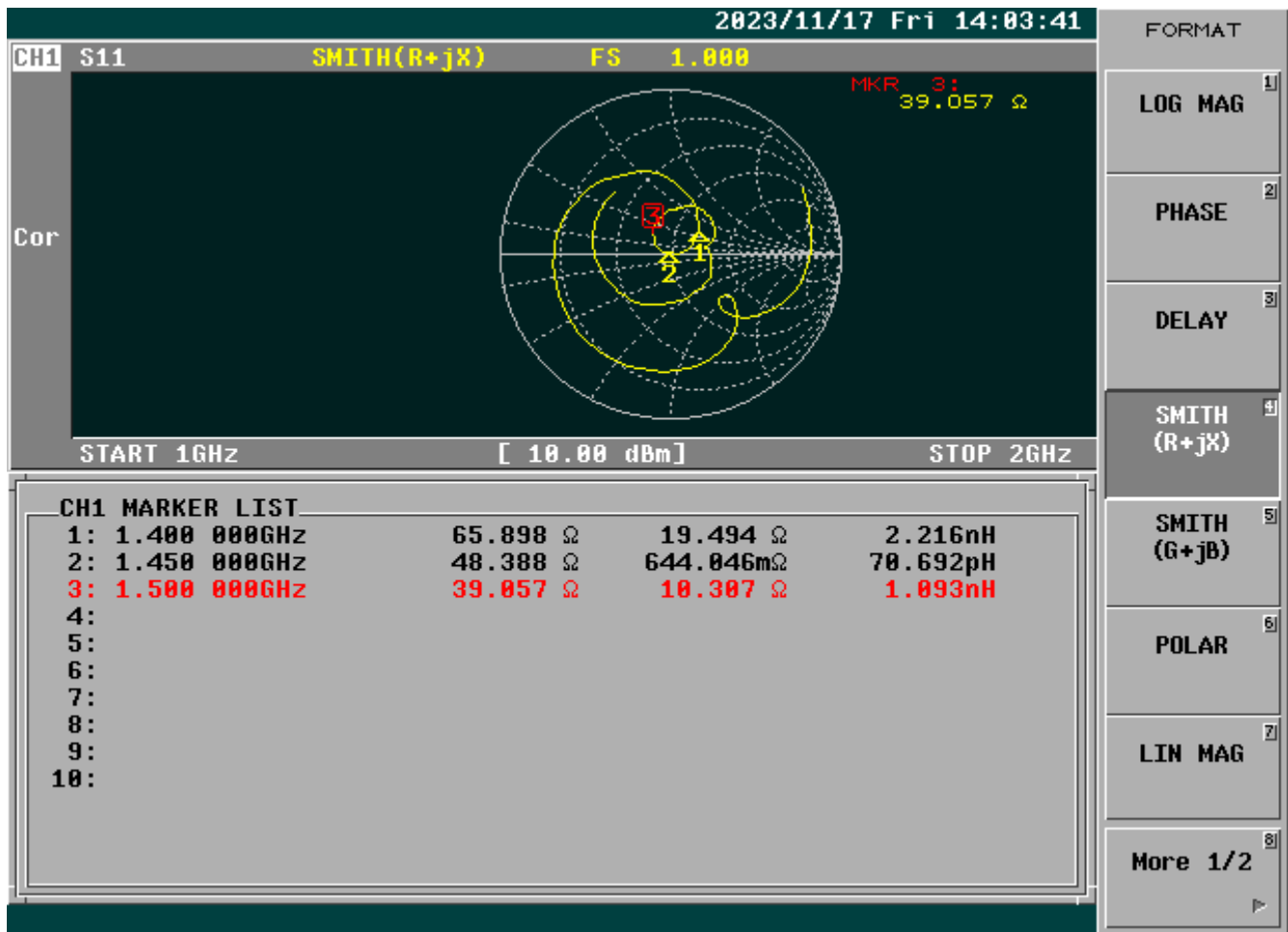
2. Appearance



3. Frequency



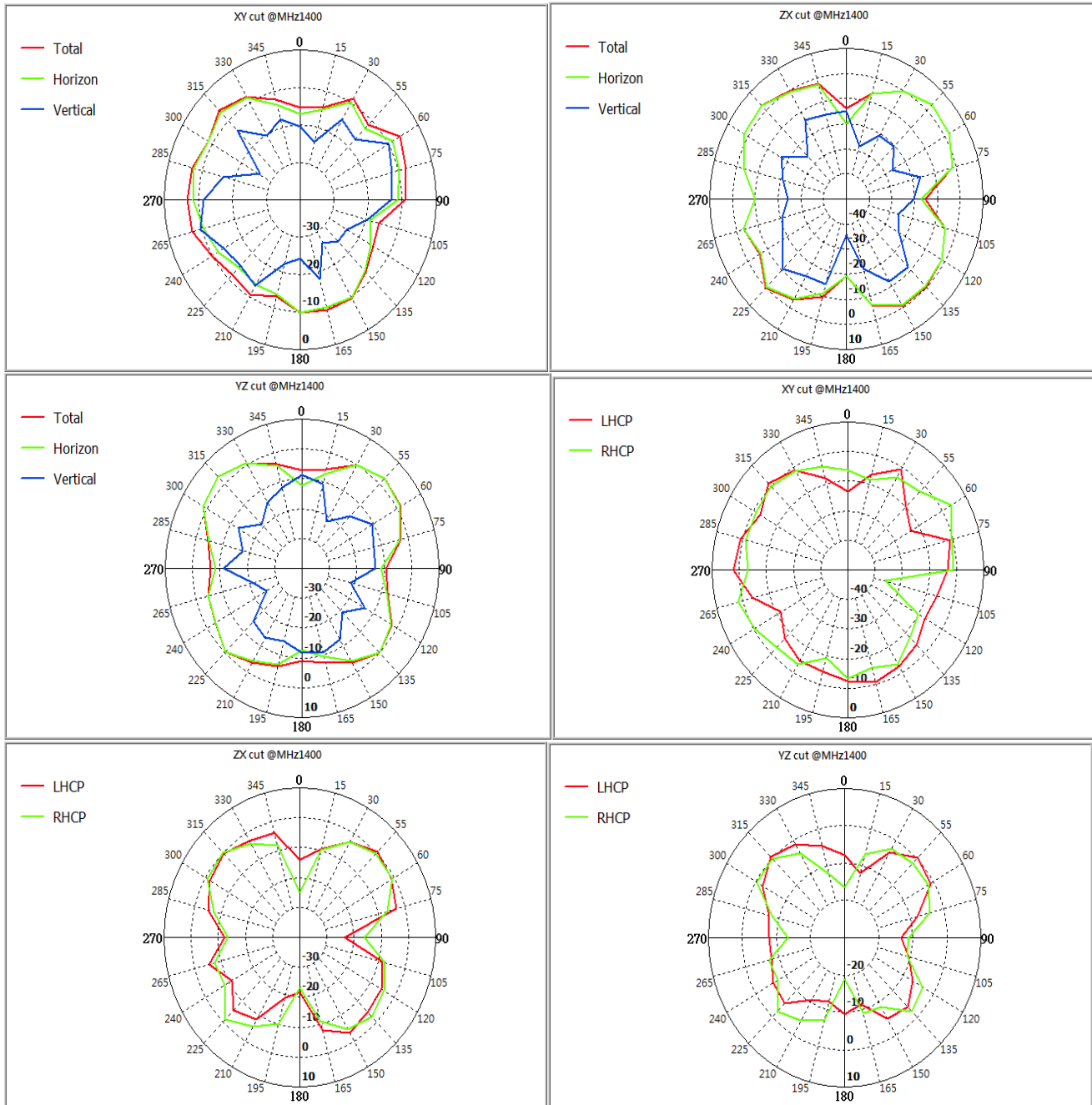


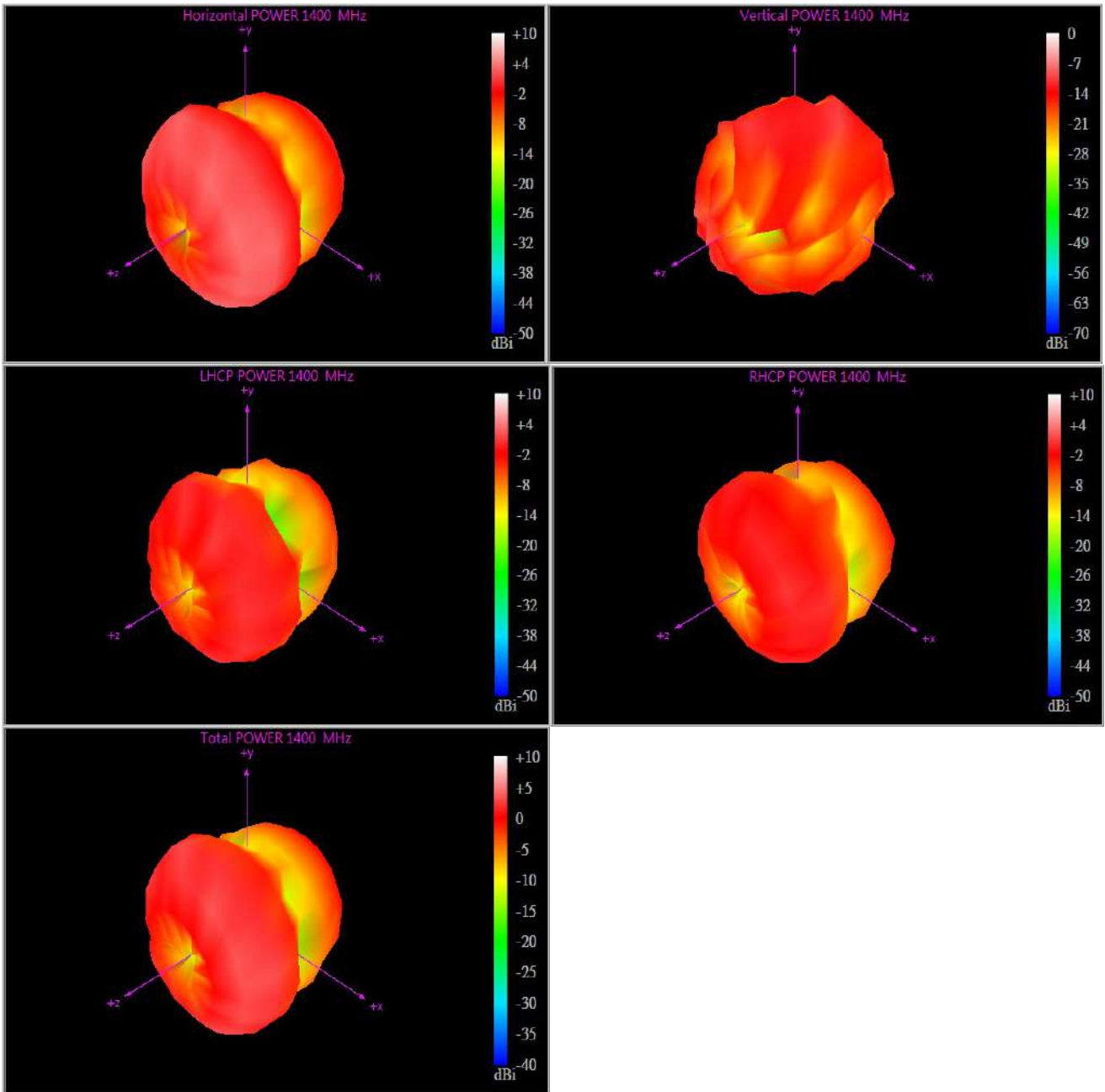


3D Total

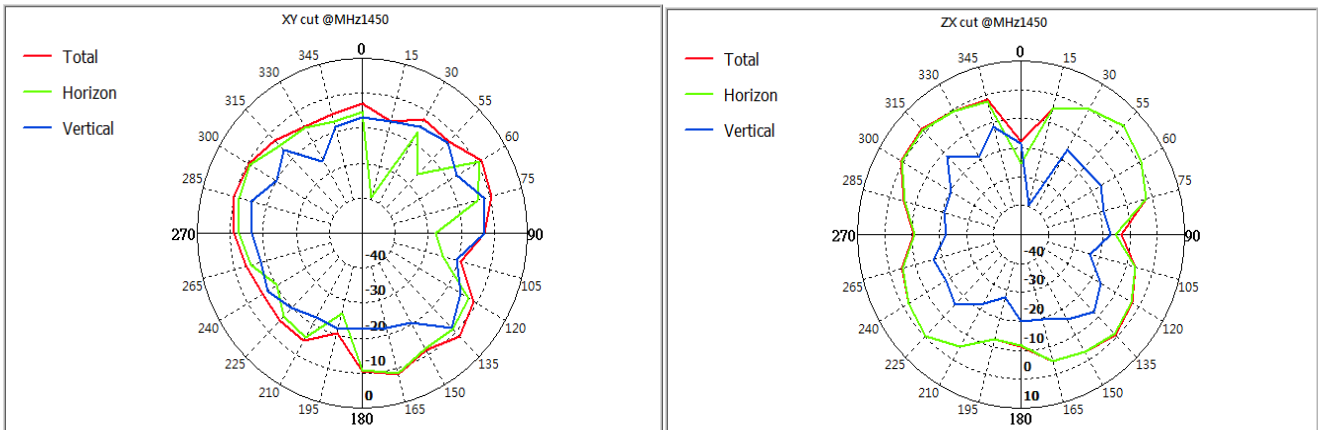
Frequency (MHz)	Upper Hem. PRP (dBm)	Lower HEM. PRP (dBm)	Efficiency (dB)	Efficiency (%)	Gain (dBi)	Tot. Rad.Pwr. (dBm)
1400 MHz	-3.16	-6.65	-1.56	61.90	2.51	-1.56
1450 MHz	-3.90	-6.91	-2.14	69.09	2.87	-2.14
1500 MHz	-4.49	-7.01	-2.56	65.44	2.68	-2.56

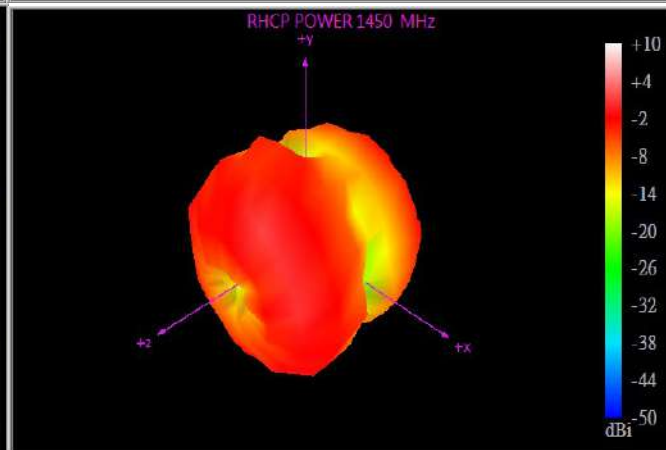
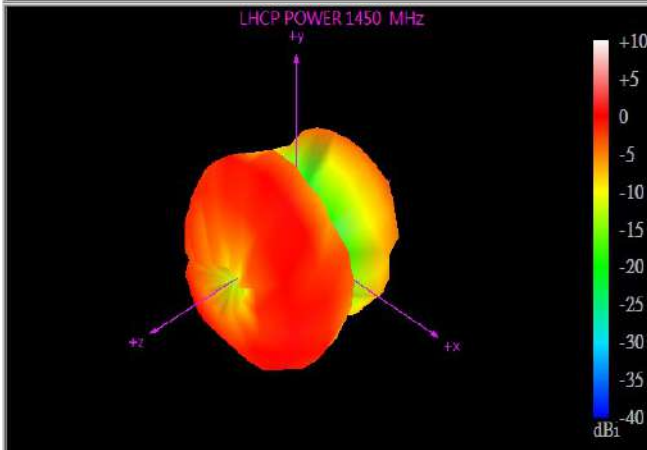
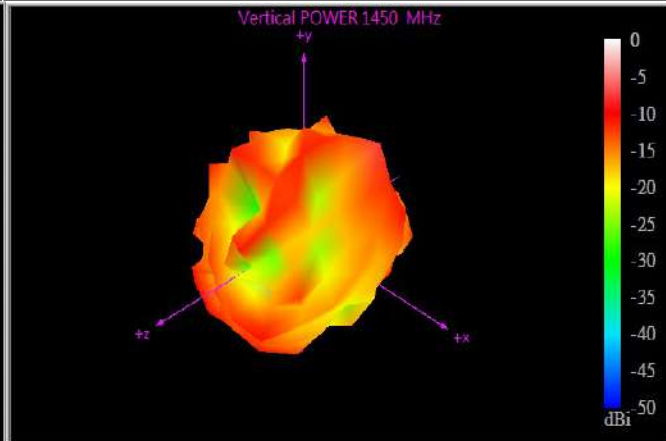
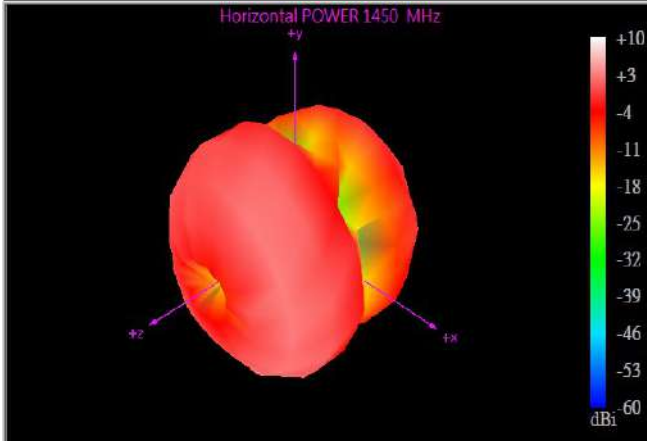
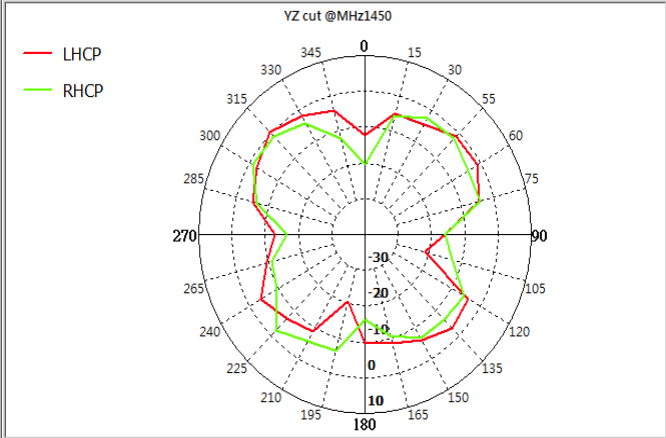
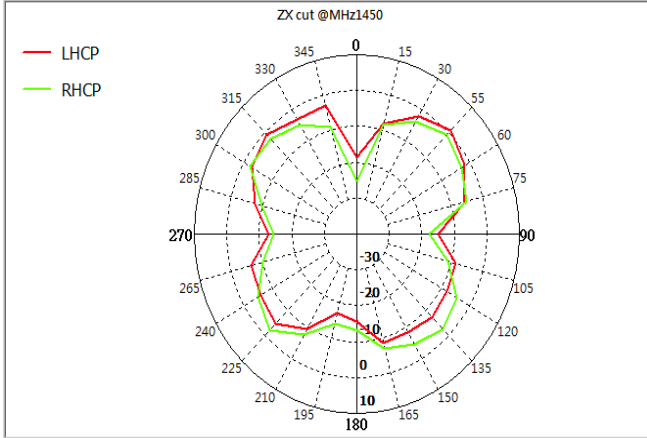
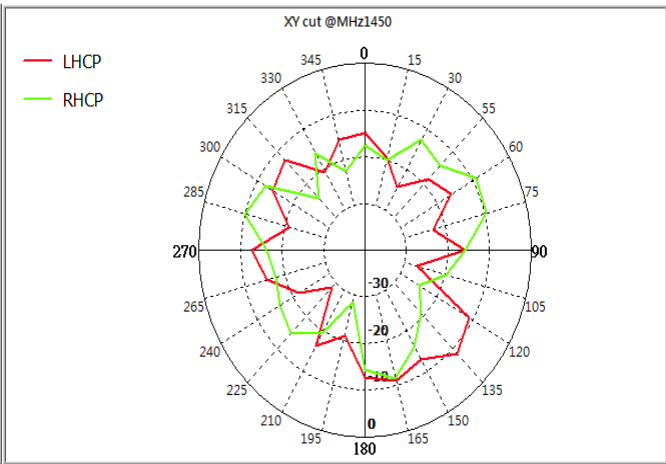
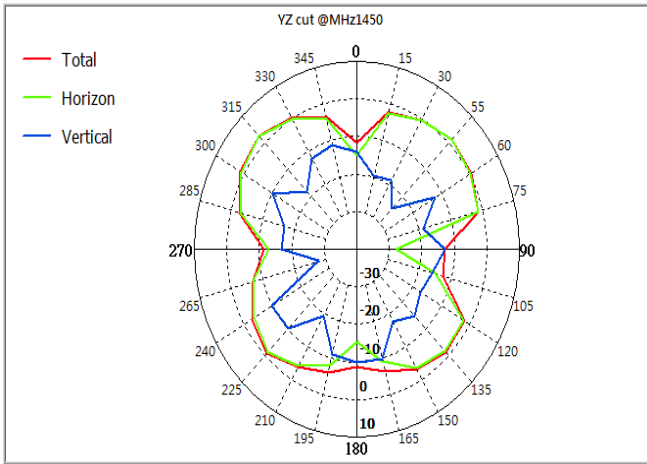
1400Mhz:

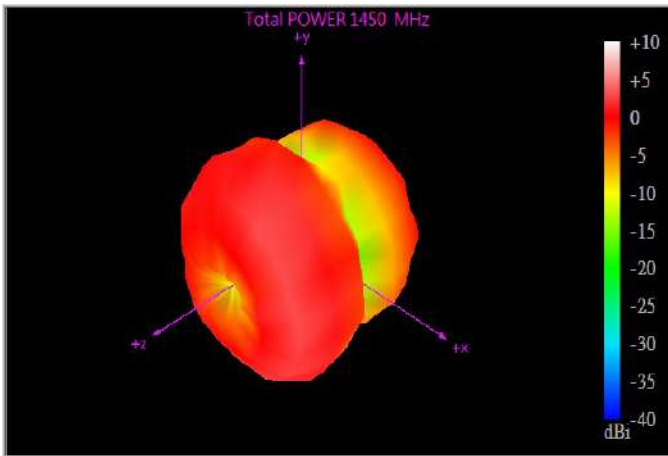




1450Mhz:







1500MHz:

