

L Band Gooseneck Antenna

MODEL: TH-1450E-TNC(M)



1. GENERAL DESCRIPTION

Model No	P/N
TH-1450E	TH1450E-TNC(M)

Below is a table summarizing the antenna design specification.

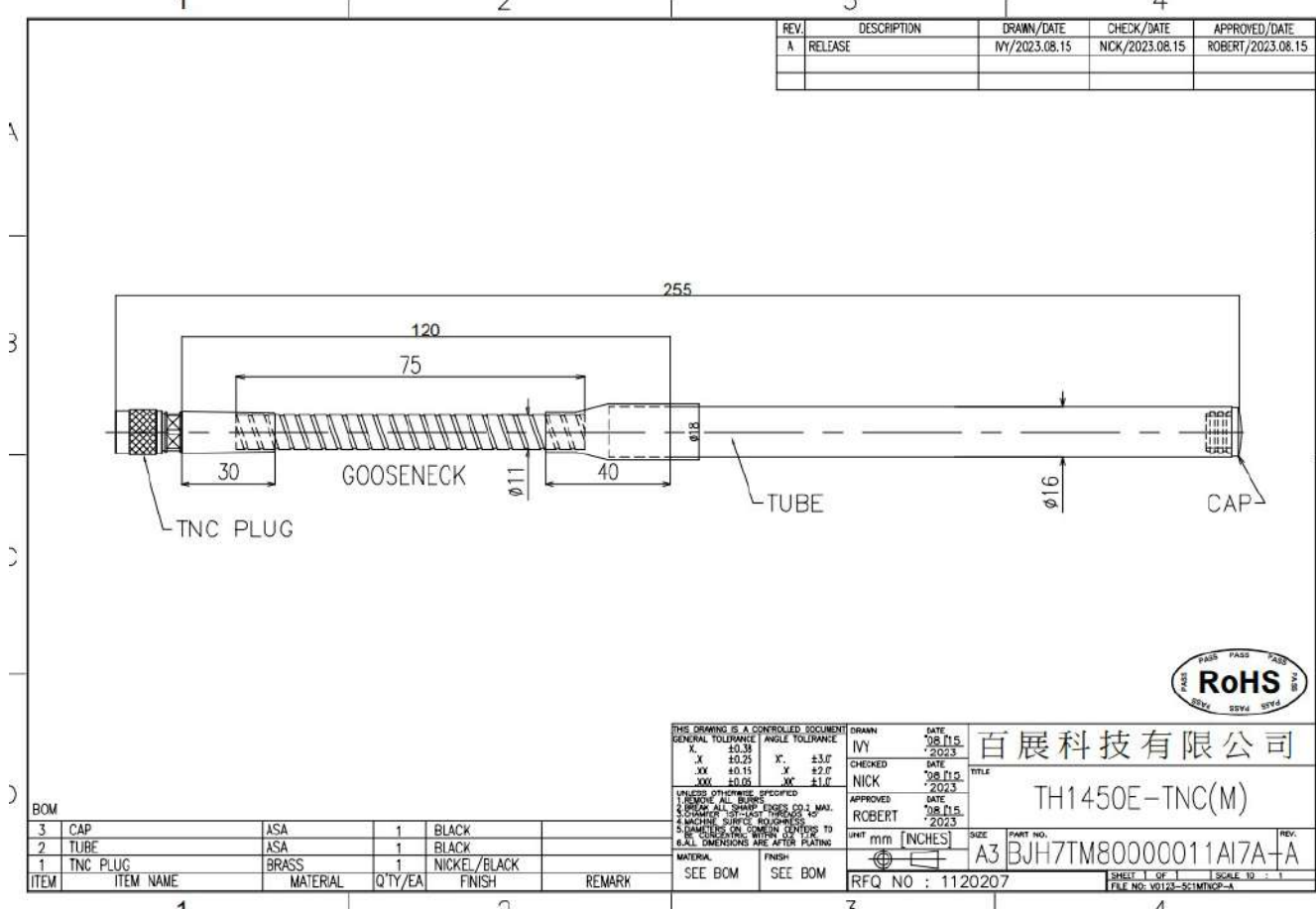
1.1 Electrical Properties

Parameter	Description
Frequency Band	1400~1500MHz ON GND
Nominal Impedance	50 ohm
Polarization	Vertical
Electrical Wave	Dipole
Return Loss	Please See Data-1
V.S.W.R	2.0 : 1
Gain	2.5db

1.2 Mechanical Properties

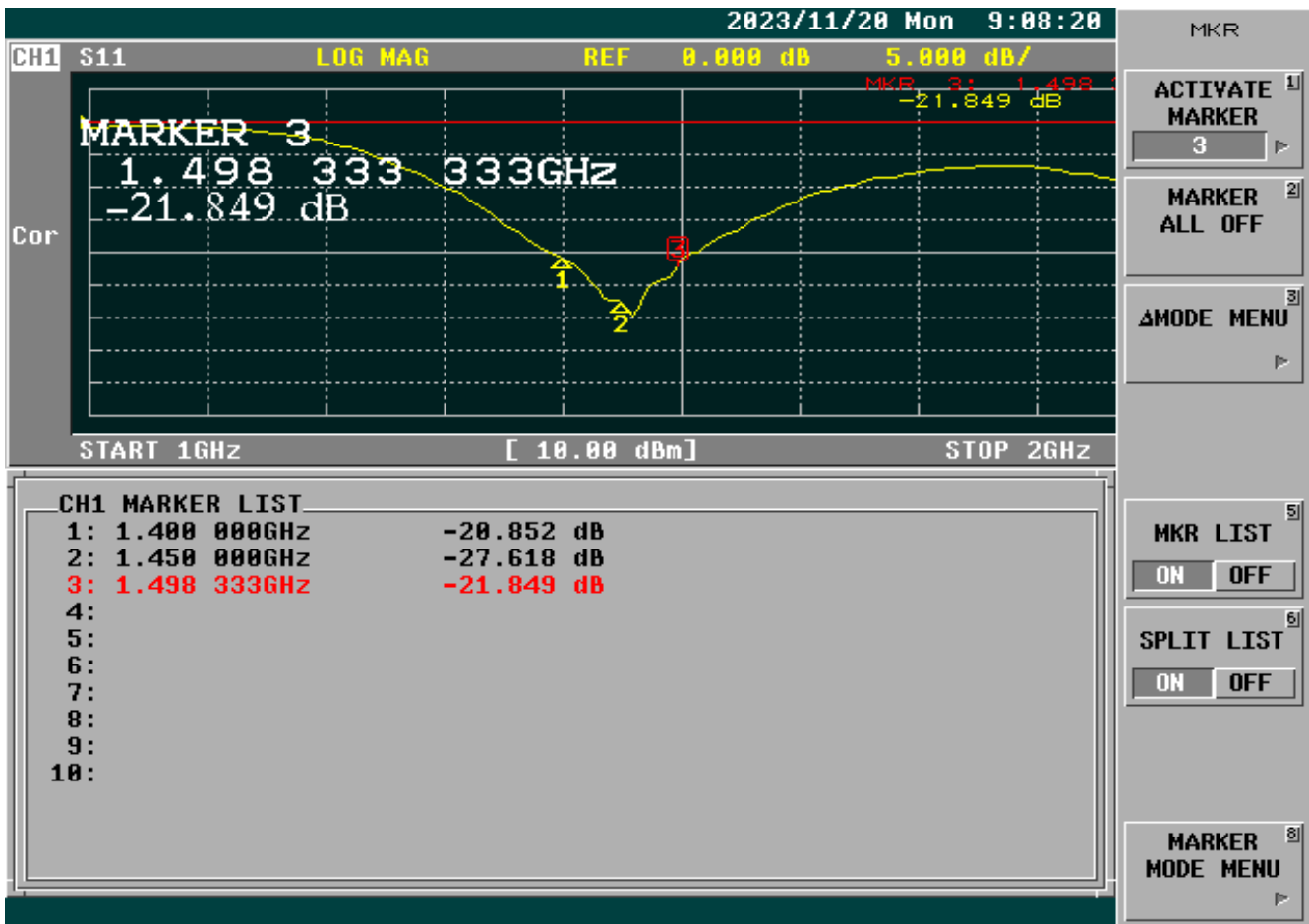
Parameter	Description
Antenna Type	External Antenna
Touch Type	Screw Type
Connector Type	TNC(Male)
Antenna Dimensions	255mm \pm 15
Antenna Color	Black
Operating Temperature Range	-40°C~+85°C
Storage Temperature Range	-40°C~+85°C

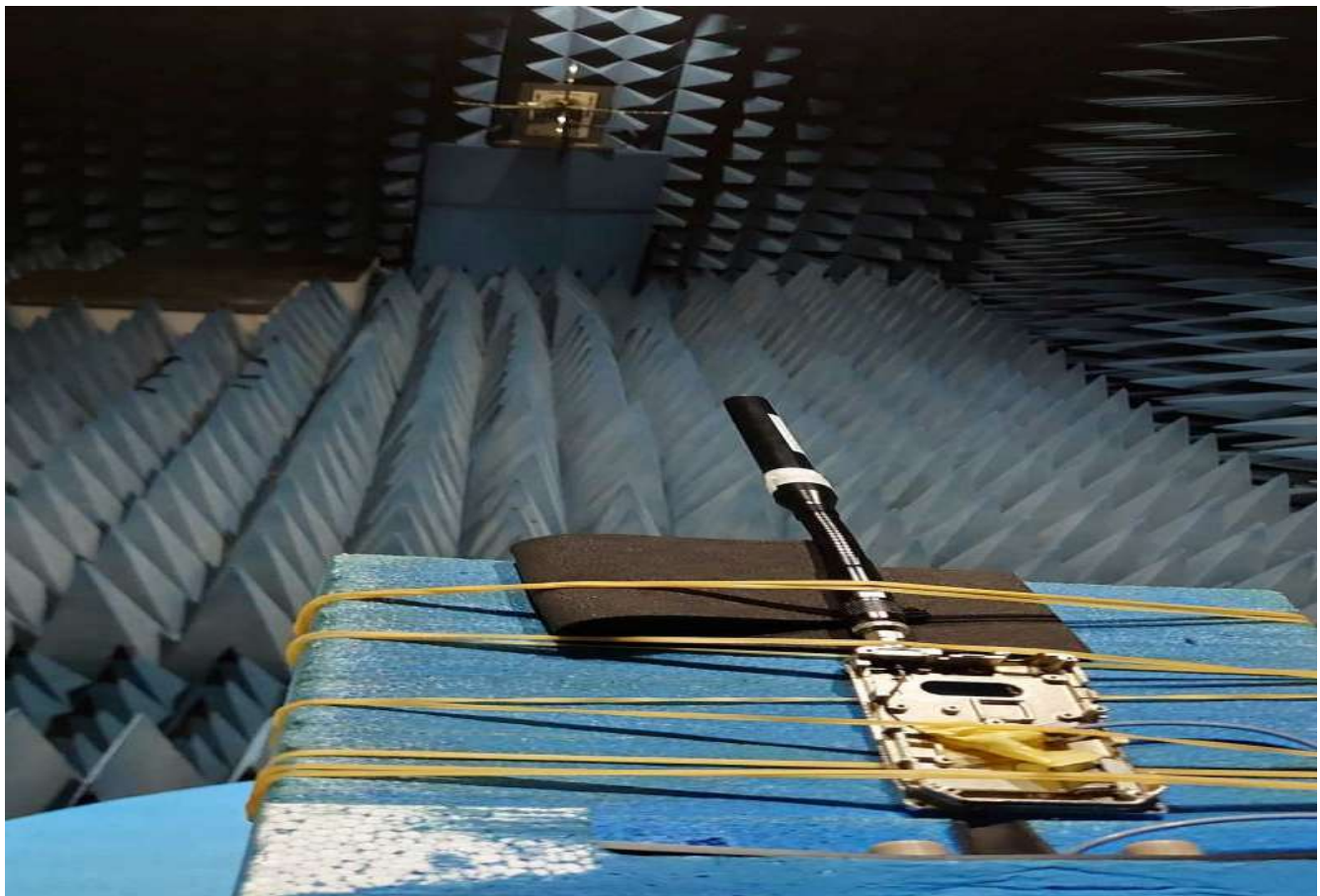
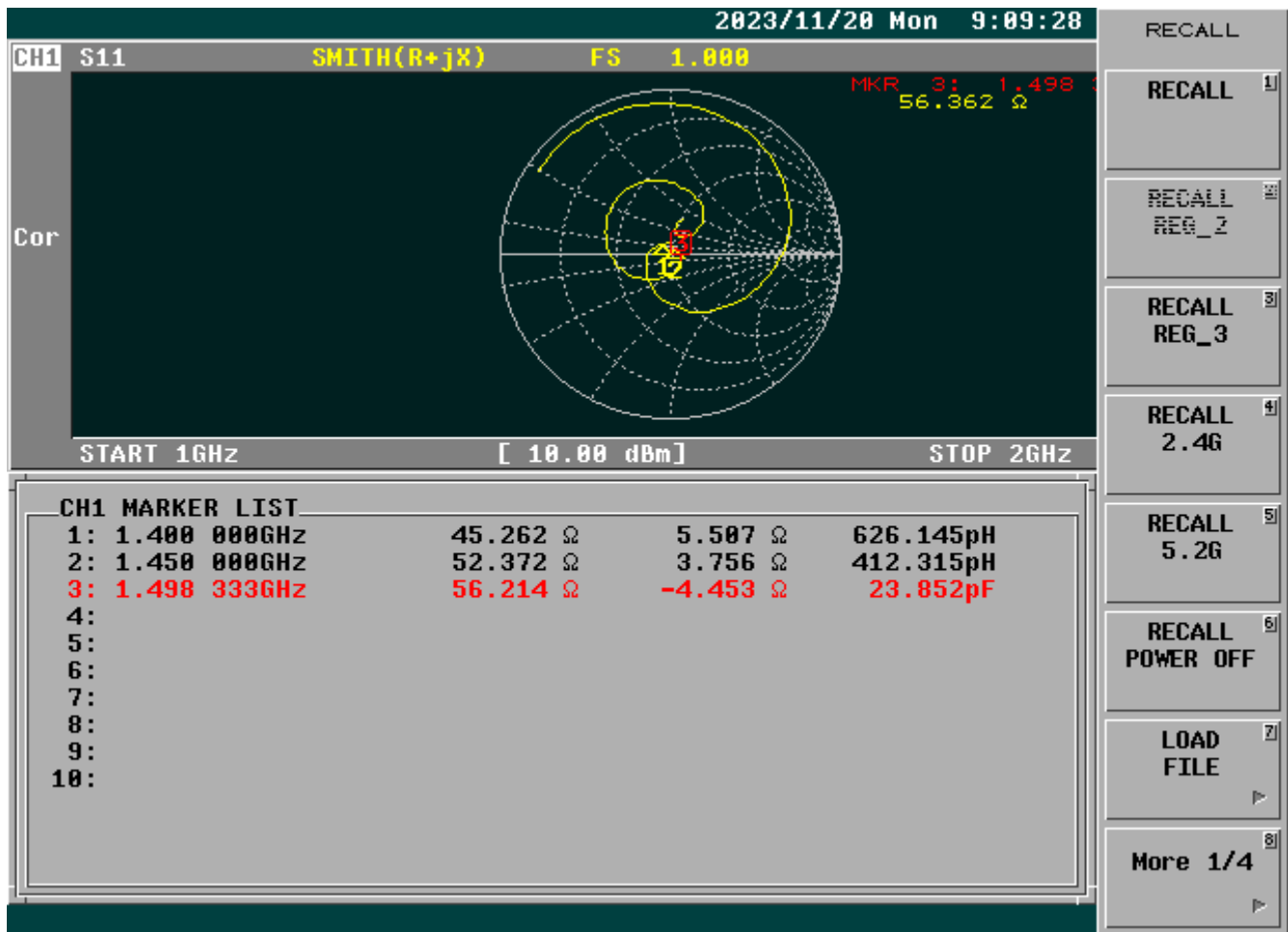
2. Appearance



3. Frequency



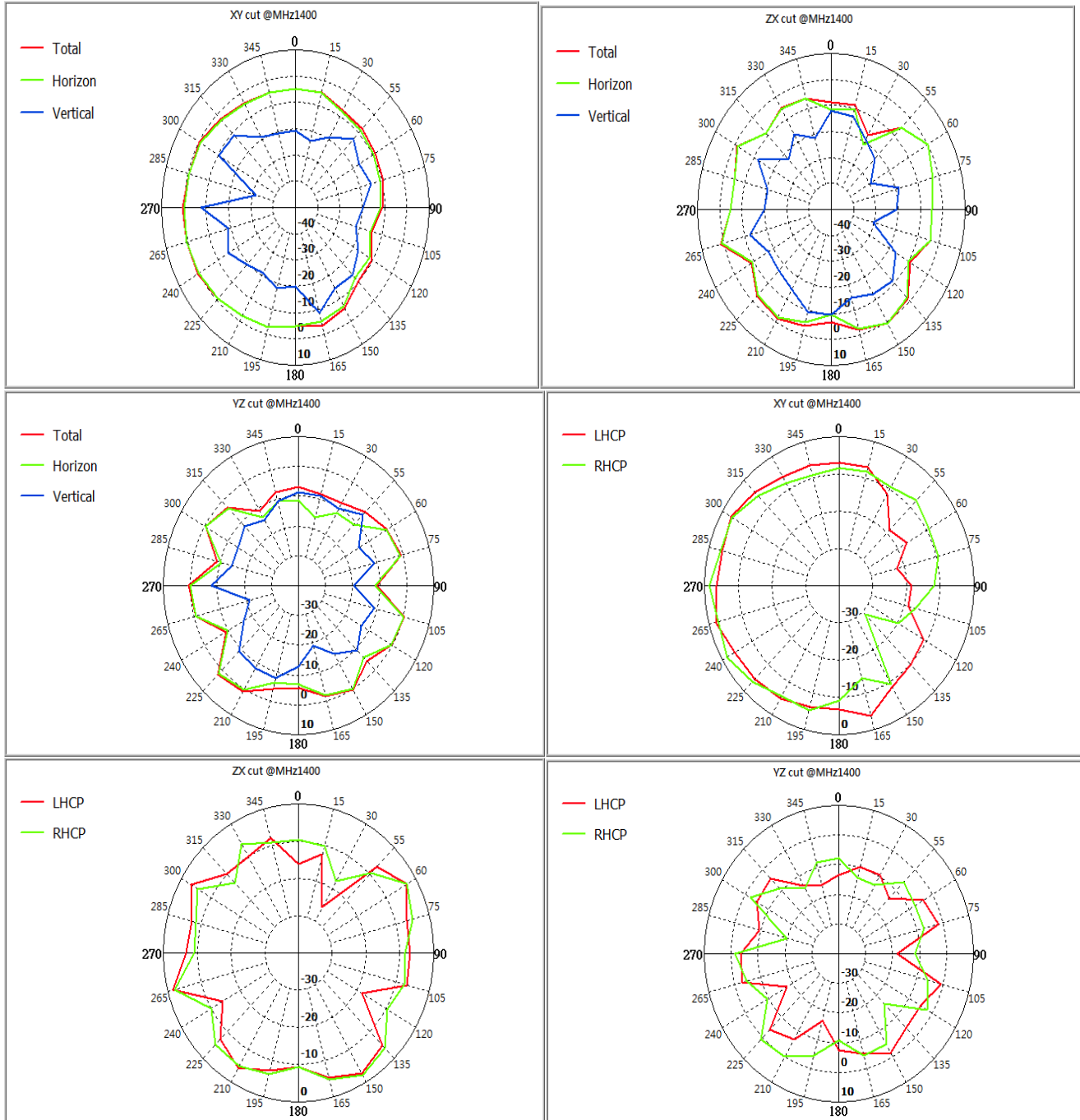


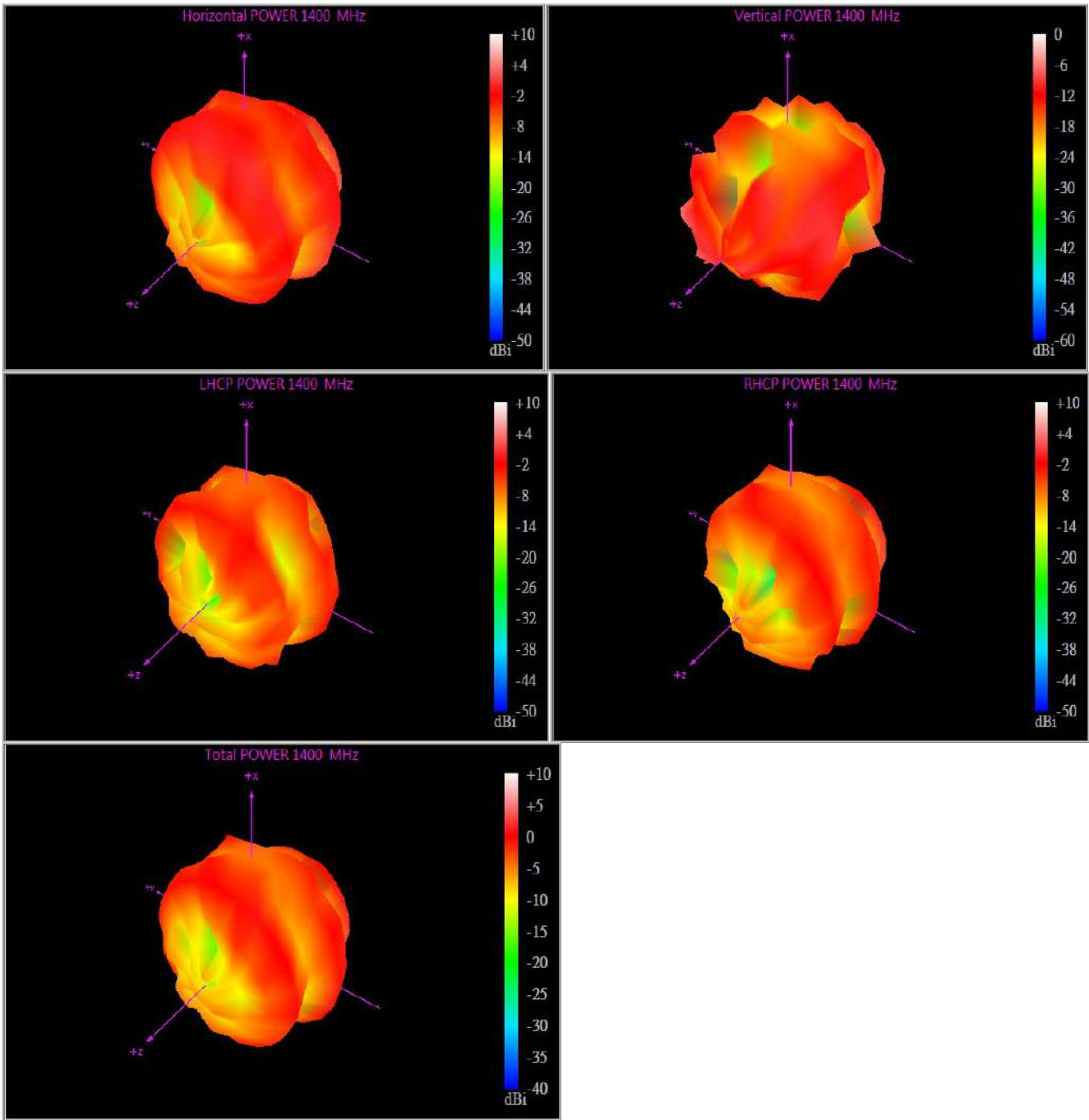


3D Total

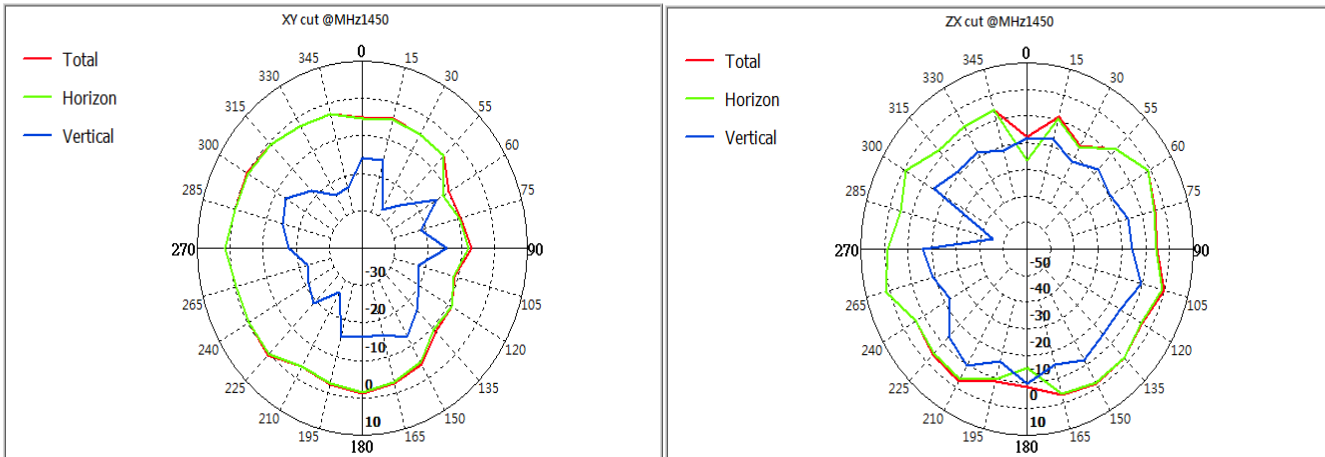
Frequency (MHz)	Upper Hem. PRP (dBm)	Lower HEM. PRP (dBm)	Efficiency (dB)	Efficiency (%)	Gain (dBi)	Tot. Rad.Pwr. (dBm)
1400 MHz	-6.77	-5.18	-2.89	51.39	2.53	-2.89
1450 MHz	-7.40	-5.85	-3.54	54.23	2.65	-2.54
1500MHz	-8.20	-3.99	-2.59	55.04	2.63	-2.59

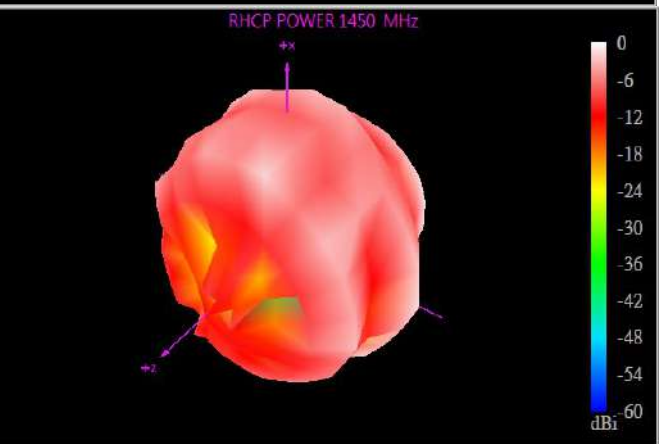
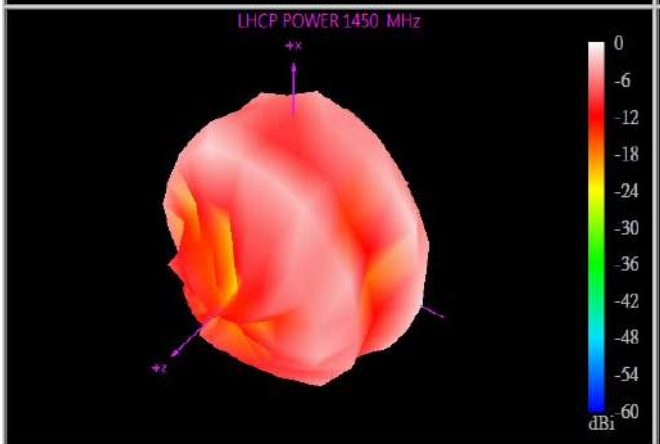
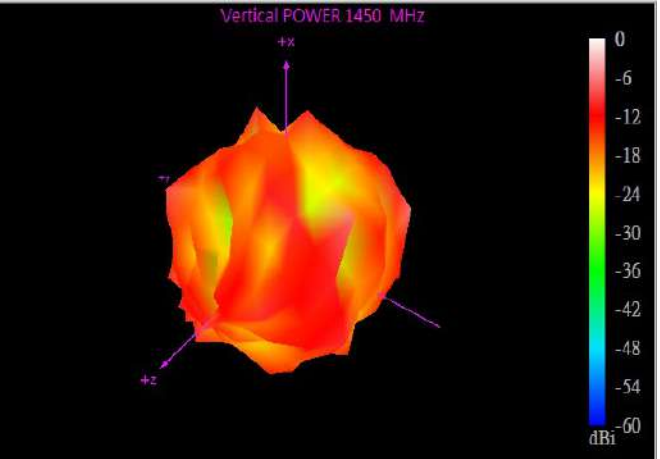
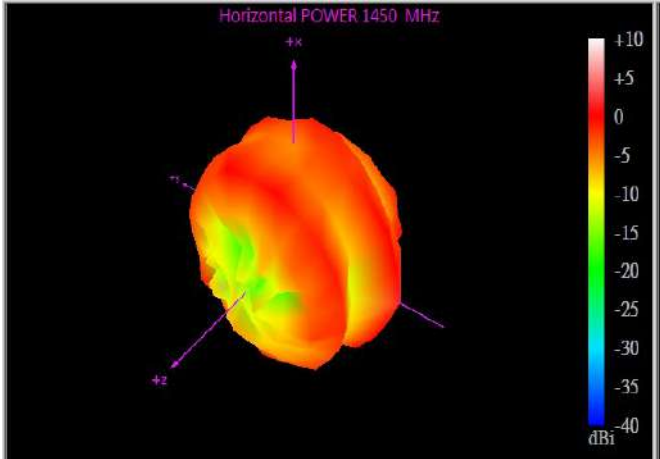
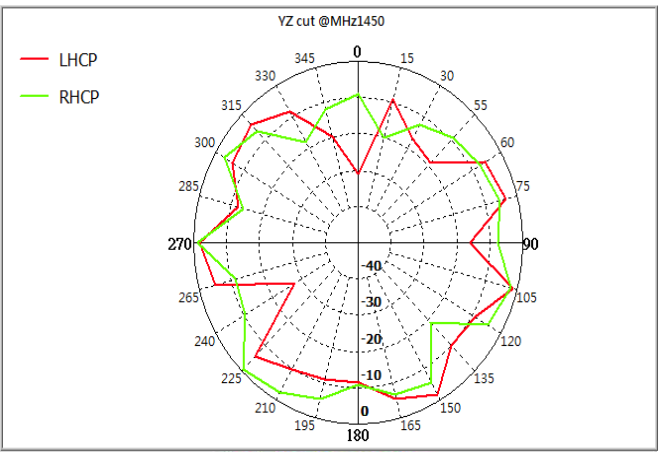
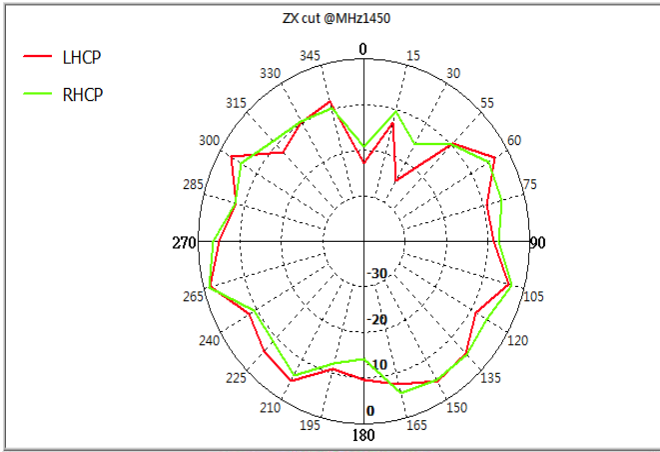
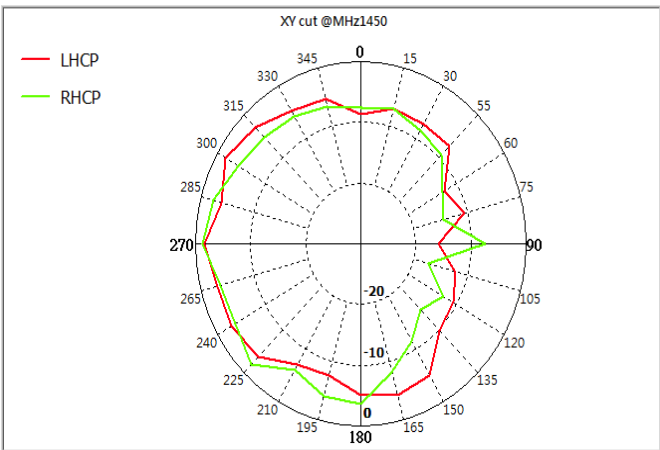
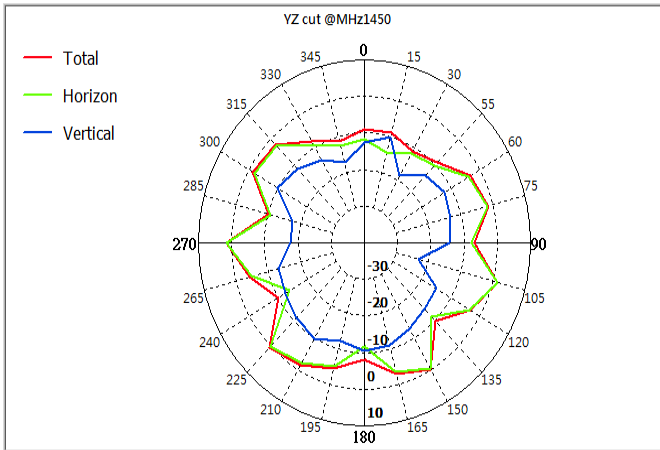
1400Mhz:

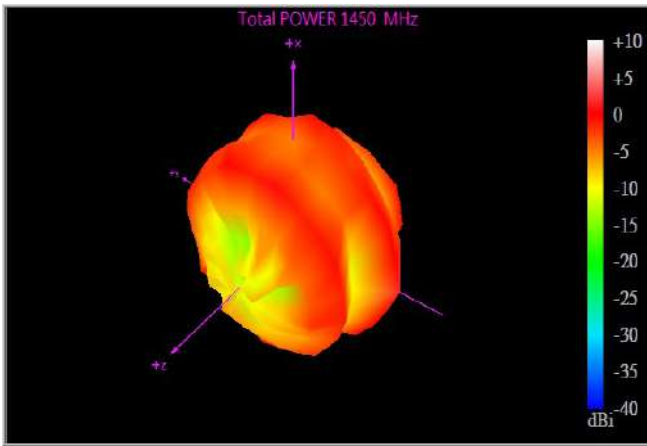




1450Mhz:







1500Mhz:

