

2.4G ANTENNA

MODEL: TH-241A-SMA(M)



1. GENERAL DESCRIPTION

Model No
TH241A-SMA(M)

Below is a table summarizing the antenna design specification.

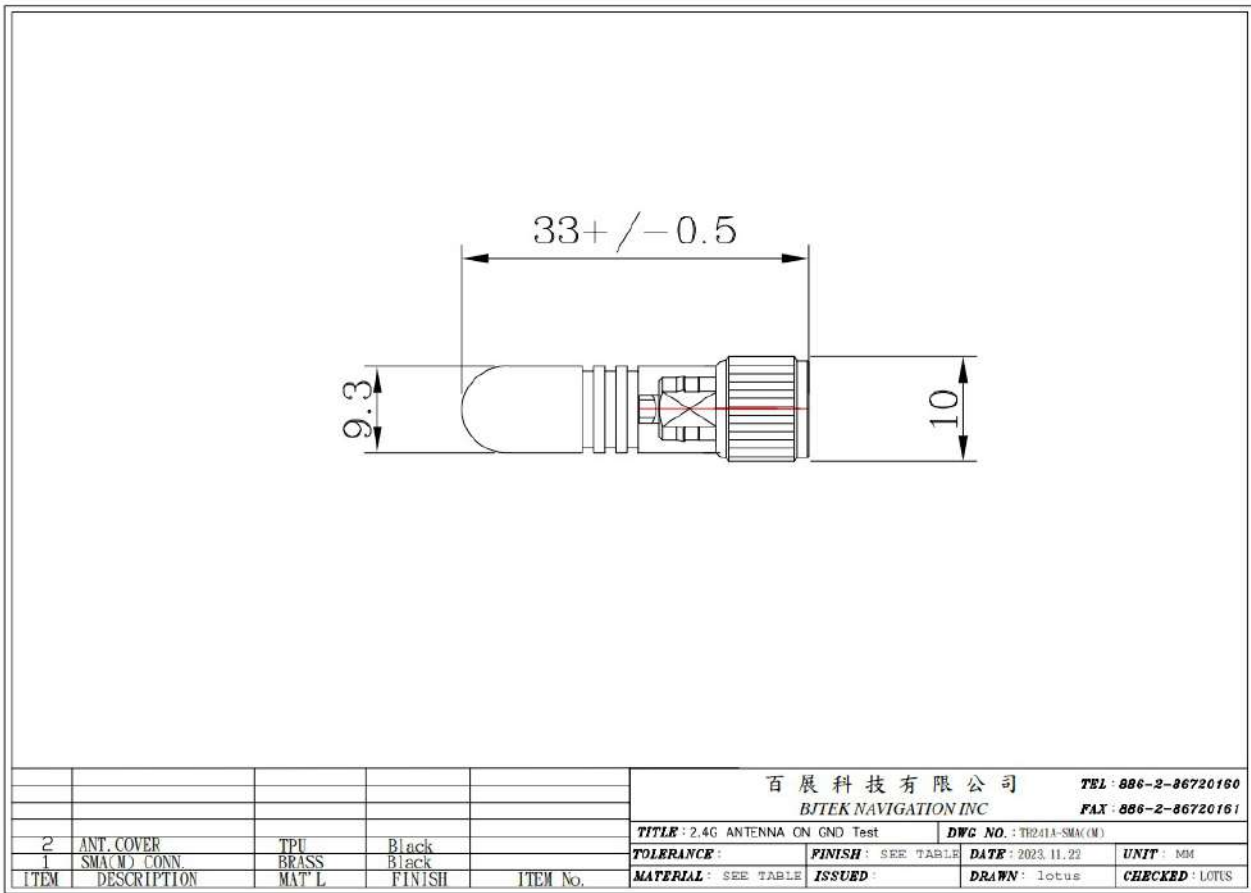
1.1 Electrical Properties

Parameter	Description
Frequency Band	2.4~2.5GHz ON GND
Nominal Impedance	50 ohm
Polarization	Vertical
Return Loss	Please See Data-1
V.S.W.R	2.0 : 1

1.2 Mechanical Properties

Parameter	Description
Antenna Type	External Antenna
Antenna Material	TPU
Touch Type	Screw Type
Connector Type	SMA(Male)
Antenna Dimensions	Φ9.3 x 33mm +/-0.5
Antenna Color	Black
Operating Temperature Range	-30°C~+80°C
Storage Temperature Range	-30°C~+80°C

2. Appearance



3. Frequency : Free space test :



