

ADS-B Antenna

MODEL: TH80-1090-SMA90(M)



1. GENERAL DESCRIPTION

Model No
TH80-1090-SMA90(M)

Below is a table summarizing the antenna design specification.

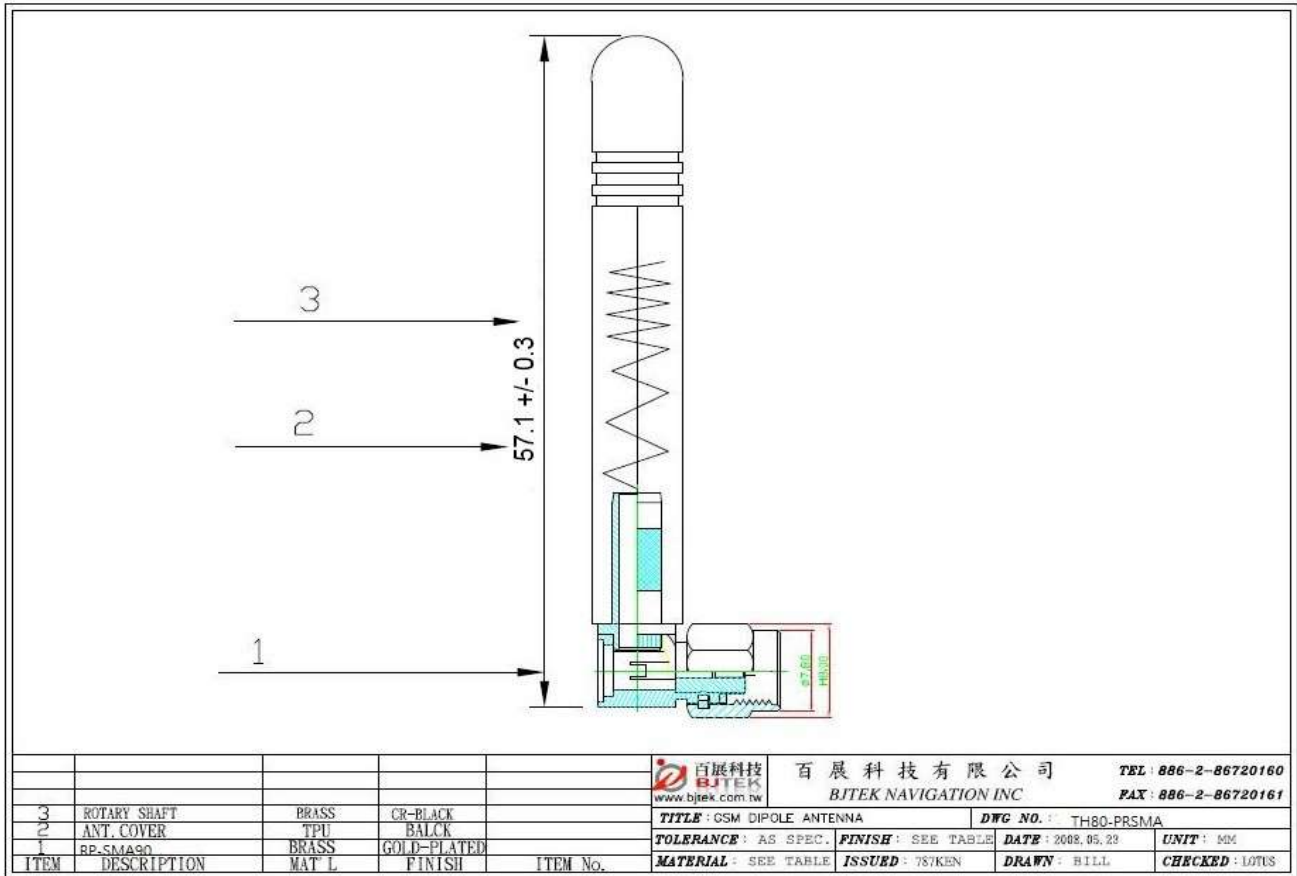
1.1 Electrical Properties

Parameter	Description
Frequency Band	1080~1100MHz ON 64x100mm GND TEST
Nominal Impedance	50 ohm
Polarization	Vertical
Return Loss	Please See Data-1
V.S.W.R	2.0 : 1
Gain	1db
Note: Gain includes the cable loss	

1.2 Mechanical Properties

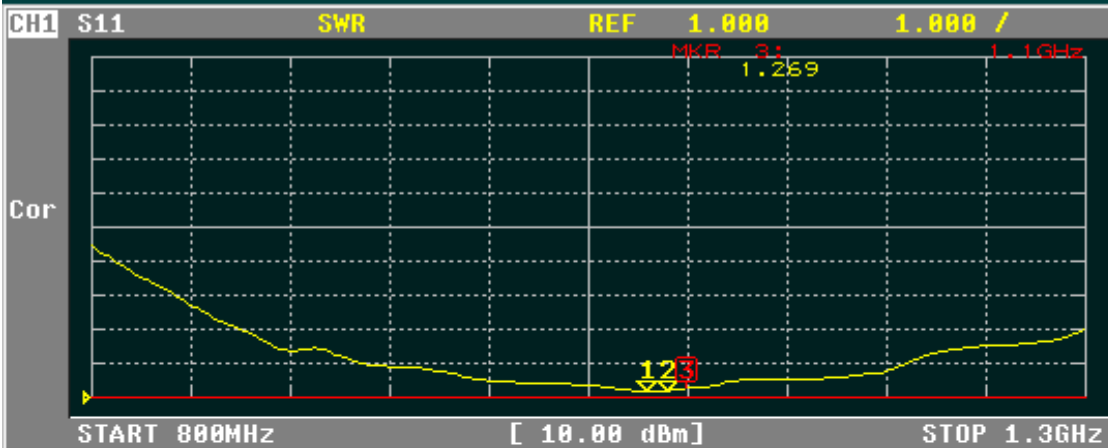
Parameter	Description
Antenna Type	External Antenna
Antenna Material	TPU
Touch Type	Screw Type
Connector Type	SMA 90° (Male)
Antenna Dimensions	57.1mm ±0.3
Antenna Color	Black
Operating Temperature Range	-40°C~+85°C
Storage Temperature Range	-40°C~+85°C

2. Appearance



3. Frequency





CH1 MARKER LIST

1:	1.000 000GHz	1.178
2:	1.090 000GHz	1.186
3:	1.100 000GHz	1.269
4:		
5:		
6:		
7:		
8:		
9:		
10:		

FORMAT

SWR

REAL

IMAG

PHASE

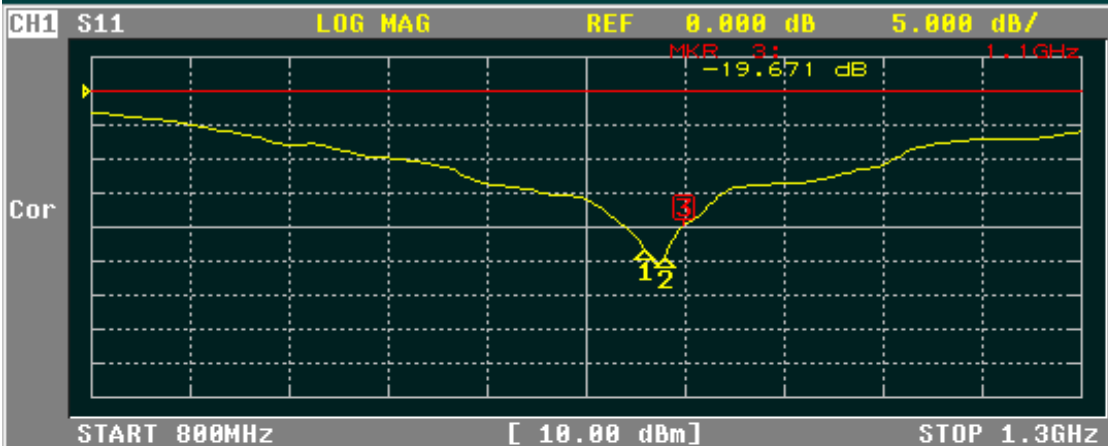
-∞, +∞

LOG MAG & PHASE

LOG MAG & DELAY

LIN MAG & PHASE

More 2/2



CH1 MARKER LIST

1:	1.000 000GHz	-23.124 dB
2:	1.090 000GHz	-24.244 dB
3:	1.100 000GHz	-19.671 dB
4:		
5:		
6:		
7:		
8:		
9:		
10:		

FORMAT

LOG MAG

PHASE

DELAY

SMITH (R+jX)

SMITH (G+jB)

POLAR

LIN MAG

More 1/2

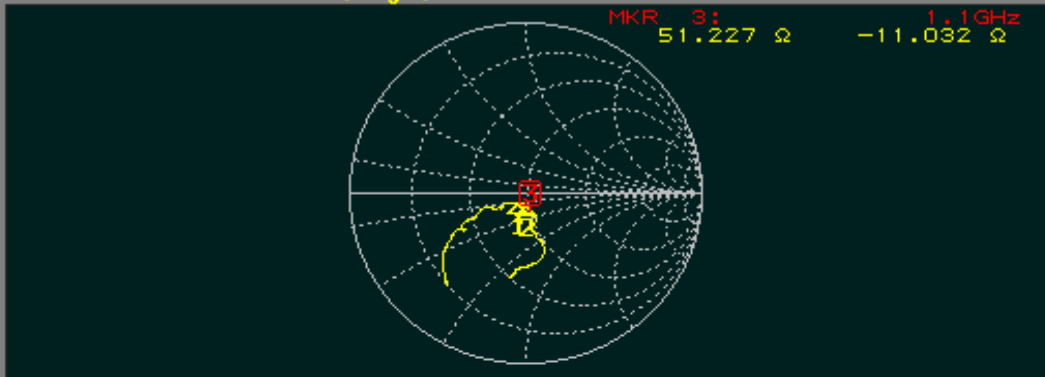
CH1 S11

SMITH(R+jX)

FS 1.000

MKR 3: 1.1GHz
51.227 Ω -11.032 Ω

Cor



START 800MHz

[10.00 dBm]

STOP 1.3GHz

CH1 MARKER LIST

1:	1.000 000GHz	45.109 Ω	-4.808 Ω	30.648pF
2:	1.090 000GHz	49.746 Ω	-6.590 Ω	22.154pF
3:	1.100 000GHz	51.222 Ω	-11.008 Ω	13.143pF
4:				
5:				
6:				
7:				
8:				
9:				
10:				

FORMAT

LOG MAG 1

PHASE 2

DELAY 3

SMITH (R+jX) 4

SMITH (G+jB) 5

POLAR 6

LIN MAG 7

More 1/2 8