

# S-BAND Passive Antenna

## MODEL: GA-2250-SMA(F)



The antenna operates at S band with high performance which makes it suitable Telemetry application. A wide beam width ensures satellite communication from low elevation angles. The S band antenna can easily mounted using the screw mounting and protected using rugged ASA-UV plastic radome & IPX7.

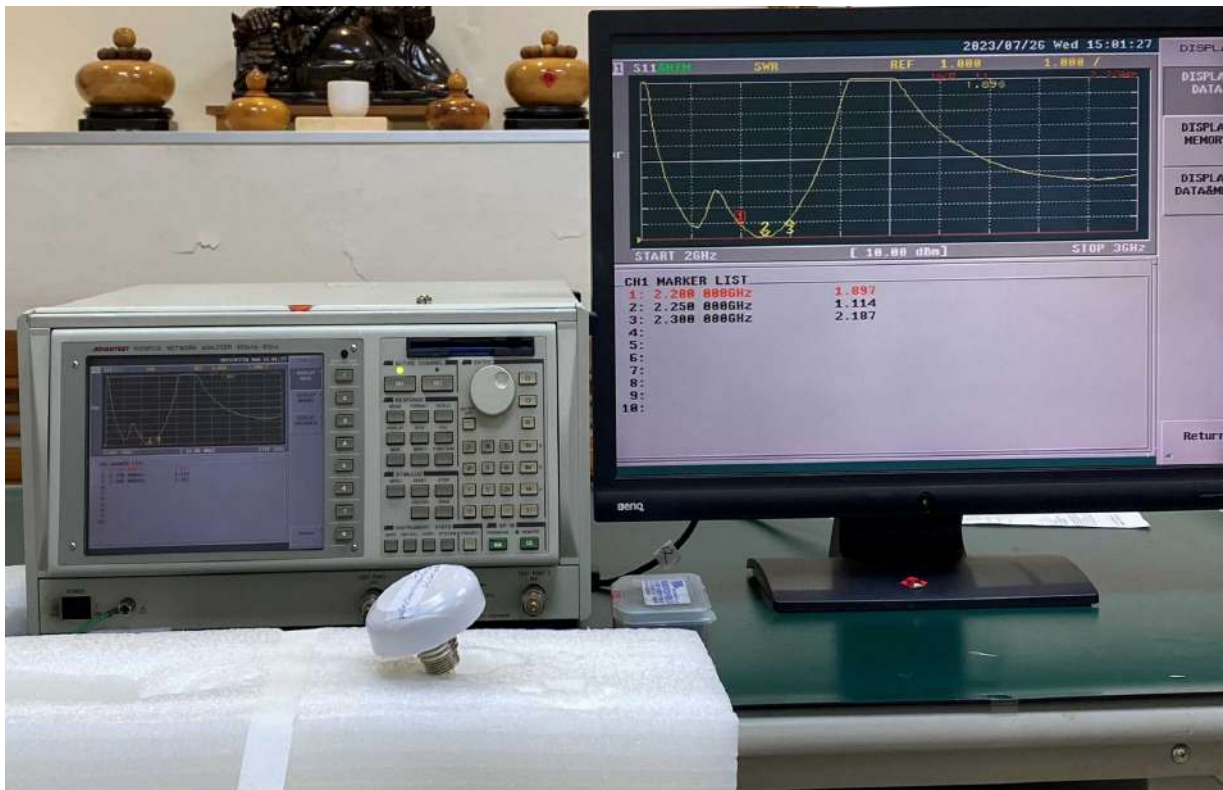
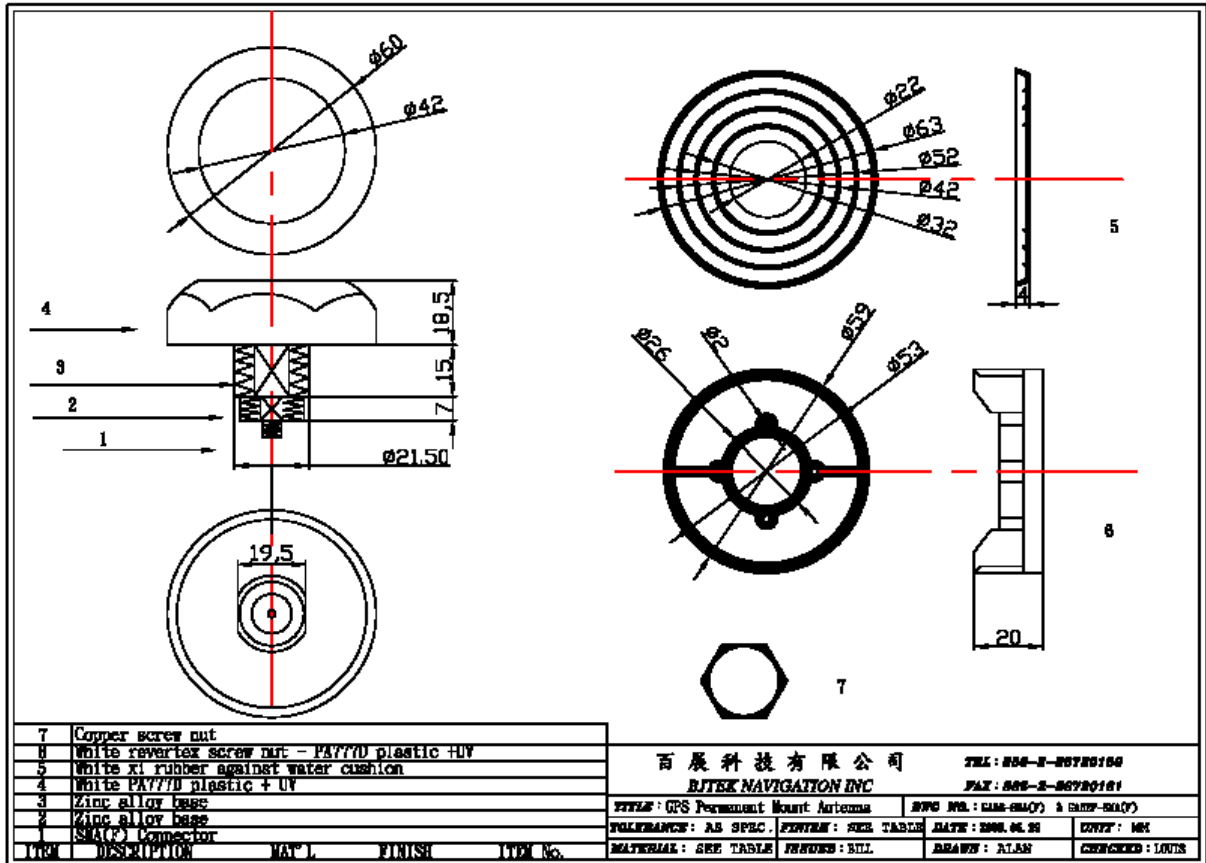
### Specifications:

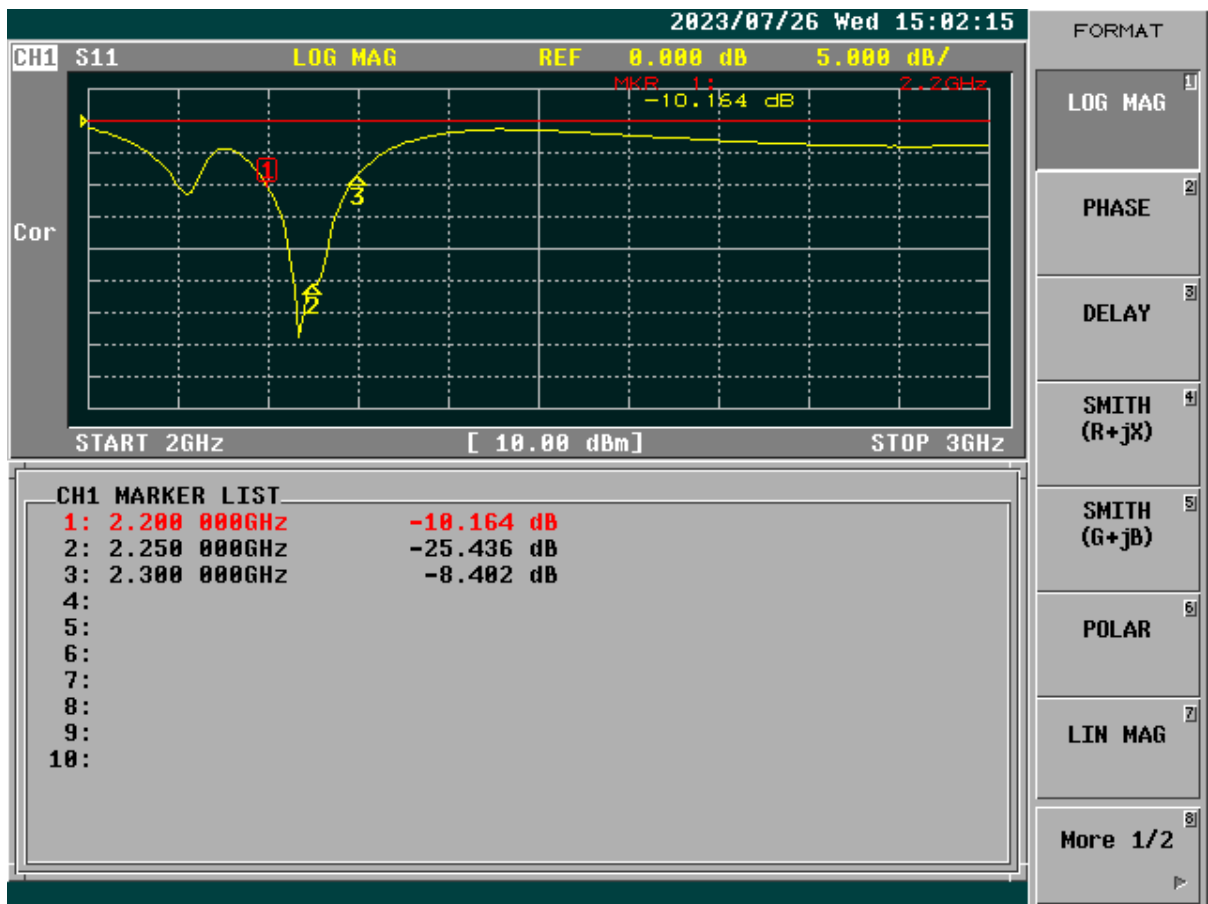
PHYSICAL CONDITION	
Constructions:	ASA radome
Dimensions:	60mm(Dia.) x 18.5mm(H)
Weight:	65grams (w/o cable & connector).
Color:	White-UV
Mounting:	Bulkhead mount with 0.8 inch threaded wing nut (standard accessory).
Cable & Connector	
RF cable:	SMA(M) +CFD200-3 meter +TNC(M) (standard) other length (optional)
Pulling strength:	6 Kg @ 5sec. molded plastic on connector end for strain relief.
Connector	SMA(F) or TNC(F)
Antenna Element	
Frequency:	2200~2300MHz
Polarization:	R.H.C.P. (Right Handed Circular Polarization).
Peak Gain	4dBi
Output VSWR:	3.0 max

Output Impedance:	50 ohm
<b>Environmental</b>	
Operating Temperature:	-40°C~ +85°C.
Storage Temperature:	-40°C~ +85°C.
Relative Humidity:	95% non-condensing.
Water Resistance:	100% waterproof. IPX7

\* This specification is subject to change without prior notice

Data Updated: Jul.11, 2019







CH1 MARKER LIST

1:	2.200 000GHz	34.157 Ω	-21.942 Ω	3.296pF
2:	2.250 000GHz	49.499 Ω	-5.283 Ω	13.387pF
3:	2.300 000GHz	59.105 Ω	43.977 Ω	3.043nH
4:				
5:				
6:				
7:				
8:				
9:				
10:				

FORMAT

LOG MAG

PHASE

DELAY

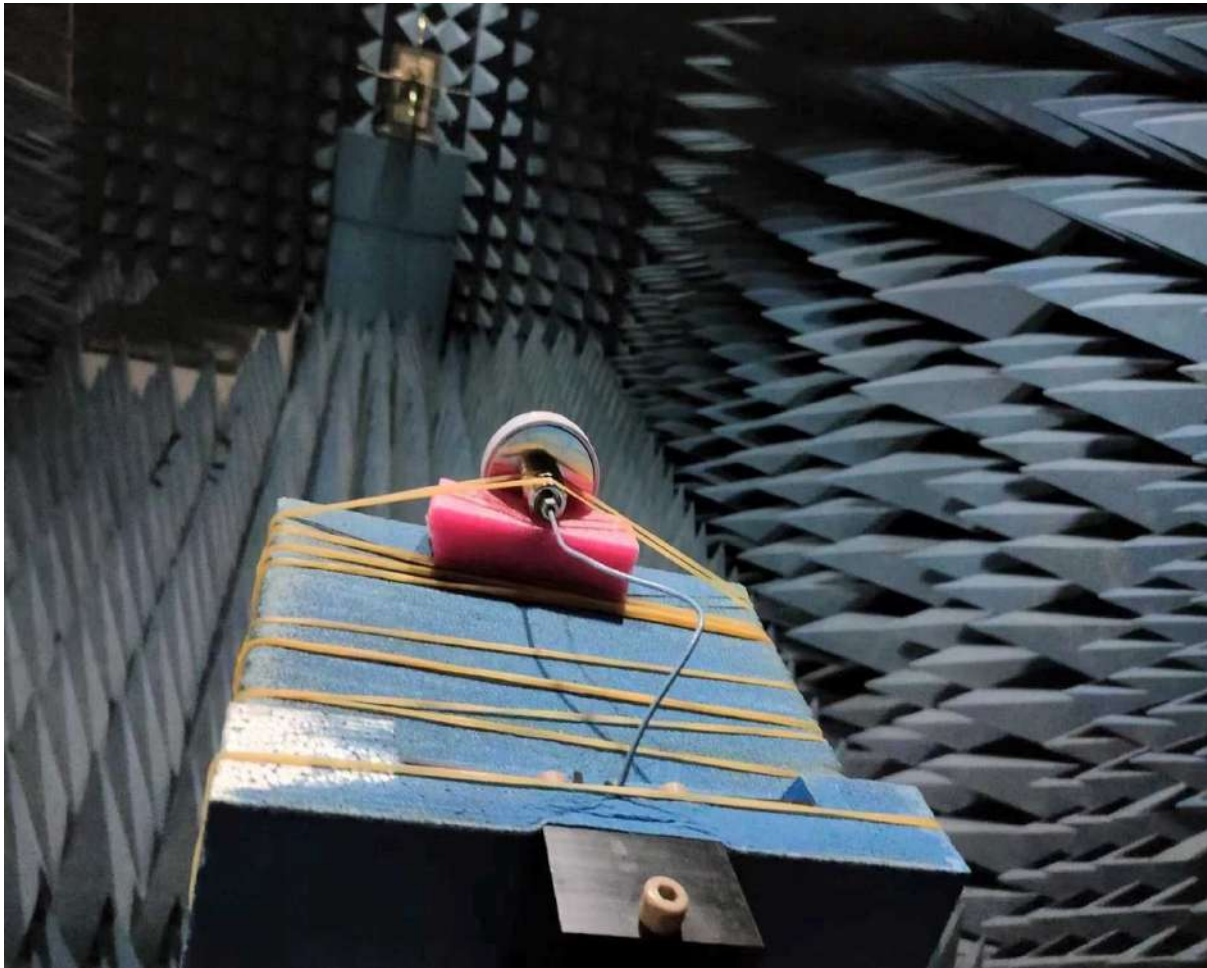
SMITH  
(R+jX)

SMITH  
(G+jB)

POLAR

LIN MAG

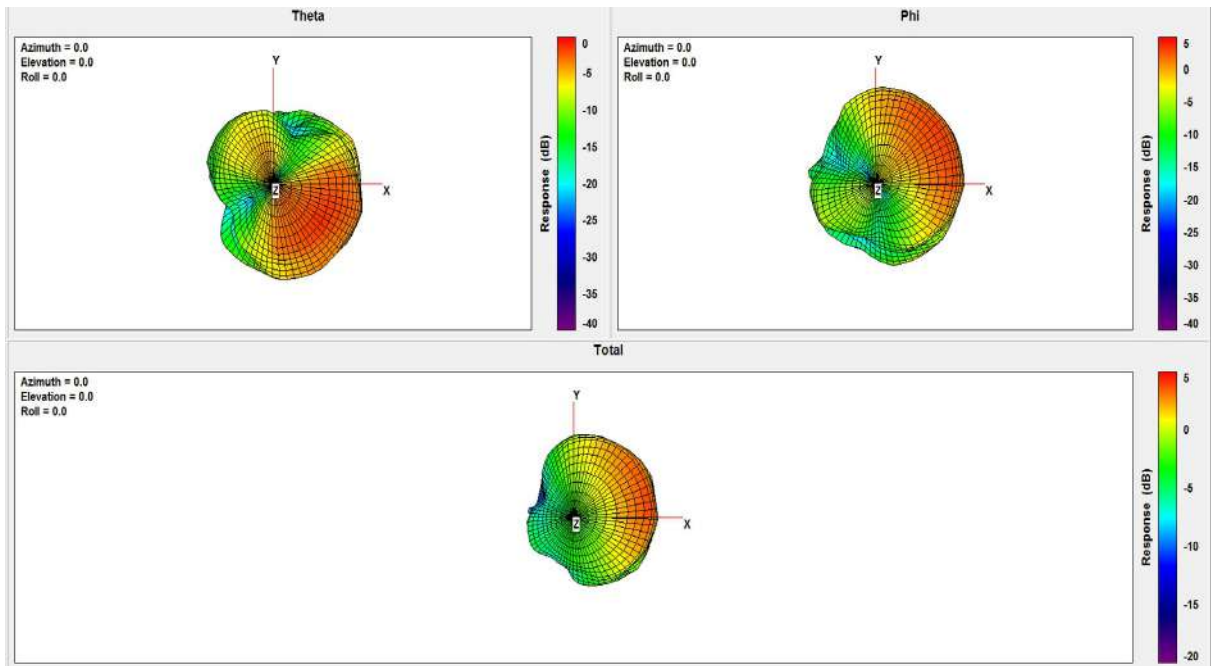
More 1/2



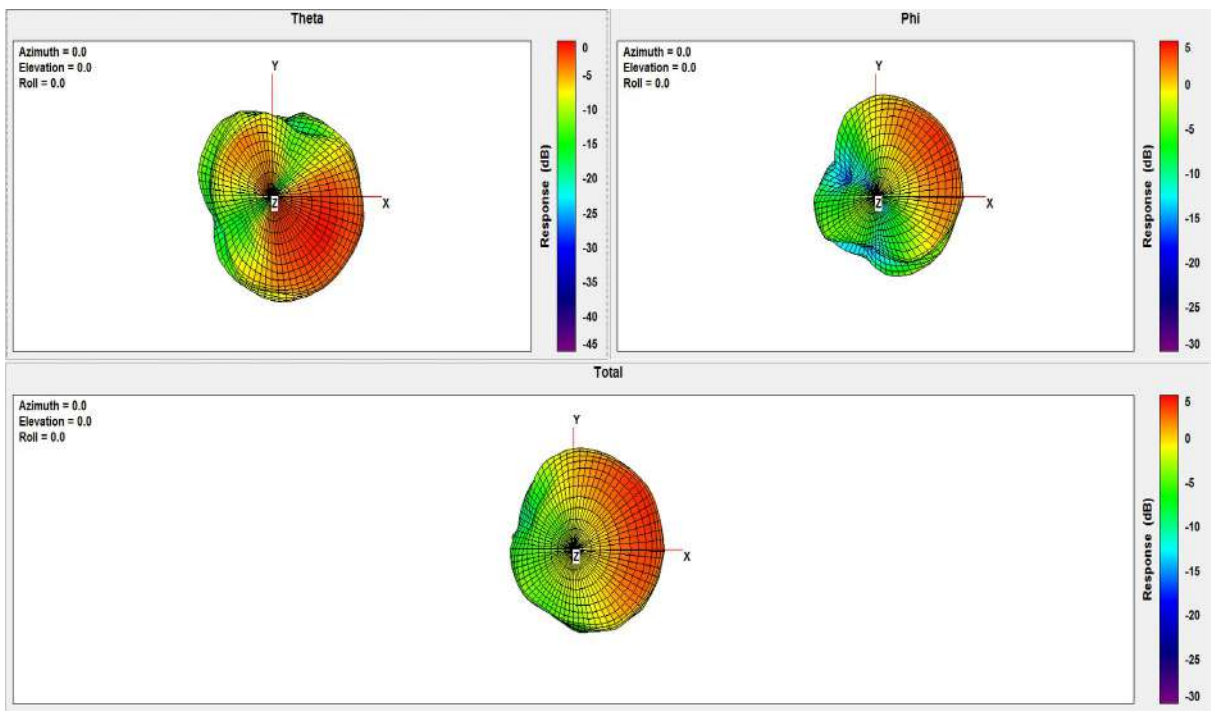
### 3D Total

Frequency (MHz)	Upper Hem. PRP (dBm)	Lower HEM. PRP (dBm)	Efficiency (dB)	Efficiency (%)	Gain (dBi)	Tot. Rad.Pwr. (dBm)
2200 MHz	-3.64	-9.17	-2.57	55.37	4.47	-2.57
2250 MHz	-3.61	-9.41	-2.60	54.95	4.98	-2.60
2300 MHz	-3.77	-9.69	-2.78	52.72	4.56	-2.78

**2200Mhz:**



**2250Mhz:**



**2300Mhz:**

