

# UHF Omni Antenna

## Model : TH-400A



### 1.. GENERAL DESCRIPTION

P/N
TH-400A-N(M)

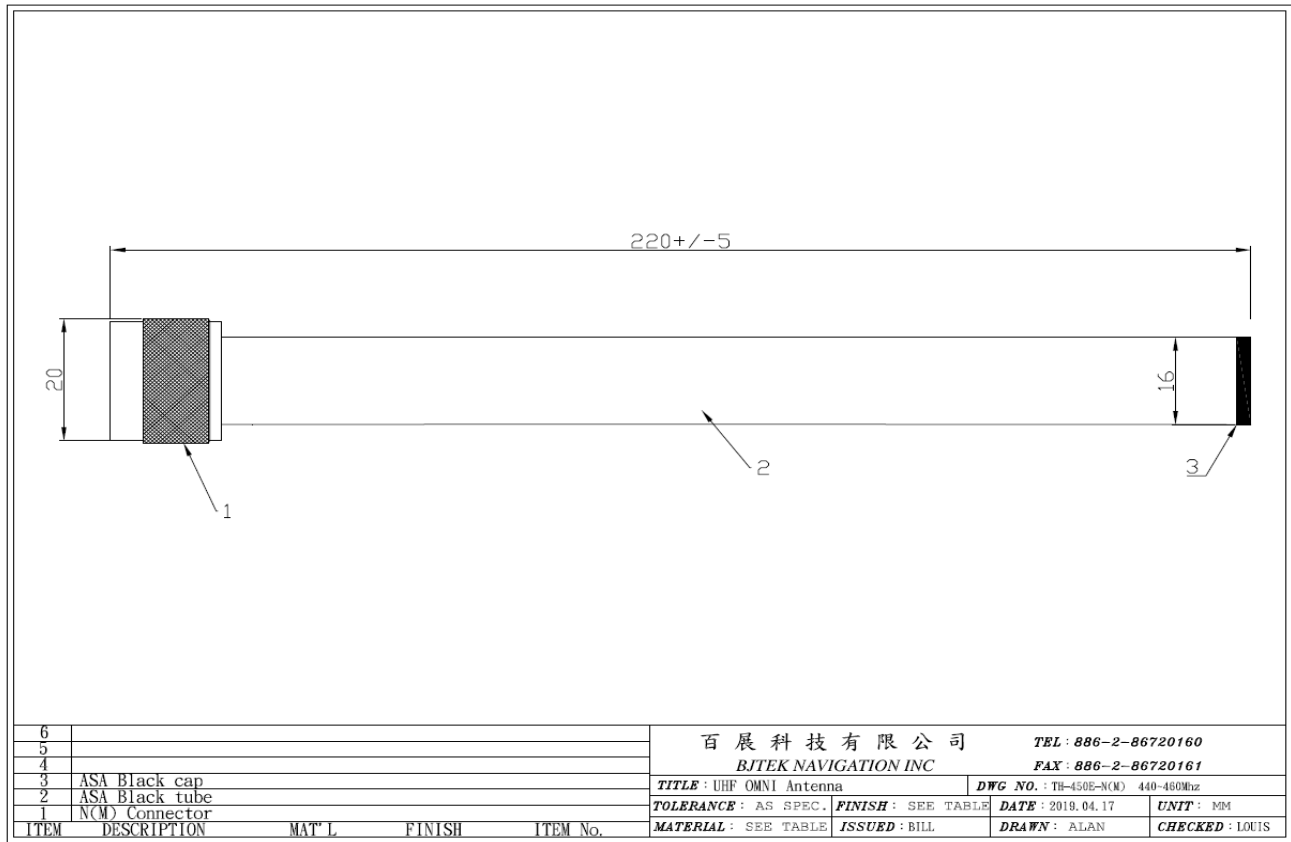
#### 1.1 Electrical Properties

Parameter	Description
Frequency Band	390~410MHz
Nominal Impedance	50 ohm
Polarization	Vertical
V.S.W.R	2.0:1
Power	50W
Gain	2db

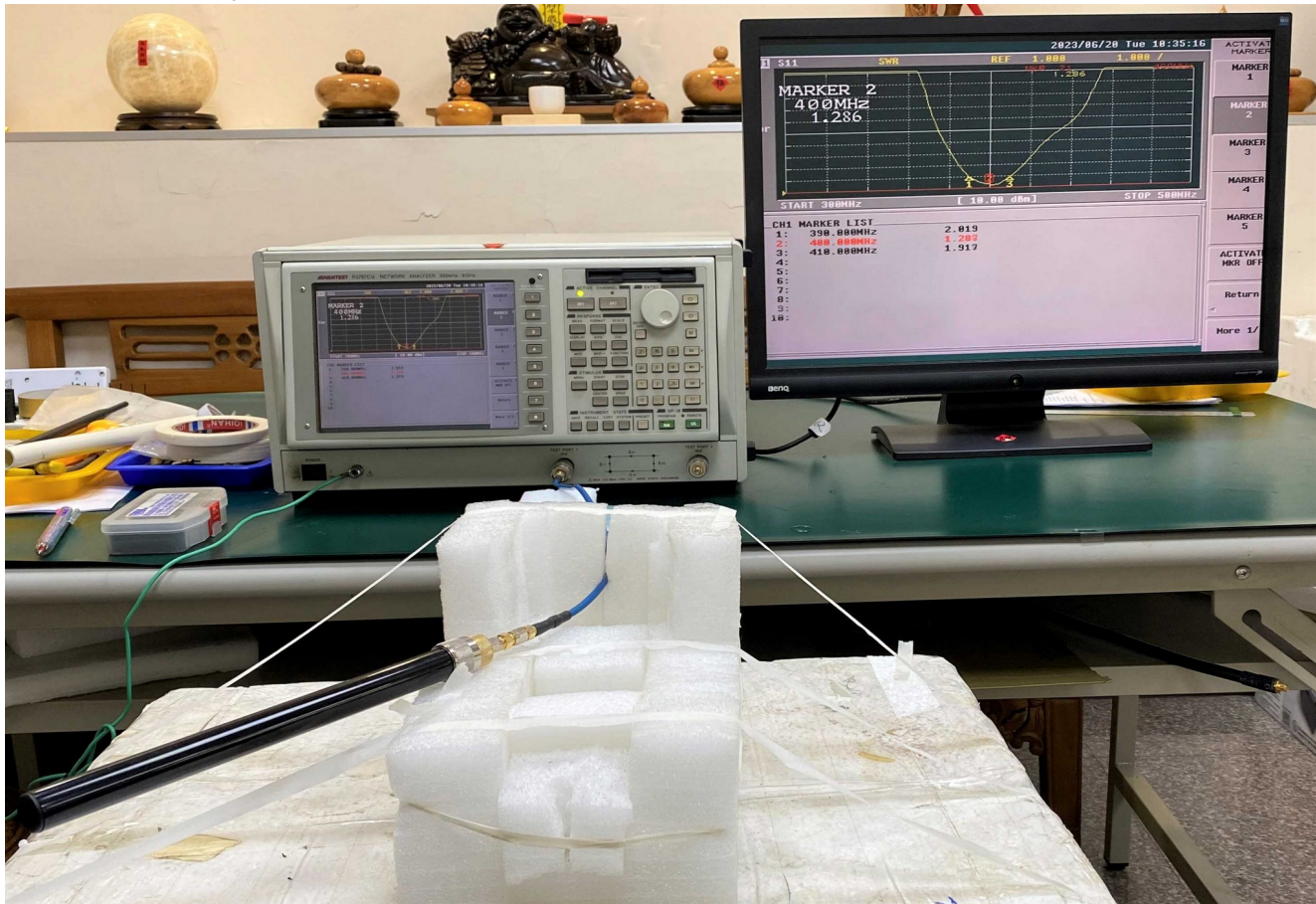
#### 1.2 Mechanical Properties

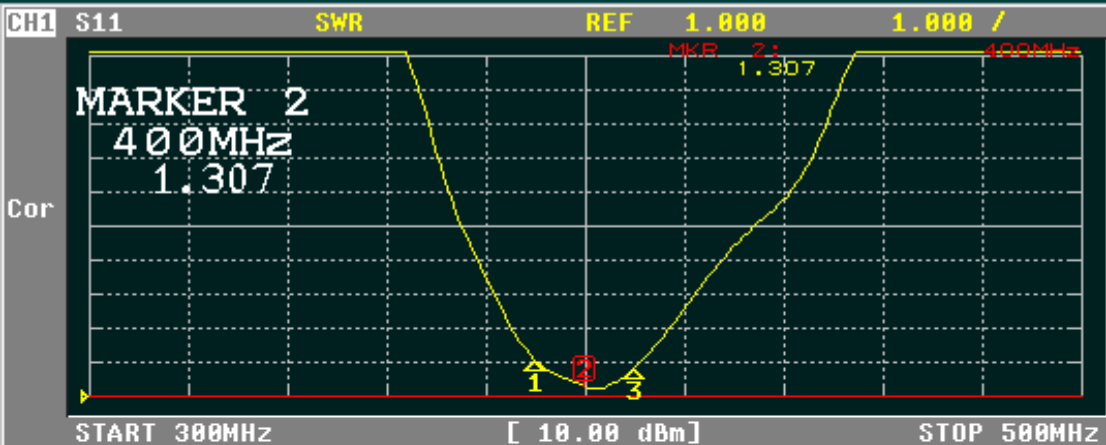
Parameter	Description
Antenna Type	External Antenna
Material	ASA
Touch Type	Screw Type
Connector Type	N Connector (Male)
Antenna Dimensions	220mm $\pm$ 5
Antenna Color	Black
Operating Temperature Range	-30°C~+80°C
Storage Temperature Range	-30°C~+80°C

## 2. Appearance



## 3. Return Loss, V.S.W.R. and Smith Chart





CH1 MARKER LIST

1:	390.000MHz	2.047
2:	400.000MHz	1.307
3:	410.000MHz	1.842
4:		
5:		
6:		
7:		
8:		
9:		
10:		

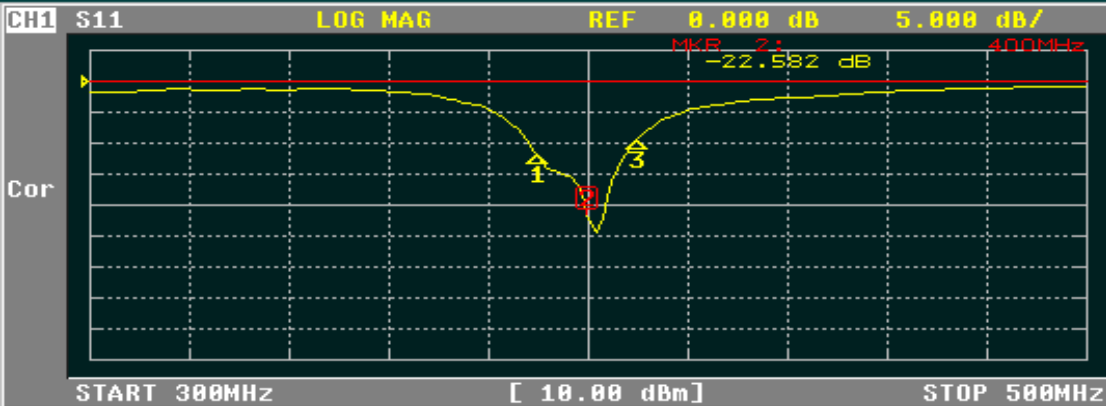
ACTIVATE MARKER

- MARKER 1
- MARKER 2
- MARKER 3
- MARKER 4
- MARKER 5

ACTIVATE MKR OFF

Return

More 1/2



CH1 MARKER LIST

1:	390.000MHz	-10.308 dB
2:	400.000MHz	-22.897 dB
3:	410.000MHz	-8.775 dB
4:		
5:		
6:		
7:		
8:		
9:		
10:		

FORMAT

LOG MAG

PHASE

DELAY

SMITH (R+jX)

SMITH (G+jB)

POLAR

LIN MAG

More 1/2

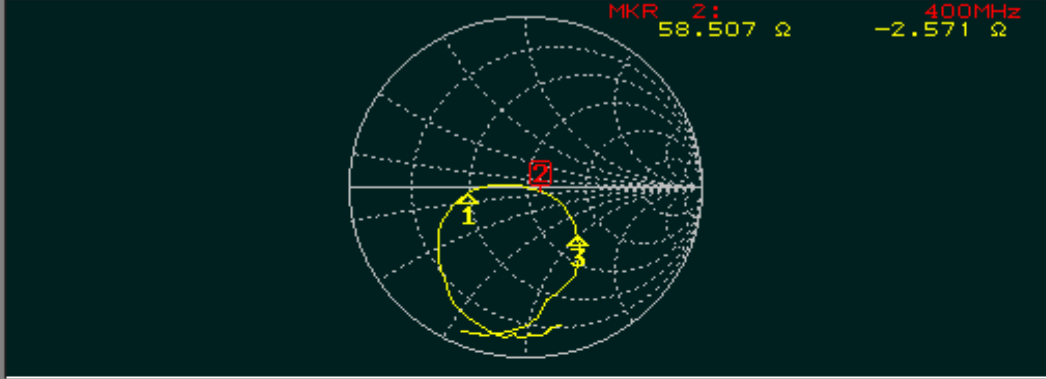
CH1 S11

SMITH(R+jX)

FS 1.000

MKR 2: 400MHz  
58.507 Ω -2.571 Ω

Cor



START 300MHz

[ 10.00 dBm]

STOP 500MHz

CH1 MARKER LIST

1:	390.000MHz	25.434 Ω	-2.296 Ω	177.689pF
2:	400.000MHz	58.135 Ω	-3.387 Ω	117.466pF
3:	410.000MHz	71.917 Ω	-45.371 Ω	8.555pF
4:				
5:				
6:				
7:				
8:				
9:				
10:				

FORMAT

LOG MAG

PHASE

DELAY

SMITH  
(R+jX)

SMITH  
(G+jB)

POLAR

LIN MAG

More 1/2