

# 2.25G Antenna

**MODEL: TH-80-2250**



## 1. GENERAL DESCRIPTION

Model No
TH80-SMA90(M)-2.25G

Below is a table summarizing the antenna design specification.

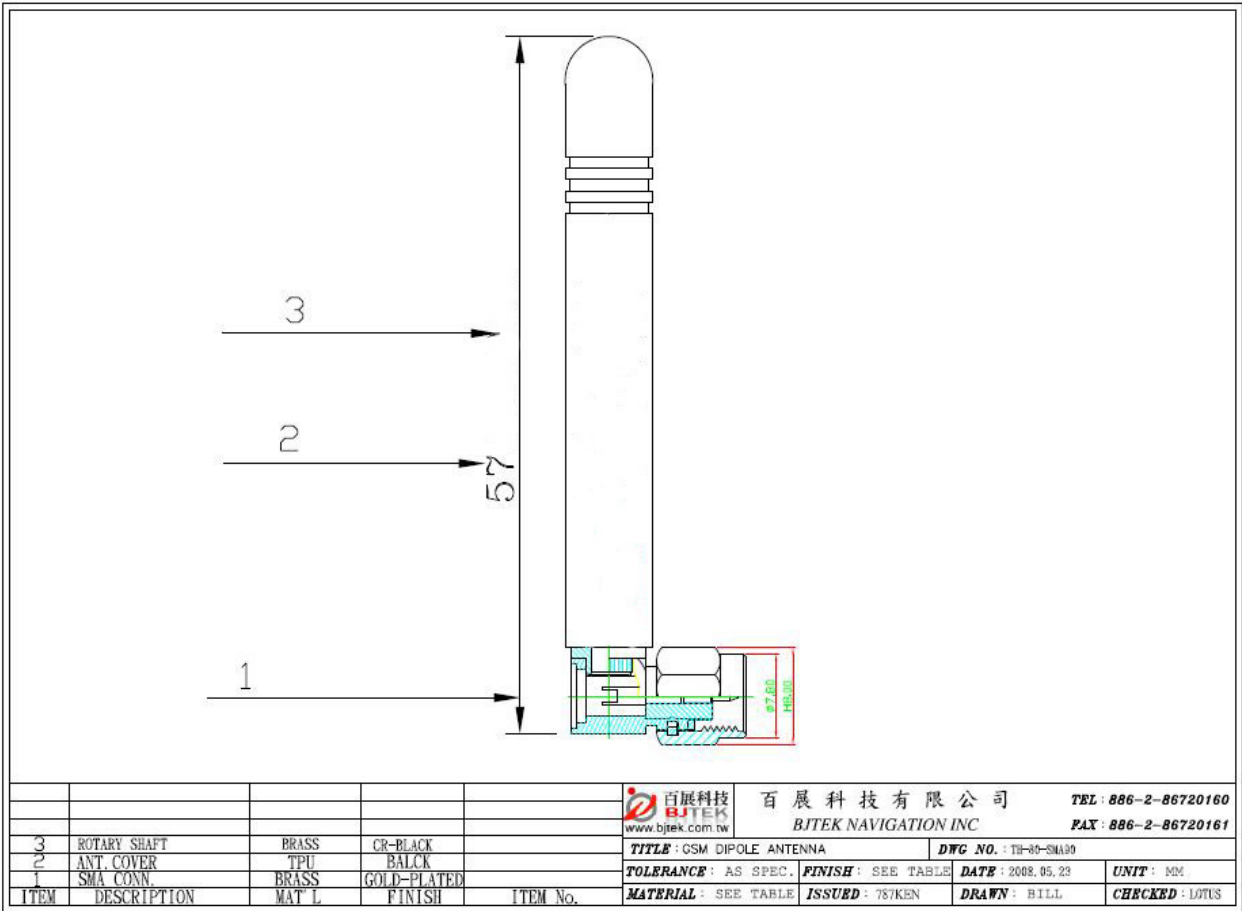
### 1.1 Electrical Properties

Parameter	Description
Frequency Band	2.2 ~2.3GHz
Nominal Impedance	50 ohm
Polarization	Vertical / monopole
Return Loss	Please See Data-1
V.S.W.R	2.0 : 1
Gain	1db
Note: Gain includes the cable loss	

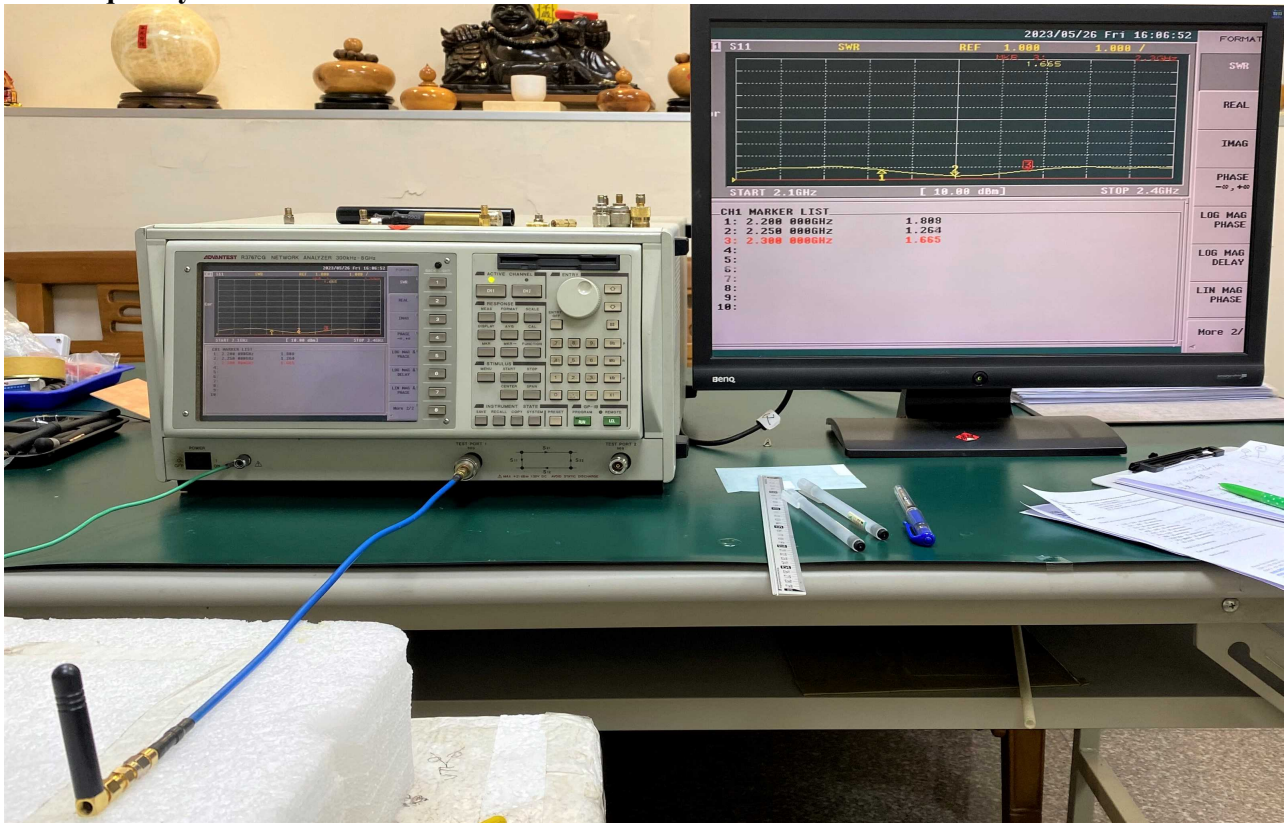
### 1.2 Mechanical Properties

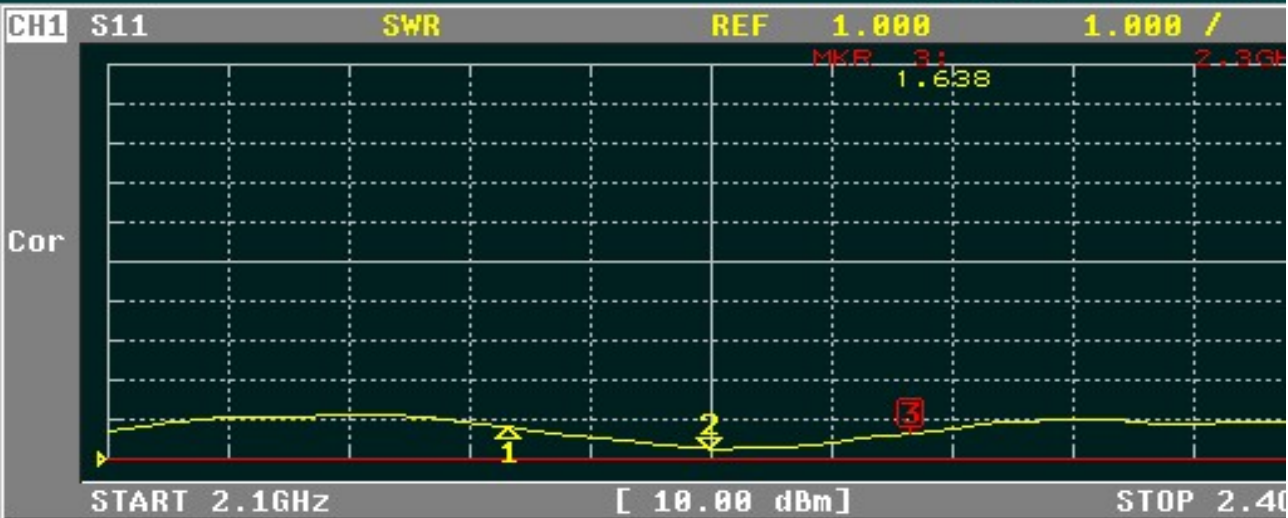
Parameter	Description
Antenna Type	External Antenna
Antenna Material	TPU
Touch Type	Screw Type
Connector Type	SMA 90°(Male)
Antenna Dimensions	57mm $\pm$ 2
Antenna Color	Black
Operating Temperature Range	-30°C~+70°C
Storage Temperature Range	-30°C~+70°C

## 2. Appearance



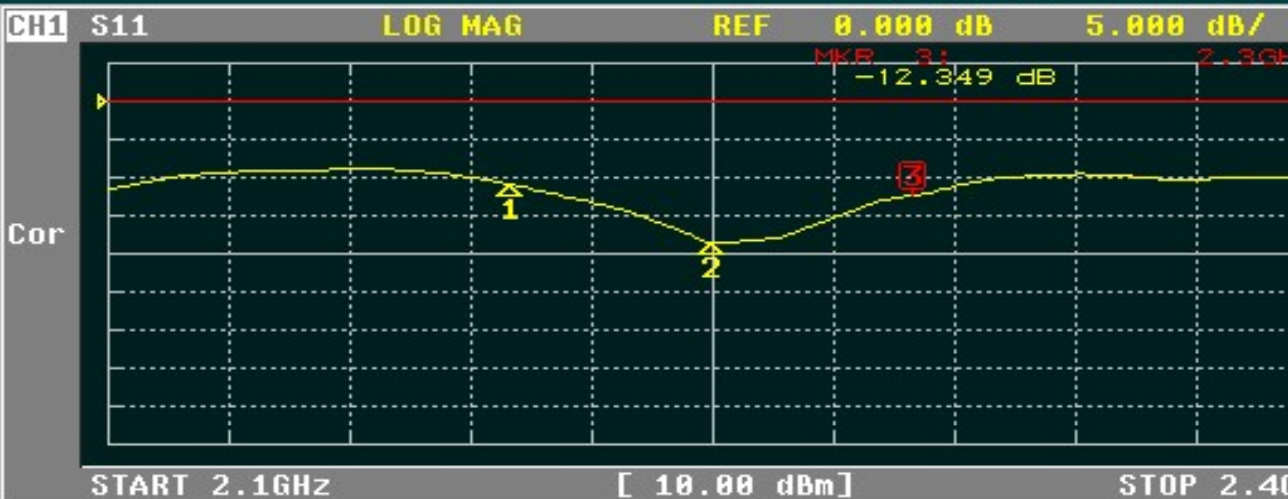
## 3. Frequency





CH1 MARKER LIST

1:	2.200 000GHz	1.802
2:	2.250 000GHz	1.263
3:	2.300 000GHz	1.638
4:		
5:		
6:		
7:		
8:		
9:		



CH1 MARKER LIST

1:	2.200 000GHz	-10.891 dB
2:	2.250 000GHz	-18.528 dB
3:	2.300 000GHz	-12.354 dB
4:		
5:		
6:		
7:		
8:		
9:		

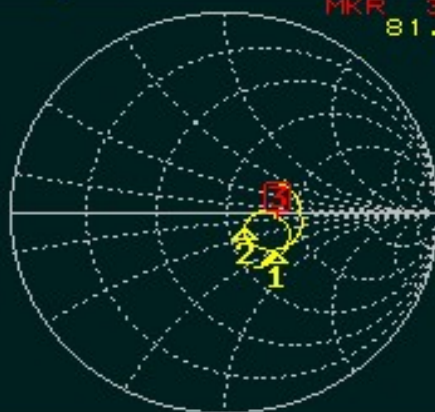
CH1 S11

SMITH(R+jX)

FS 1.000

MKR 3: 2.300 GHz  
81.937 Ω -3.850 Ω

Cor



START 2.1GHz

[ 10.00 dBm ]

STOP 2.40

CH1 MARKER LIST

1:	2.200 000GHz	71.921 Ω	-28.599 Ω	2.529pF
2:	2.250 000GHz	59.523 Ω	-7.929 Ω	8.920pF
3:	2.300 000GHz	81.937 Ω	-3.850 Ω	17.970pF
4:				
5:				
6:				
7:				
8:				
9:				