

# 900Mhz & 2.4G Dual Band Gooseneck Antenna

## MODEL: TH-9024-TNC(M)



### 1. GENERAL DESCRIPTION

Model No	P/N
TH-9024	TH9024-TNC(M)

Below is a table summarizing the antenna design specification.

#### 1.1 Electrical Properties


Parameter	Description
Frequency Band	902~928 MHz & 2.4~2.5Ghz
Nominal Impedance	50 ohm
Polarization	Vertical
Electrical Wave	Dipole
Return Loss	Please See Data-1
V.S.W.R	2.0 : 1
Gain	3db

#### 1.2 Mechanical Properties

Parameter	Description
Antenna Type	External Antenna
Touch Type	Screw Type
Connector Type	TNC 180°(Male)
Antenna Dimensions	365mm ±10
Antenna Color	Black
Operating Temperature Range	-30°C~+80°C
Storage Temperature Range	-30°C~+80°C

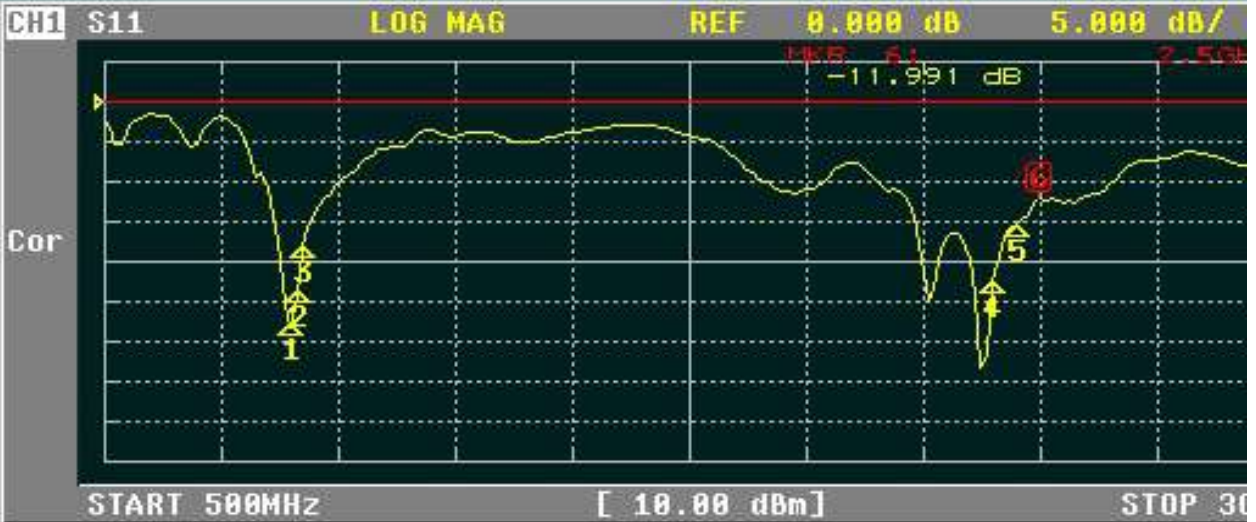
## 2. Appearance



 Third angle projection	CUSTOMER'S	MODEL	PARTS NUMBER	FREQUENCY	UNIT	SCALE	DATE	VERSION
	TOLERANCE	X. XX±0.15	NAME	PARTS NUMBER	APPROVED	CHECKED	DRAWING	DESIGNED
	SURFACE ROUGHNESS		APPEARANCE					

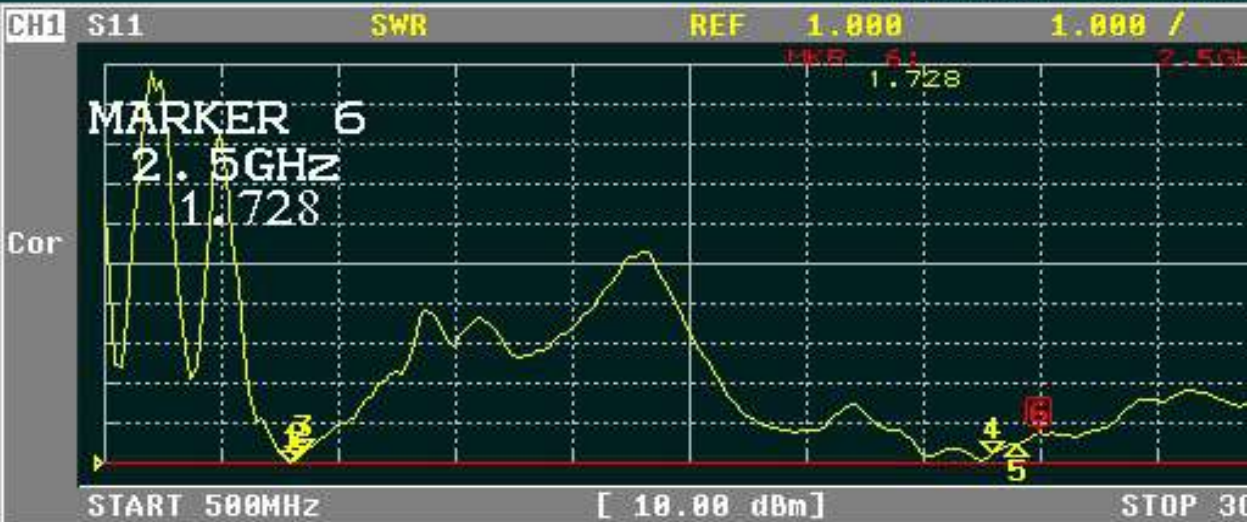
## 3. Frequency





CH1 MARKER LIST

1:	902.000MHz	-27.685 dB
2:	915.000MHz	-23.227 dB
3:	928.000MHz	-17.603 dB
4:	2.400 000GHz	-22.142 dB
5:	2.450 000GHz	-15.107 dB
6:	2.500 000GHz	-12.023 dB
7:		
8:		
9:		



CH1 MARKER LIST

1:	902.000MHz	1.032
2:	915.000MHz	1.130
3:	928.000MHz	1.290
4:	2.400 000GHz	1.243
5:	2.450 000GHz	1.479
6:	2.500 000GHz	1.728
7:		
8:		
9:		

CH1 S11

SMITH(R+jX)

FS 1.000

MARKER 6: 2.500 GHz  
30.118  $\Omega$  6.886  $\Omega$

Cor



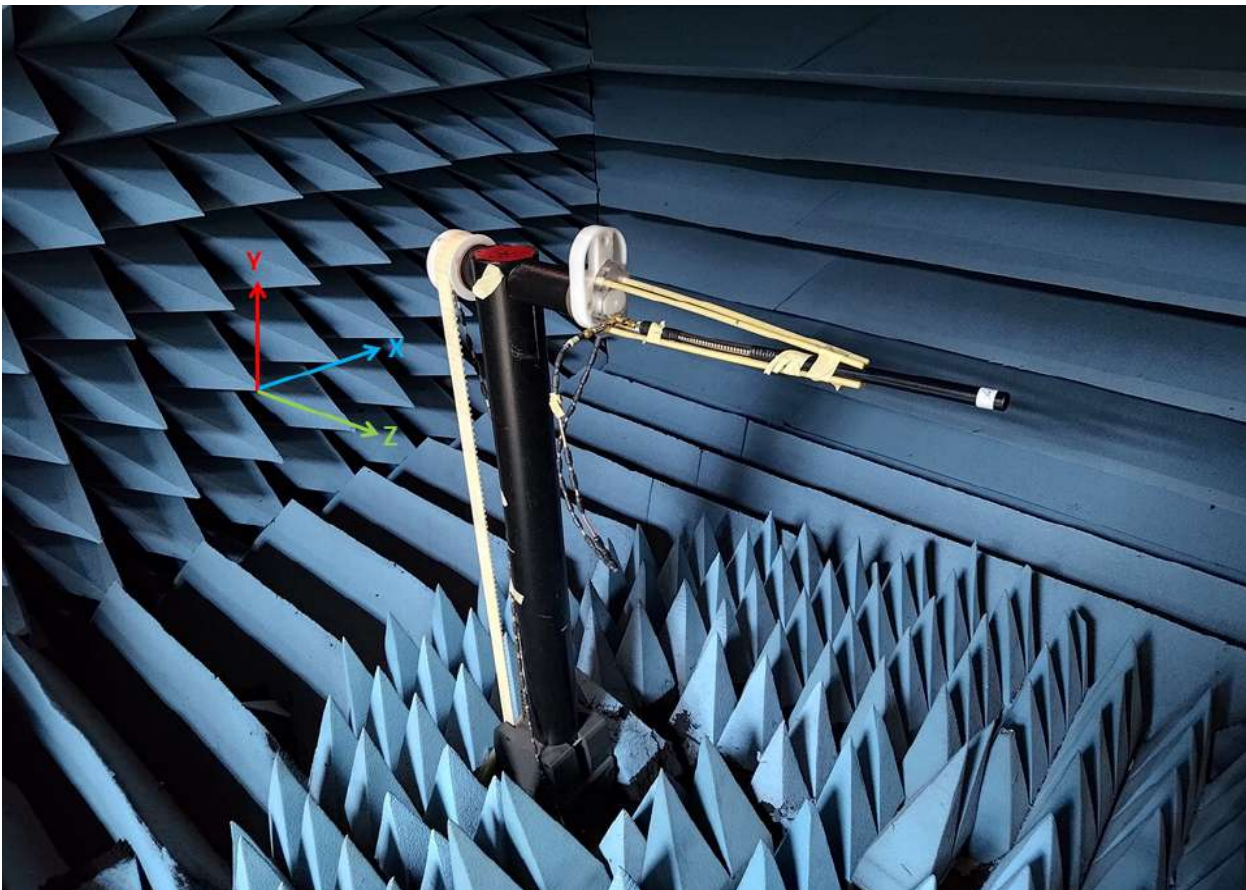
START 500MHz

[ 10.00 dBm ]

STOP 30

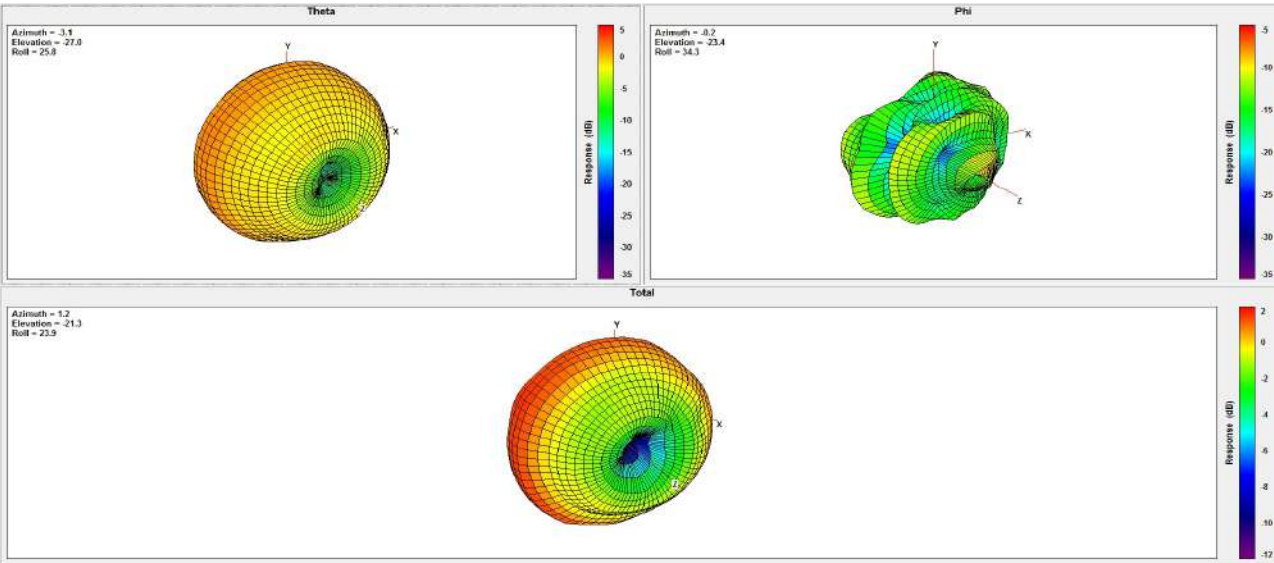
CH1 MARKER LIST

1:	902.000MHz	45.249 $\Omega$	2.333 $\Omega$	411.661pH
2:	915.000MHz	44.429 $\Omega$	6.346 $\Omega$	1.103nH
3:	928.000MHz	43.791 $\Omega$	12.754 $\Omega$	2.187nH
4:	2.400 000GHz	41.572 $\Omega$	-2.855 $\Omega$	23.222pF
5:	2.450 000GHz	34.846 $\Omega$	1.743 $\Omega$	113.261pH
6:	2.500 000GHz	30.118 $\Omega$	6.886 $\Omega$	438.426pH
7:				
8:				
9:				

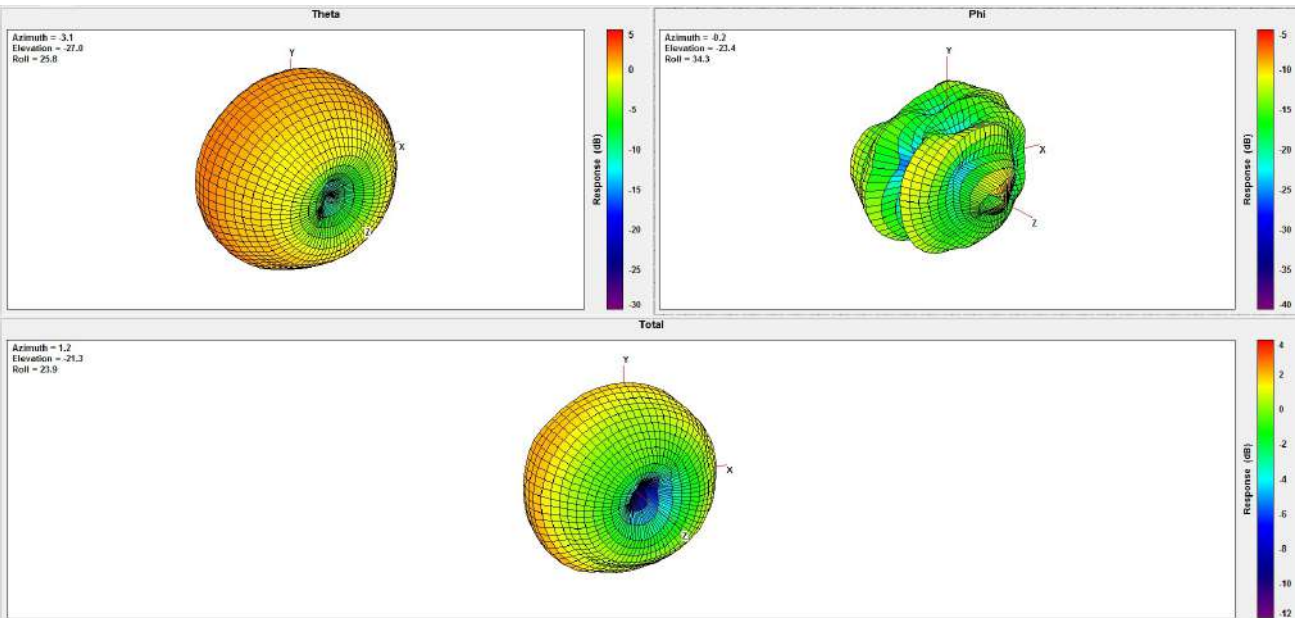


Frequency (MHz)	850	868	902	915	928	930	960	2400	2450	2500
Peak Gain (dBi)	1.86	2.61	2.80	3.02	3.34	3.35	4.30	5.23	5.23	4.98
Efficiency (%)	79.77	80.54	81.46	81.98	82.70	83.43	81.59	83.13	82.02	84.28

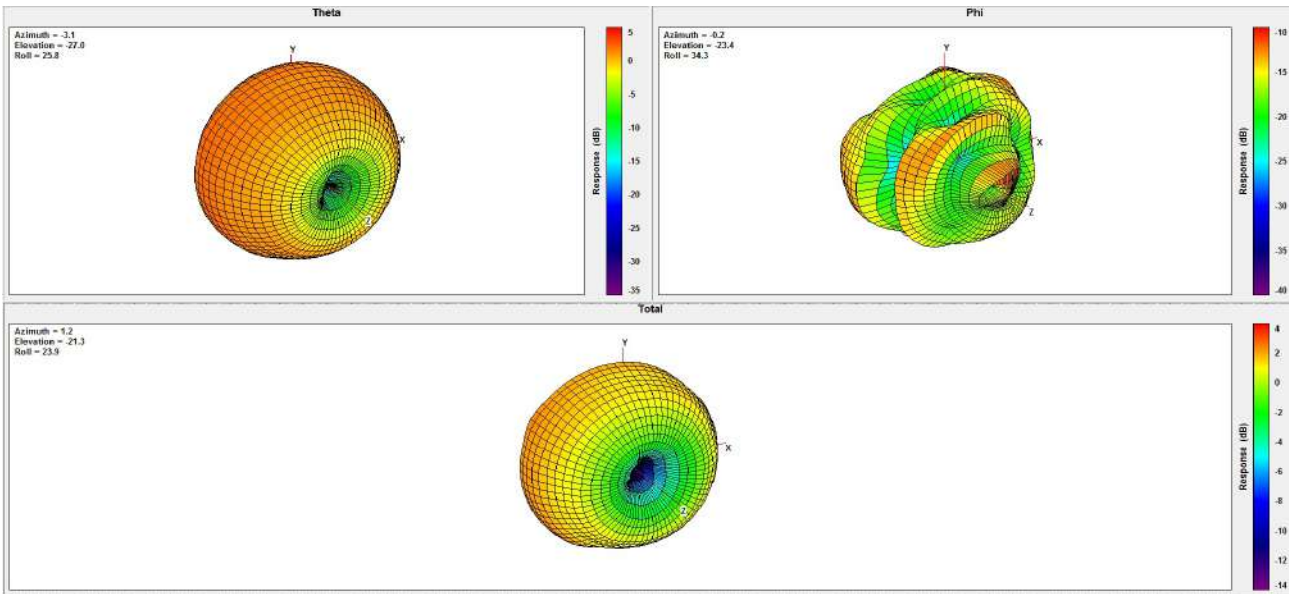
**850Mhz :**



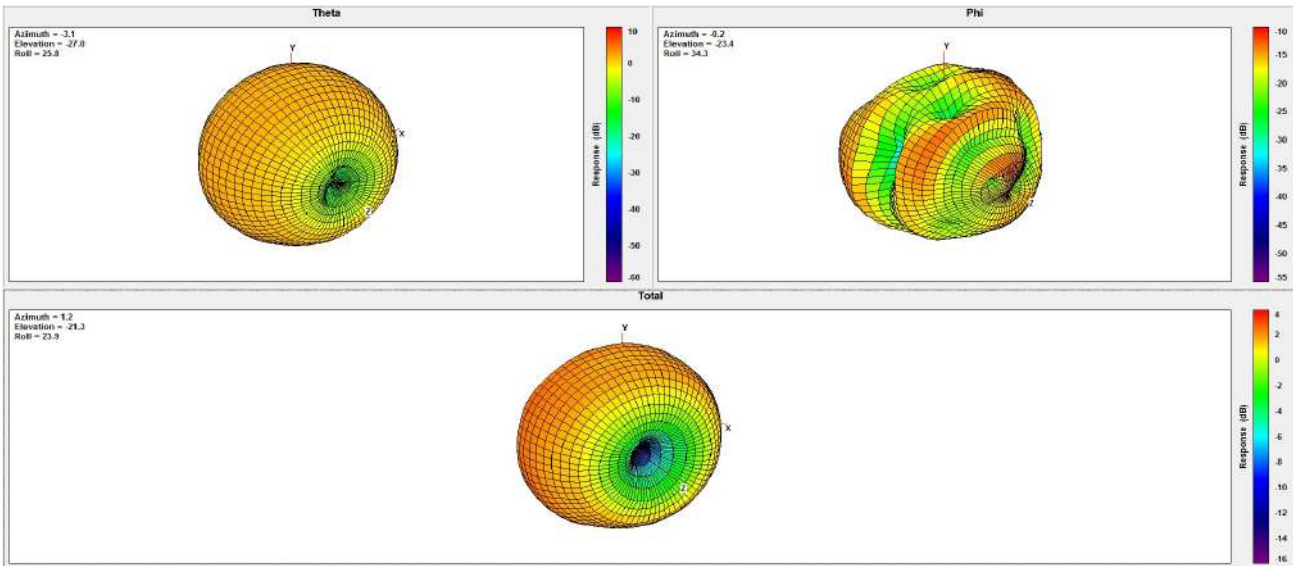
**868Mhz:**



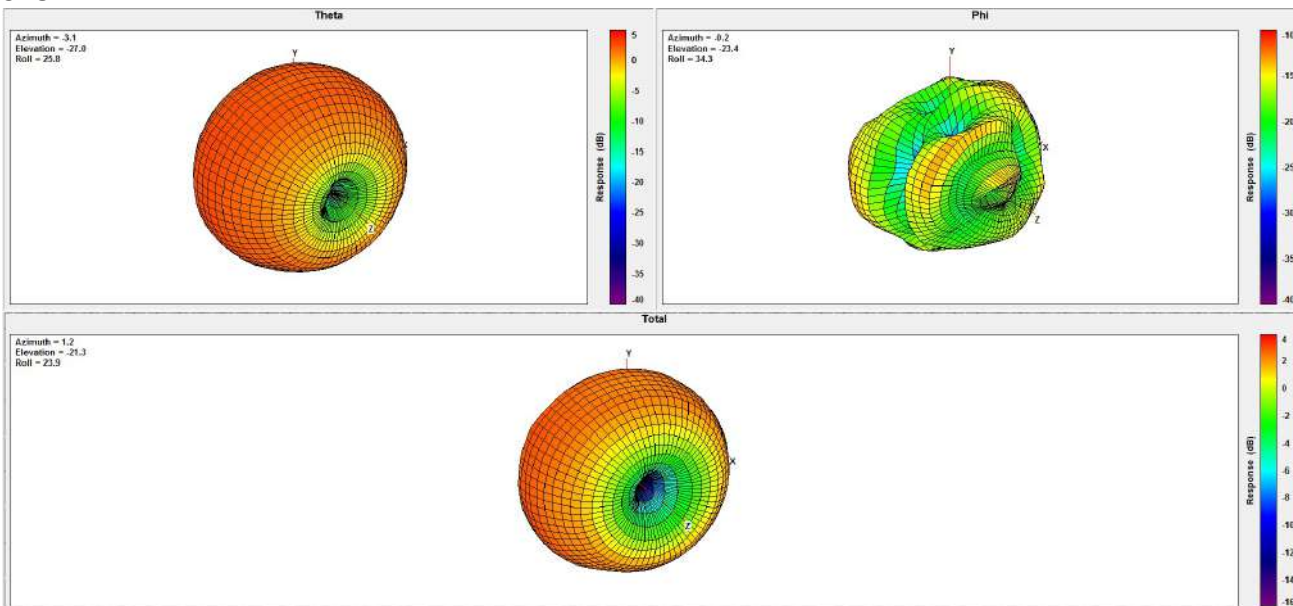
### 902Mhz:



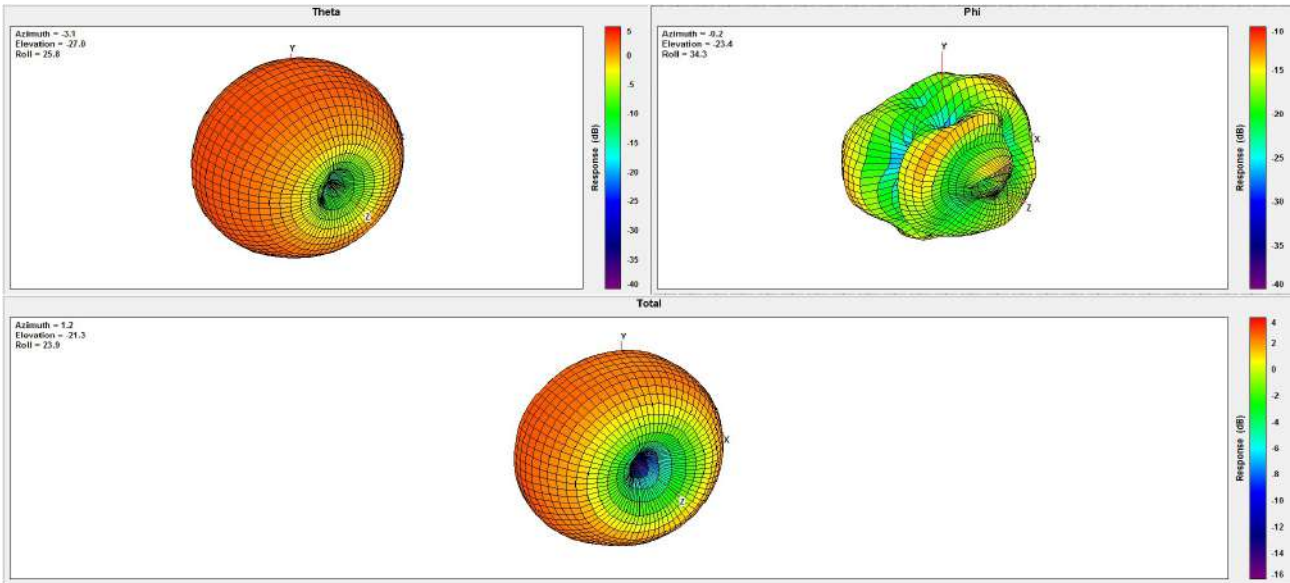
### 915Mhz:



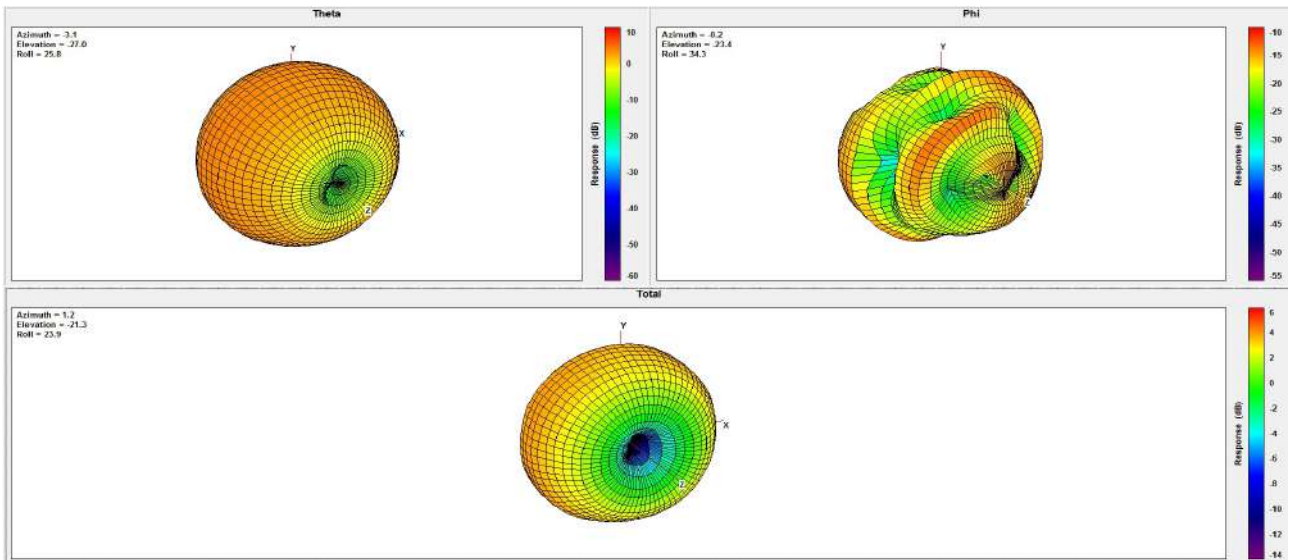
### 928Mhz:



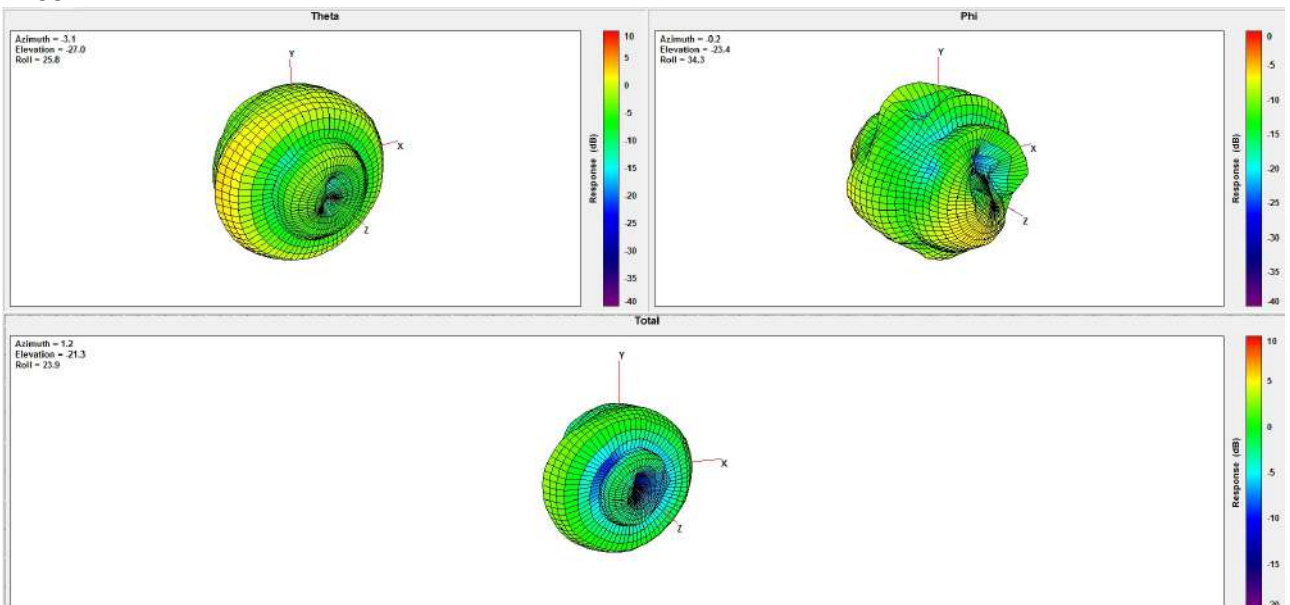
### 930Mhz:



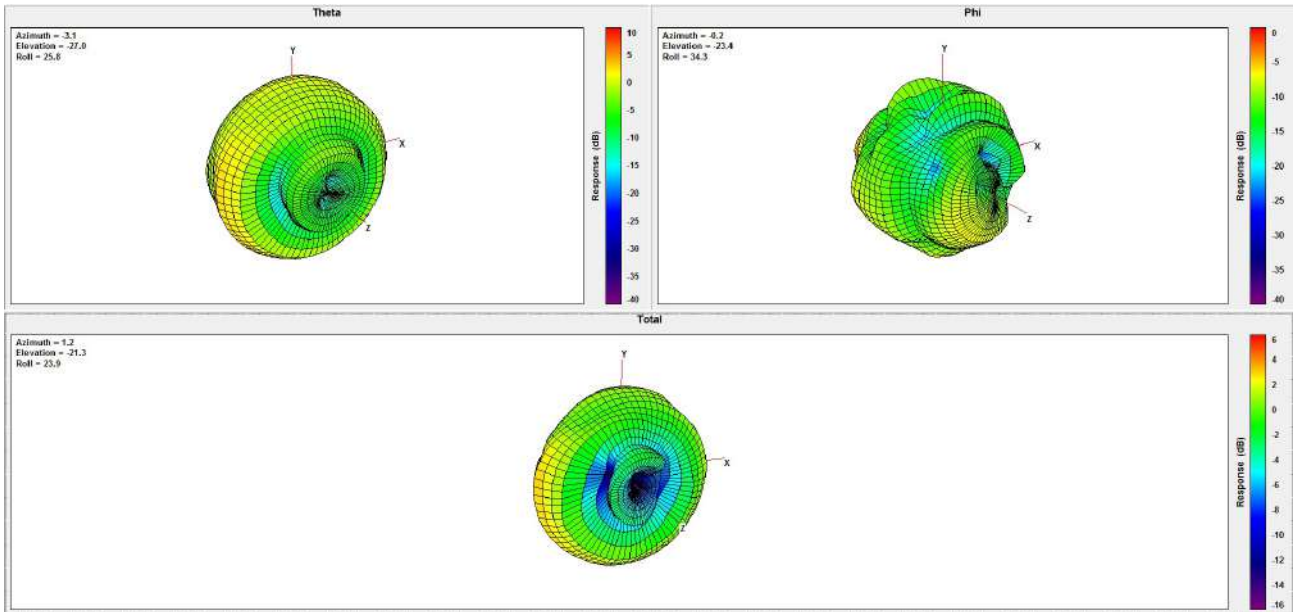
### 960Mhz:



### 2400Mhz:



## 2450Mhz:



## 2500Mhz:

