

900Mhz & 2.4G Dual Band Gooseneck Antenna

MODEL: TH-9024A-N(M)



1. GENERAL DESCRIPTION

Model No	P/N
TH-9024A	TH9024A-N(M)

Below is a table summarizing the antenna design specification.

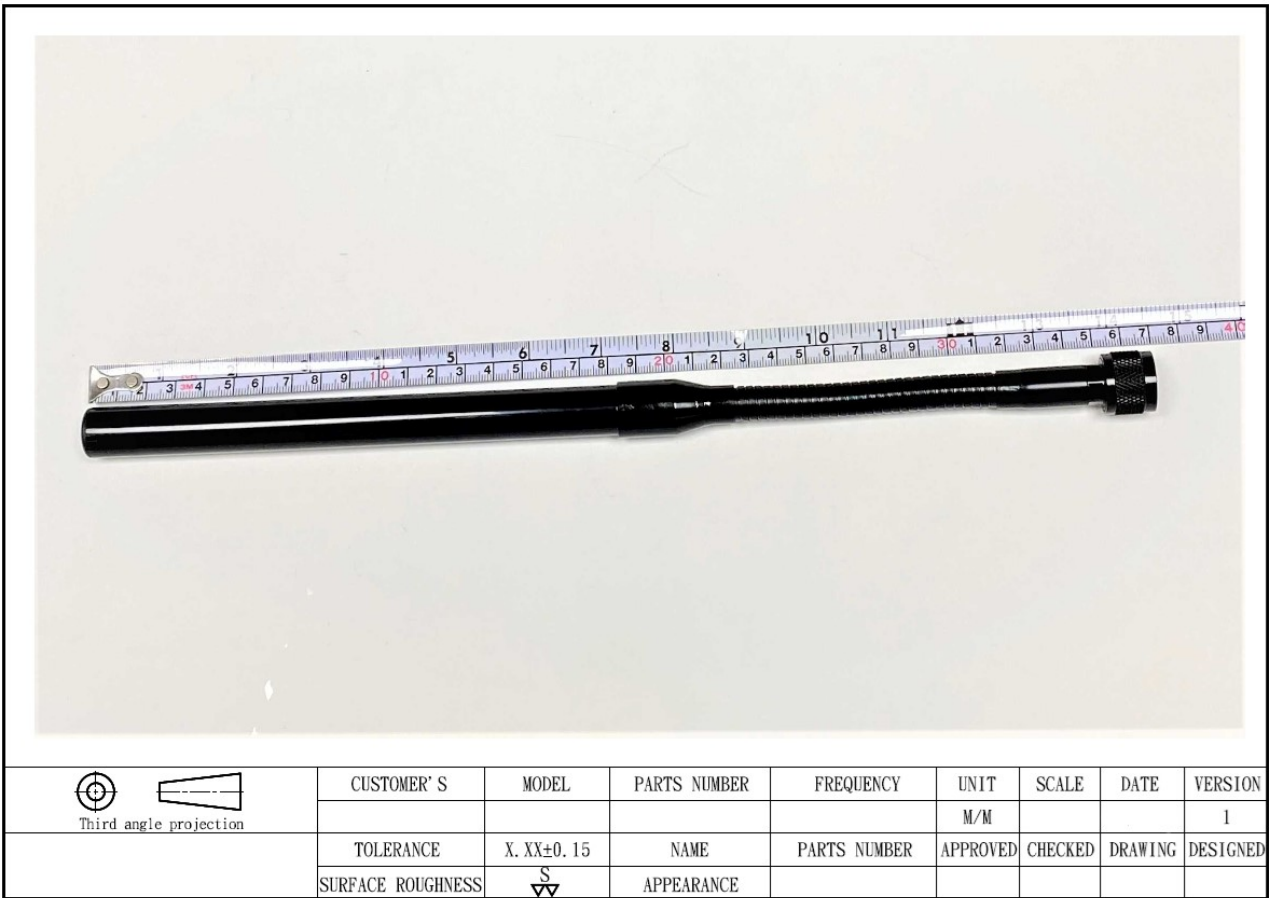
1.1 Electrical Properties

Parameter	Description
Frequency Band	902~928 MHz & 2.4~2.5Ghz
Nominal Impedance	50 ohm
Polarization	Vertical
Electrical Wave	Dipole
Return Loss	Please See Data-1
V.S.W.R	2.0 : 1
Gain	3db

1.2 Mechanical Properties

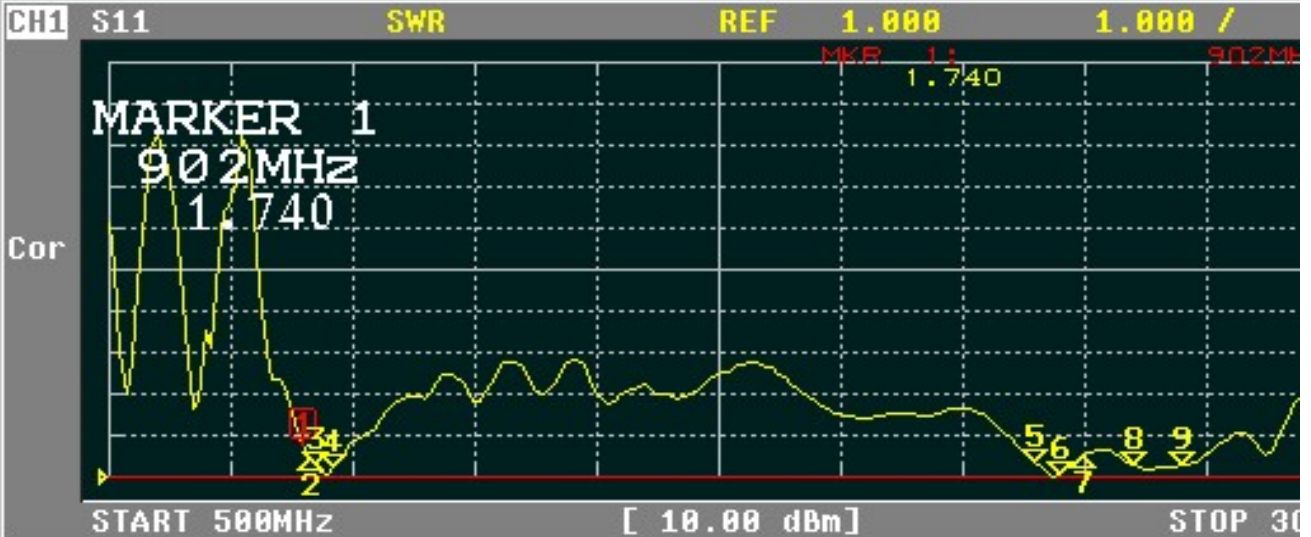
Parameter	Description
Antenna Type	External Antenna
Touch Type	Screw Type
Connector Type	N(Male)
Antenna Dimensions	370mm ±15
Antenna Color	Black
Operating Temperature Range	-30°C~+80°C
Storage Temperature Range	-30°C~+80°C

2. Appearance



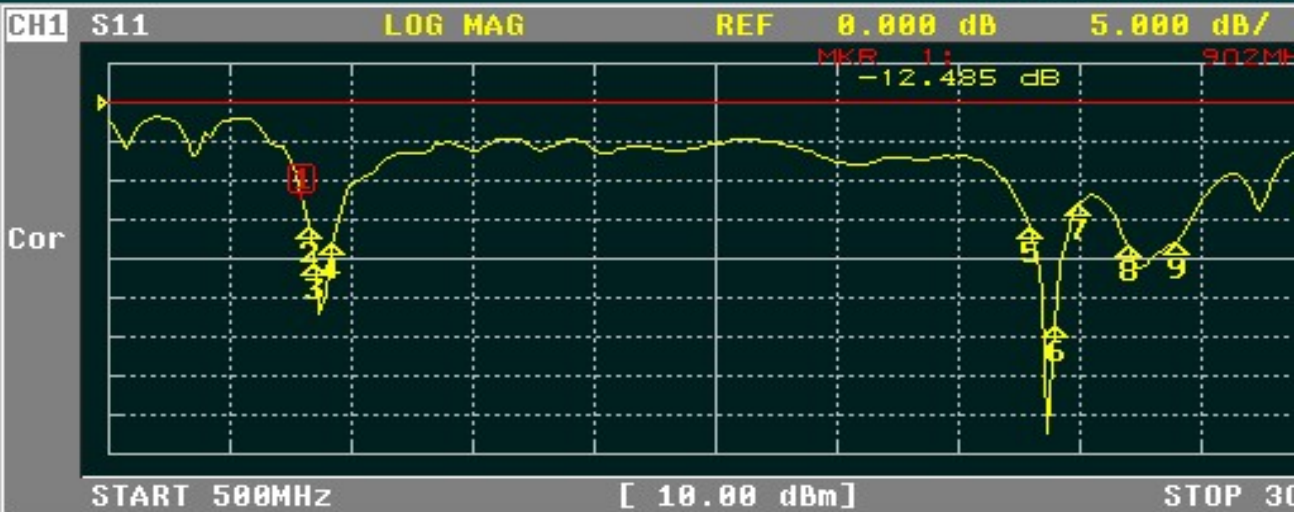
3. Frequency





CH1 MARKER LIST

1:	902.000MHz	1.740
2:	915.000MHz	1.446
3:	928.000MHz	1.244
4:	965.000MHz	1.263
5:	2.400 000GHz	1.360
6:	2.450 000GHz	1.071
7:	2.500 000GHz	1.545
8:	2.600 000GHz	1.282
9:	2.700 000GHz	1.270



CH1 MARKER LIST

1:	902.000MHz	-12.478 dB
2:	915.000MHz	-16.118 dB
3:	928.000MHz	-21.203 dB
4:	965.000MHz	-17.868 dB
5:	2.400 000GHz	-15.969 dB
6:	2.450 000GHz	-28.557 dB
7:	2.500 000GHz	-13.068 dB
8:	2.600 000GHz	-18.239 dB
9:	2.700 000GHz	-17.004 dB

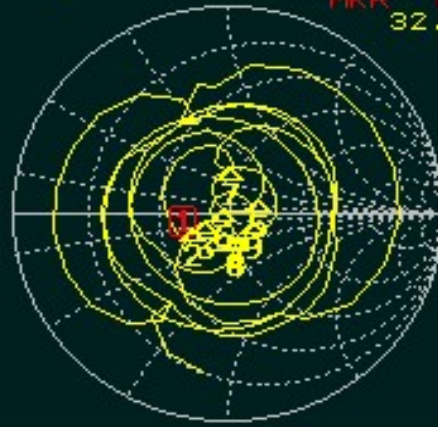
CH1 S11

SMITH(R+jX)

FS 1.000

MKR 1: 902MHz
32.227 Ω -9.484 Ω

Cor



START 500MHz

[10.00 dBm]

STOP 3000MHz

CH1 MARKER LIST

1:	902.000MHz	32.227 Ω	-9.484 Ω	18.603pF
2:	915.000MHz	36.480 Ω	-4.865 Ω	35.748pF
3:	928.000MHz	41.496 Ω	-2.897 Ω	59.195pF
4:	965.000MHz	53.339 Ω	-12.623 Ω	13.065pF
5:	2.400 000GHz	65.583 Ω	8.655 Ω	574.012pH
6:	2.450 000GHz	47.308 Ω	1.987 Ω	129.083pH
7:	2.500 000GHz	46.024 Ω	21.027 Ω	1.338nH
8:	2.600 000GHz	51.956 Ω	-12.381 Ω	4.943pF
9:	2.700 000GHz	60.210 Ω	5.122 Ω	41.507pF