

2000Mhz Gooseneck Antenna

MODEL: TH-2000-N(M)



1. GENERAL DESCRIPTION

Model No	P/N
TH-2000	TH2000-N(M)

Below is a table summarizing the antenna design specification.

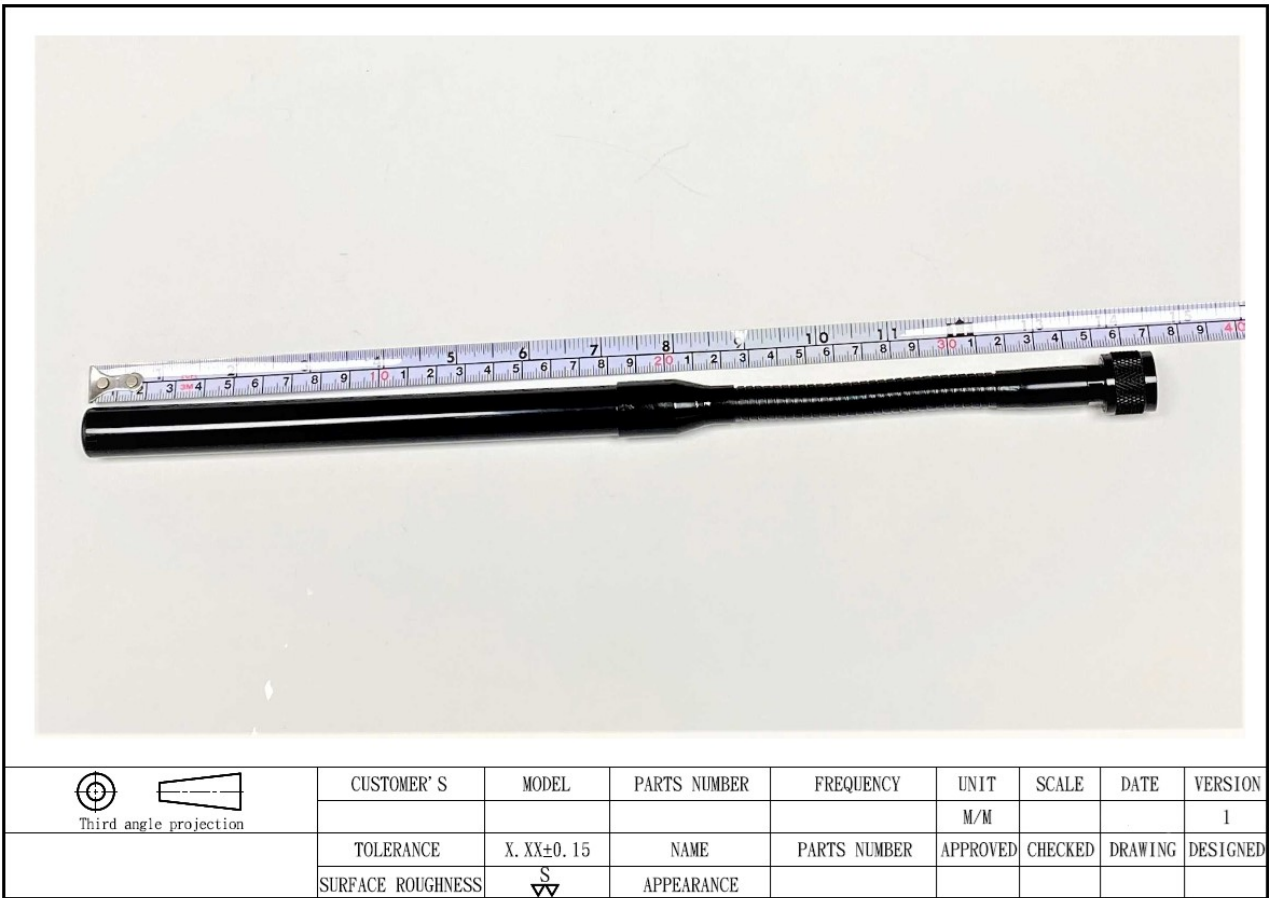
1.1 Electrical Properties

Parameter	Description
Frequency Band	2000~3000 MHz
Nominal Impedance	50 ohm
Polarization	Vertical
Electrical Wave	Dipole
Return Loss	Please See Data-1
V.S.W.R	2.0 : 1
Gain	3db

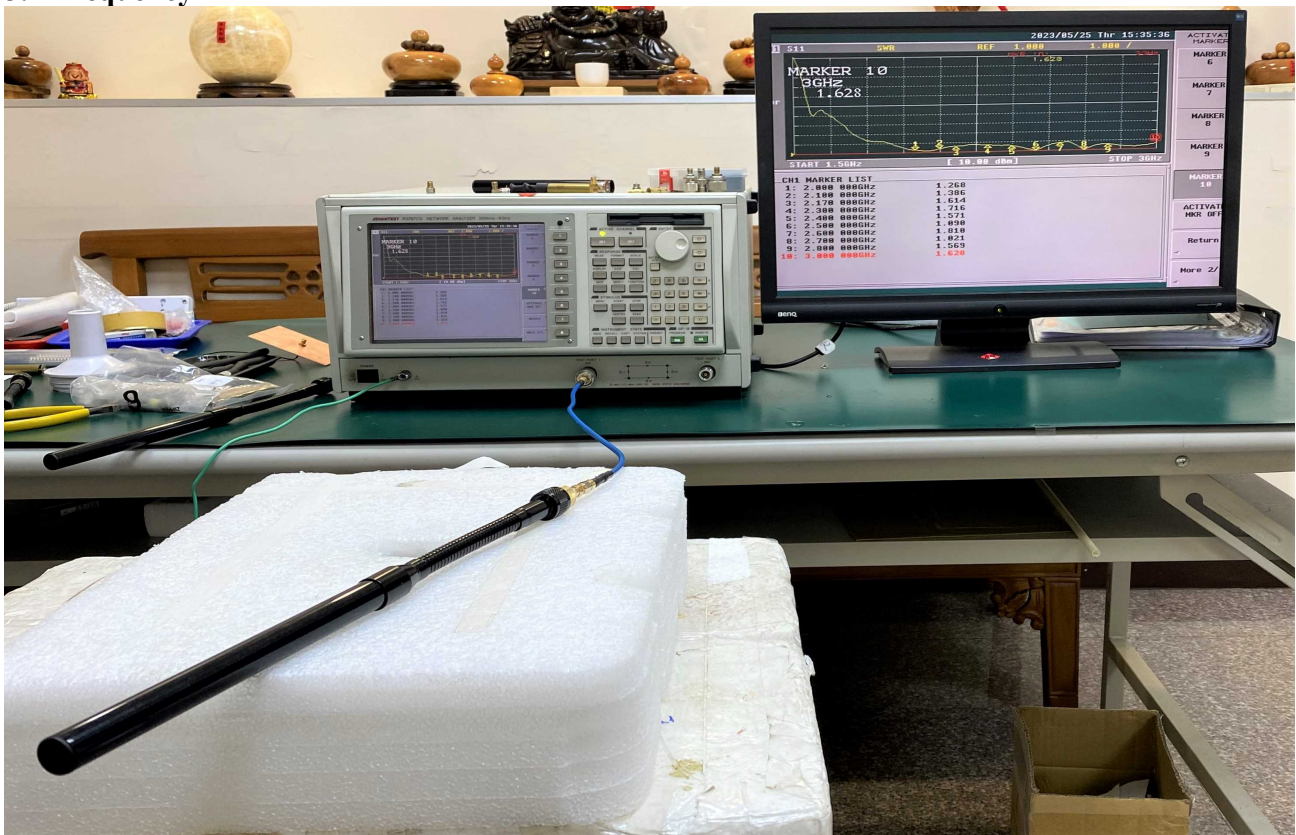
1.2 Mechanical Properties

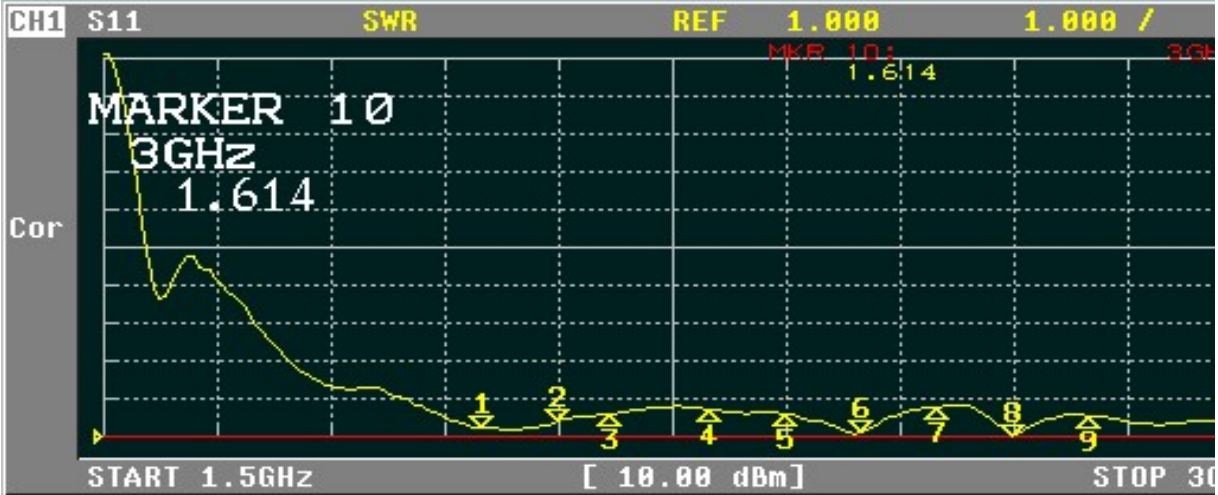
Parameter	Description
Antenna Type	External Antenna
Touch Type	Screw Type
Connector Type	N(Male)
Antenna Dimensions	370mm ±15
Antenna Color	Black
Operating Temperature Range	-30°C~+80°C
Storage Temperature Range	-30°C~+80°C

2. Appearance



3. Frequency





CH1 MARKER LIST

1:	2.000 000GHz	1.241
2:	2.100 000GHz	1.412
3:	2.170 000GHz	1.594
4:	2.300 000GHz	1.708
5:	2.400 000GHz	1.559
6:	2.500 000GHz	1.137
7:	2.600 000GHz	1.767
8:	2.700 000GHz	1.010
9:	2.800 000GHz	1.542



CH1 MARKER LIST

1:	2.000 000GHz	-18.379 dB
2:	2.100 000GHz	-15.012 dB
3:	2.170 000GHz	-12.696 dB
4:	2.300 000GHz	-11.519 dB
5:	2.400 000GHz	-13.297 dB
6:	2.500 000GHz	-24.263 dB
7:	2.600 000GHz	-11.093 dB
8:	2.700 000GHz	-40.441 dB
9:	2.800 000GHz	-19.204 dB



CH1 MARKER LIST

1:	2.000 000GHz	44.365 Ω	-9.496 Ω	8.380pF
2:	2.100 000GHz	47.051 Ω	-16.042 Ω	4.724pF
3:	2.170 000GHz	34.531 Ω	-12.101 Ω	6.060pF
4:	2.300 000GHz	40.971 Ω	22.066 Ω	1.526nH
5:	2.400 000GHz	63.226 Ω	-21.366 Ω	3.103pF
6:	2.500 000GHz	55.362 Ω	3.077 Ω	195.940pH
7:	2.600 000GHz	37.679 Ω	-22.199 Ω	2.757pF
8:	2.700 000GHz	50.523 Ω	-542.759mΩ	108.605pF
9:	2.800 000GHz	30.000 Ω	1.750 Ω	33.435pF