

# 1800Mhz Gooseneck Antenna

## MODEL: TH-1800-N(M)



### 1. GENERAL DESCRIPTION

Model No	P/N
TH-1800	TH1800-N(M)

Below is a table summarizing the antenna design specification.

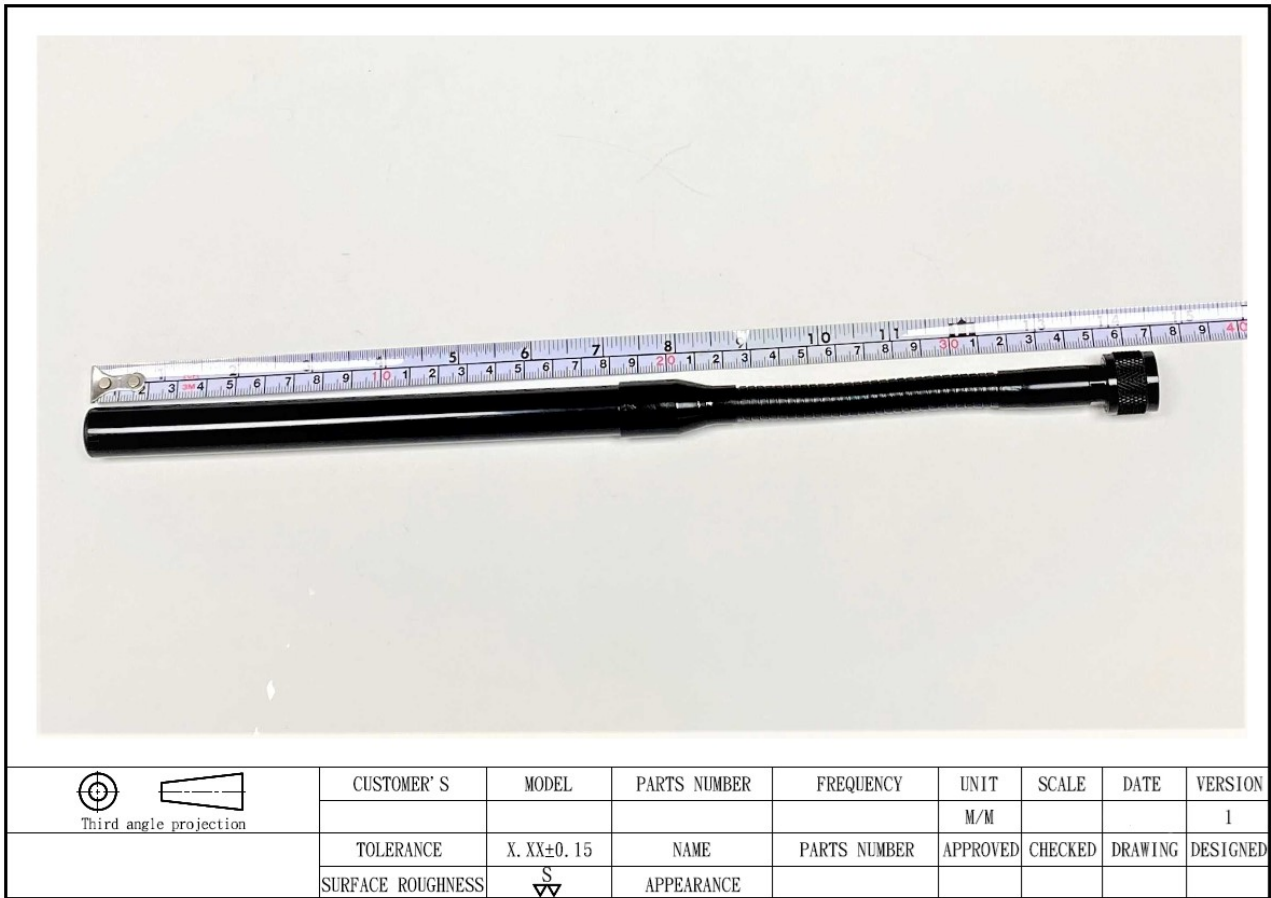
#### 1.1 Electrical Properties

Parameter	Description
Frequency Band	1800~1880 MHz
Nominal Impedance	50 ohm
Polarization	Vertical
Electrical Wave	Dipole
Return Loss	Please See Data-1
V.S.W.R	2.0 : 1
Gain	3db

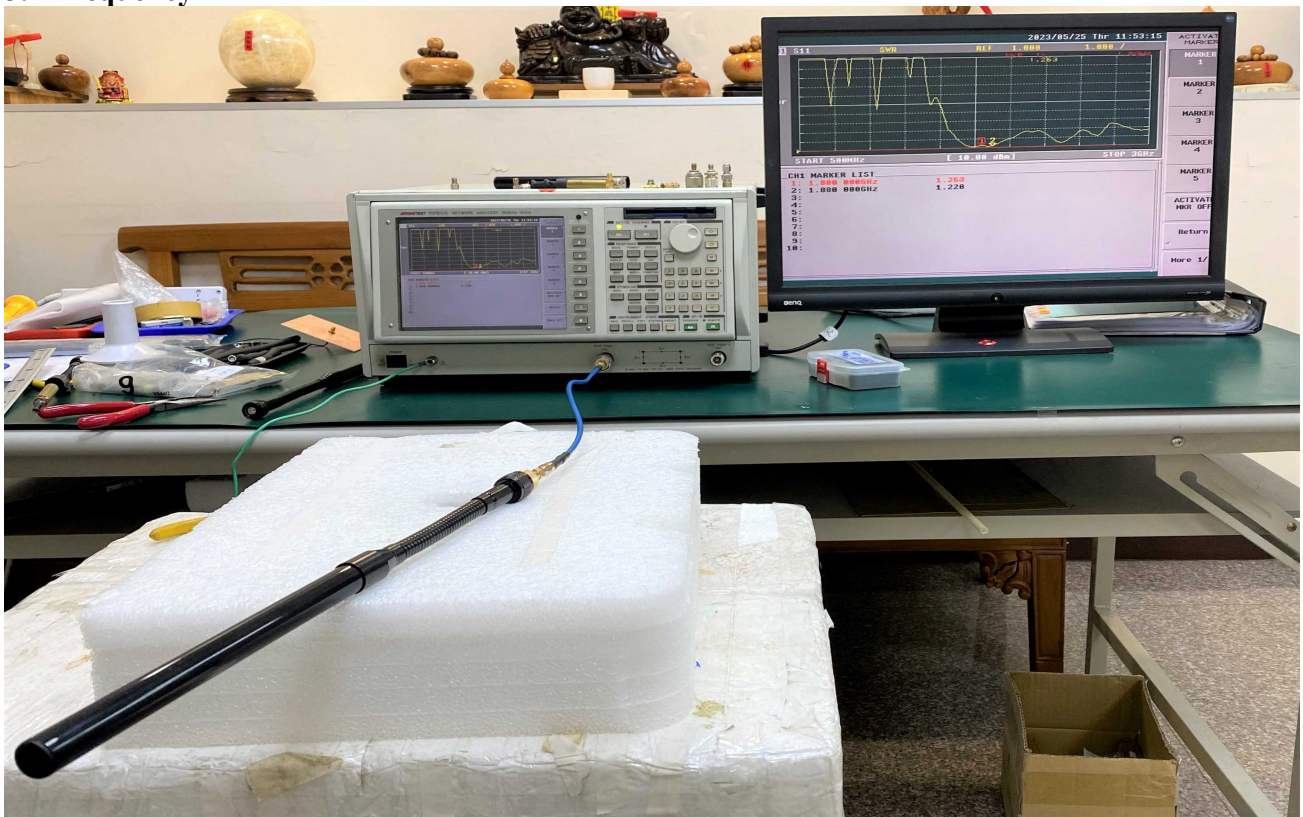
#### 1.2 Mechanical Properties

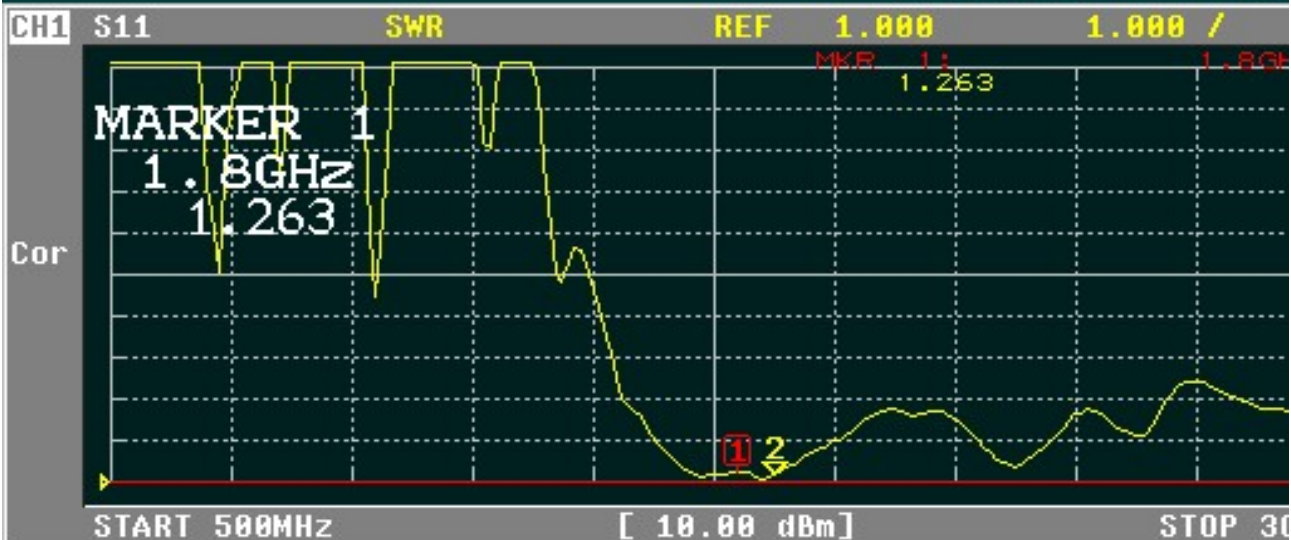
Parameter	Description
Antenna Type	External Antenna
Touch Type	Screw Type
Connector Type	N(Male)
Antenna Dimensions	370mm ±15
Antenna Color	Black
Operating Temperature Range	-30°C~+80°C
Storage Temperature Range	-30°C~+80°C

## 2. Appearance



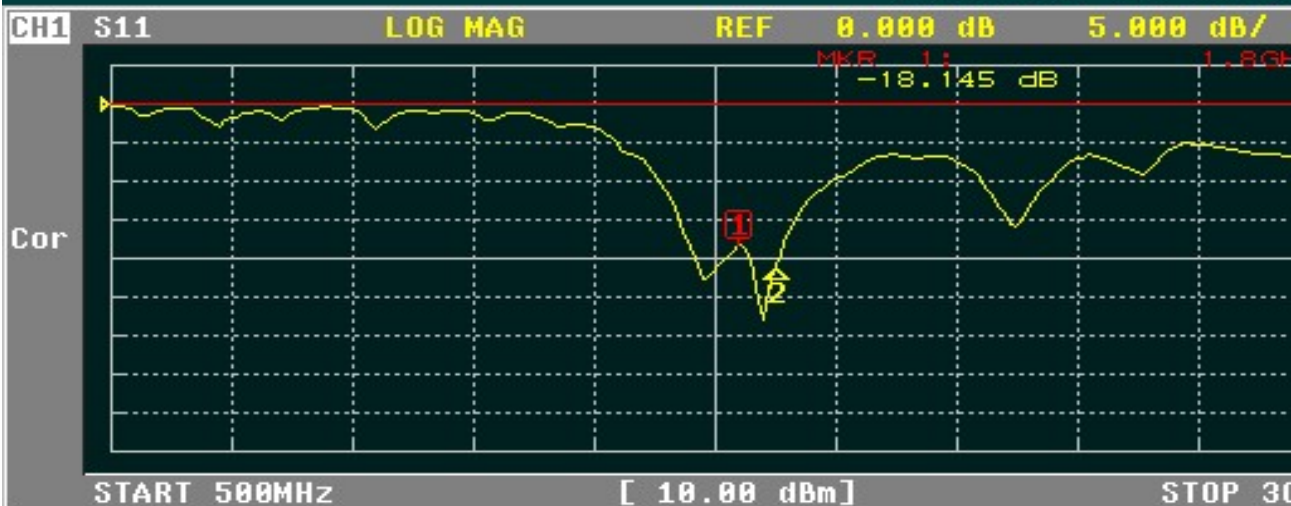
## 3. Frequency





CH1 MARKER LIST

1:	1.800 000GHz	1.266
2:	1.880 000GHz	1.208
3:		
4:		
5:		
6:		
7:		
8:		
9:		



CH1 MARKER LIST

1:	1.800 000GHz	-18.145 dB
2:	1.880 000GHz	-20.789 dB
3:		
4:		
5:		
6:		
7:		
8:		
9:		

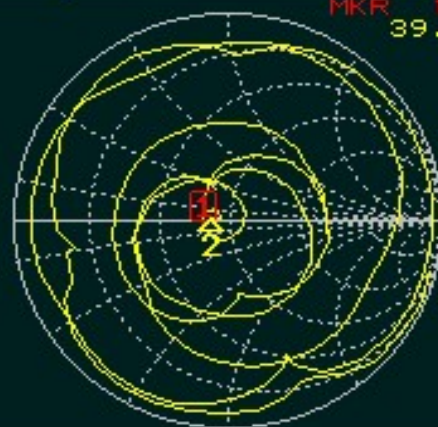
CH1 S11

SMITH(R+jX)

FS 1.000

MKR 1: 1.800 GHz  
39.527  $\Omega$  -3.105  $\Omega$ 

Cor



START 500MHz

[ 10.00 dBm]

STOP 30

## CH1 MARKER LIST

1:	1.800 000GHz	39.527 $\Omega$	-3.105 $\Omega$	28.472pF
2:	1.880 000GHz	41.789 $\Omega$	1.942 $\Omega$	164.451pH
3:				
4:				
5:				
6:				
7:				
8:				
9:				