

# 900Mhz Gooseneck Antenna

MODEL: TH-942-N(M)



## 1. GENERAL DESCRIPTION

Model No	P/N
TH-942	TH942-N(M)

Below is a table summarizing the antenna design specification.

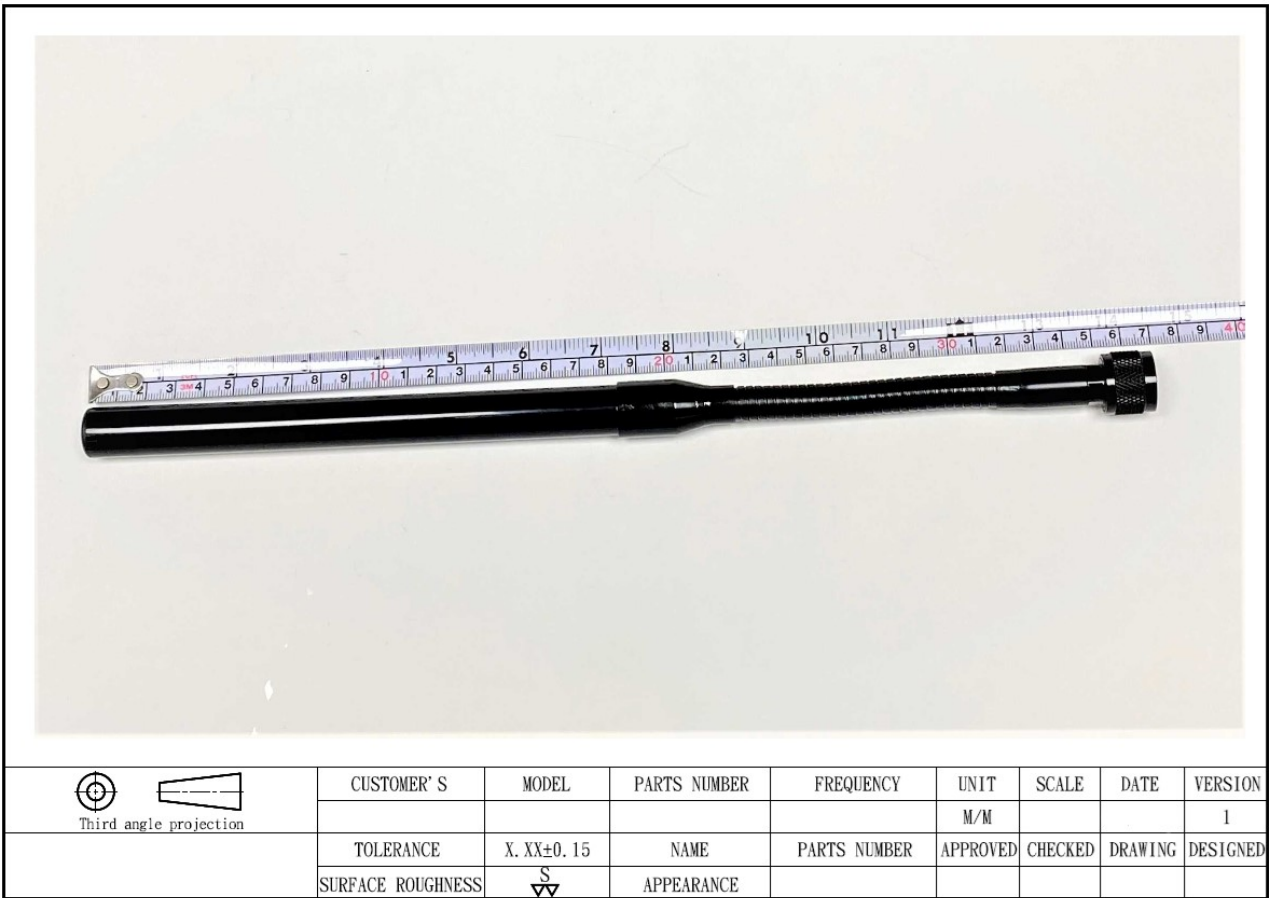
### 1.1 Electrical Properties

Parameter	Description
Frequency Band	920~965 MHz
Nominal Impedance	50 ohm
Polarization	Vertical
Electrical Wave	Dipole
Return Loss	Please See Data-1
V.S.W.R	2.0 : 1
Gain	3db

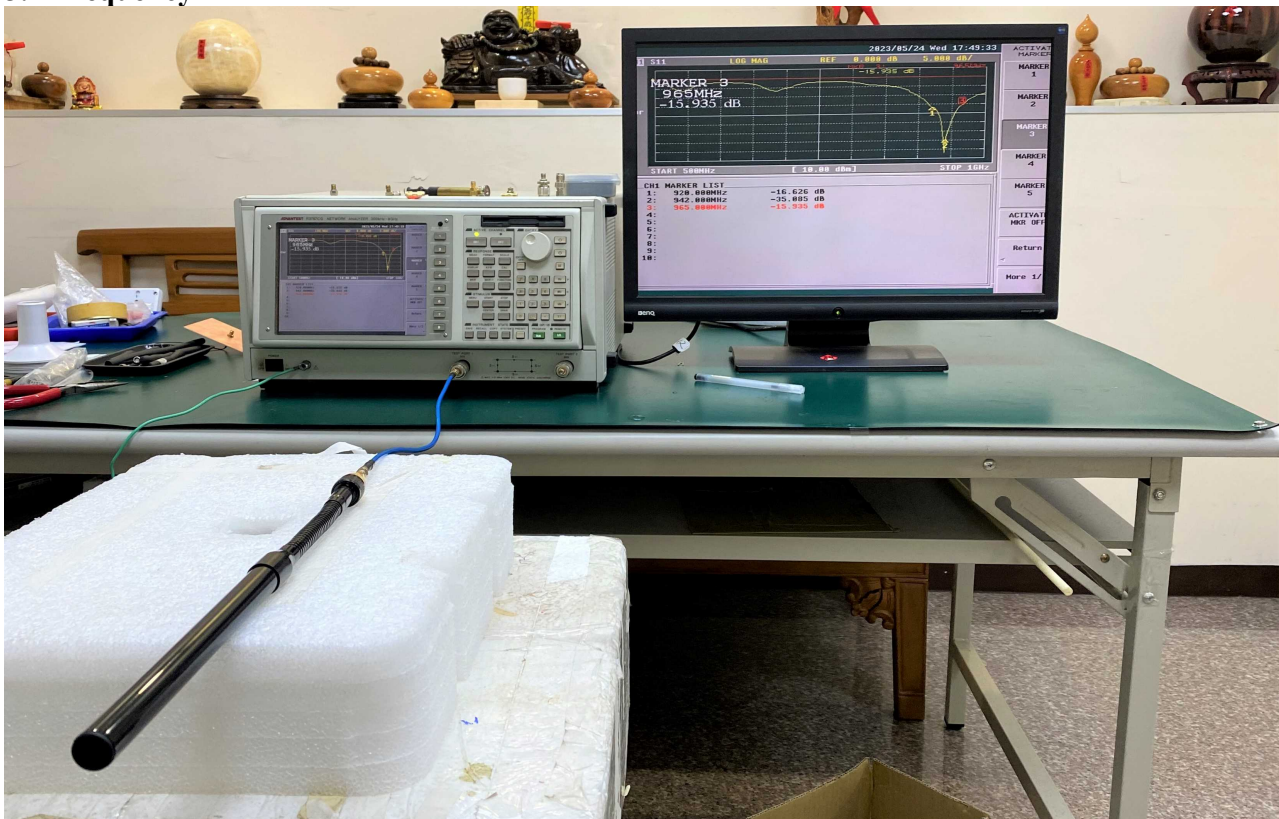
### 1.2 Mechanical Properties

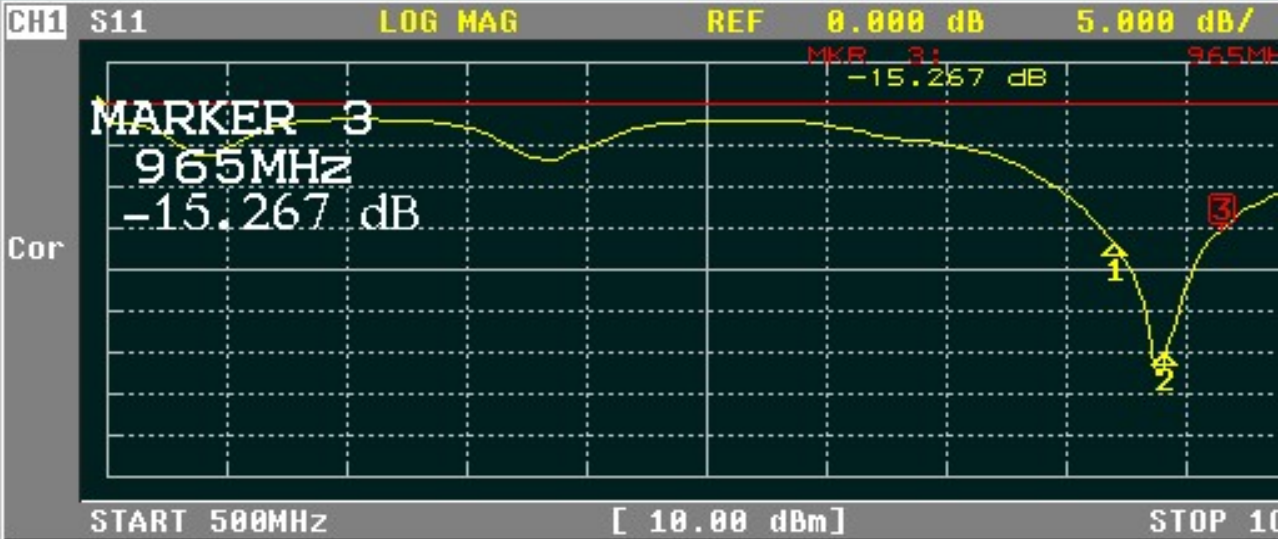
Parameter	Description
Antenna Type	External Antenna
Touch Type	Screw Type
Connector Type	N(Male)
Antenna Dimensions	370mm ±15
Antenna Color	Black
Operating Temperature Range	-30°C~+80°C
Storage Temperature Range	-30°C~+80°C

## 2. Appearance



## 3. Frequency





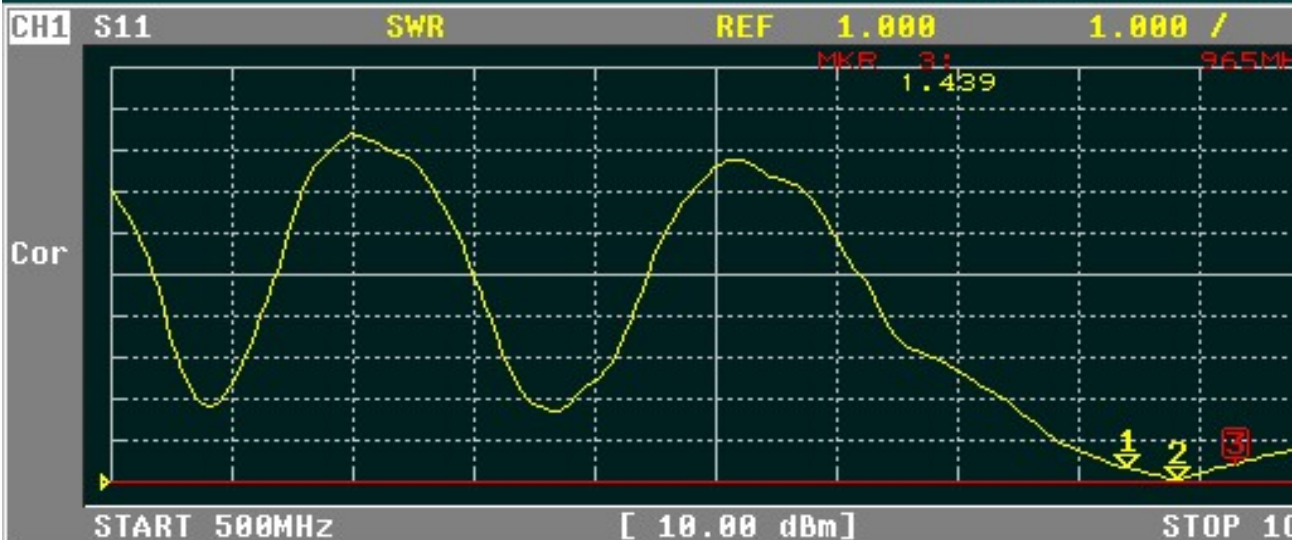
CH1 MARKER LIST

1:	920.000MHz	-16.892 dB
2:	942.000MHz	-30.125 dB
3:	965.000MHz	-15.267 dB
4:		
5:		
6:		
7:		
8:		
9:		



CH1 MARKER LIST

1:	920.000MHz	37.923 Ω	-4.483 Ω	38.587pF
2:	942.000MHz	49.951 Ω	-4.401 Ω	38.386pF
3:	965.000MHz	50.065 Ω	-18.073 Ω	9.125pF
4:				
5:				
6:				
7:				
8:				
9:				



CH1 MARKER LIST

1:	920.000MHz	1.333
2:	942.000MHz	1.080
3:	965.000MHz	1.439
4:		
5:		
6:		
7:		
8:		
9:		