

# 900Mhz Gooseneck Antenna

## MODEL: TH-915J-N(M)



### 1. GENERAL DESCRIPTION

Model No	P/N
TH-915J	TH915J-N(M)

Below is a table summarizing the antenna design specification.

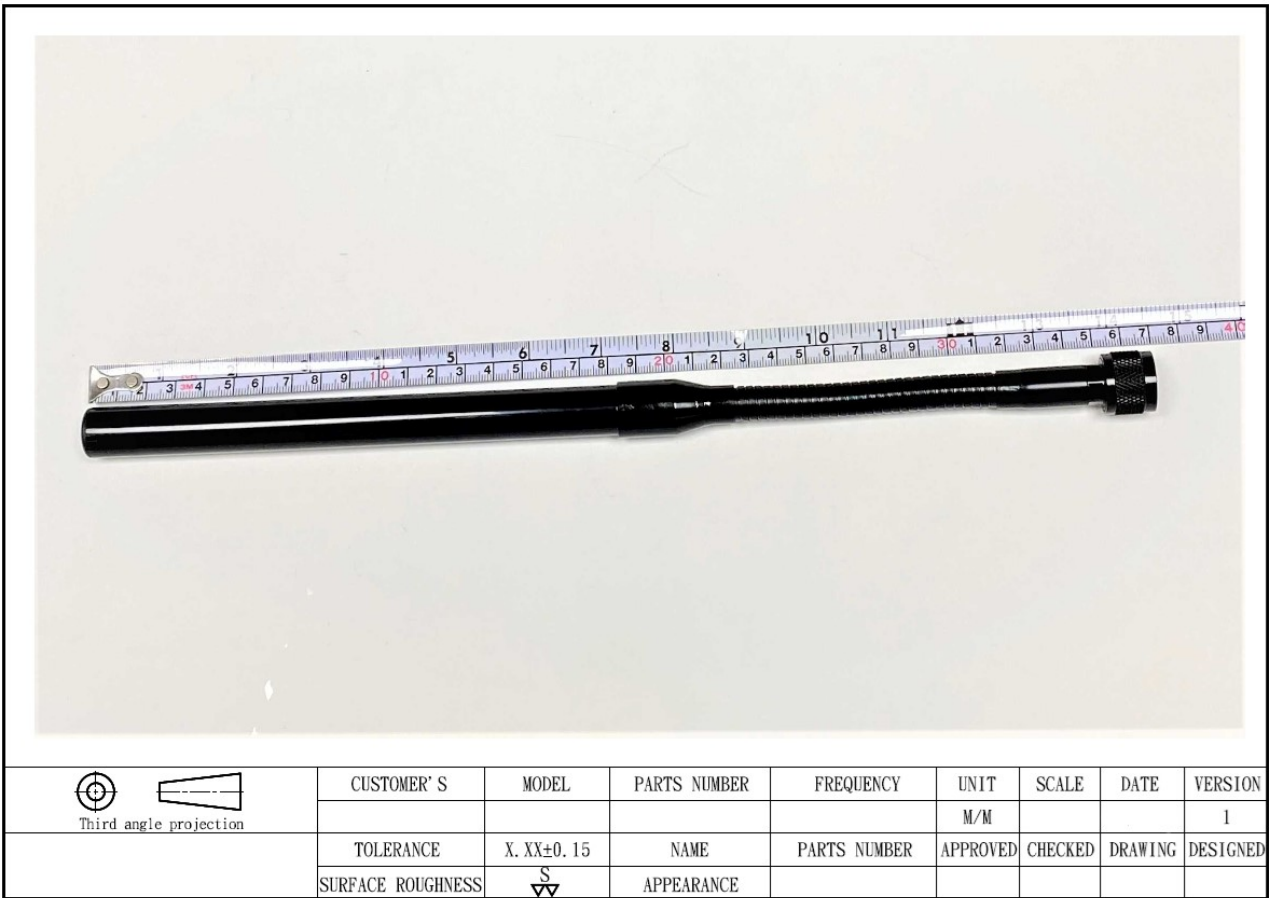
#### 1.1 Electrical Properties

Parameter	Description
Frequency Band	902~928 MHz
Nominal Impedance	50 ohm
Polarization	Vertical
Electrical Wave	Dipole
Return Loss	Please See Data-1
V.S.W.R	2.0 : 1
Gain	3db

#### 1.2 Mechanical Properties

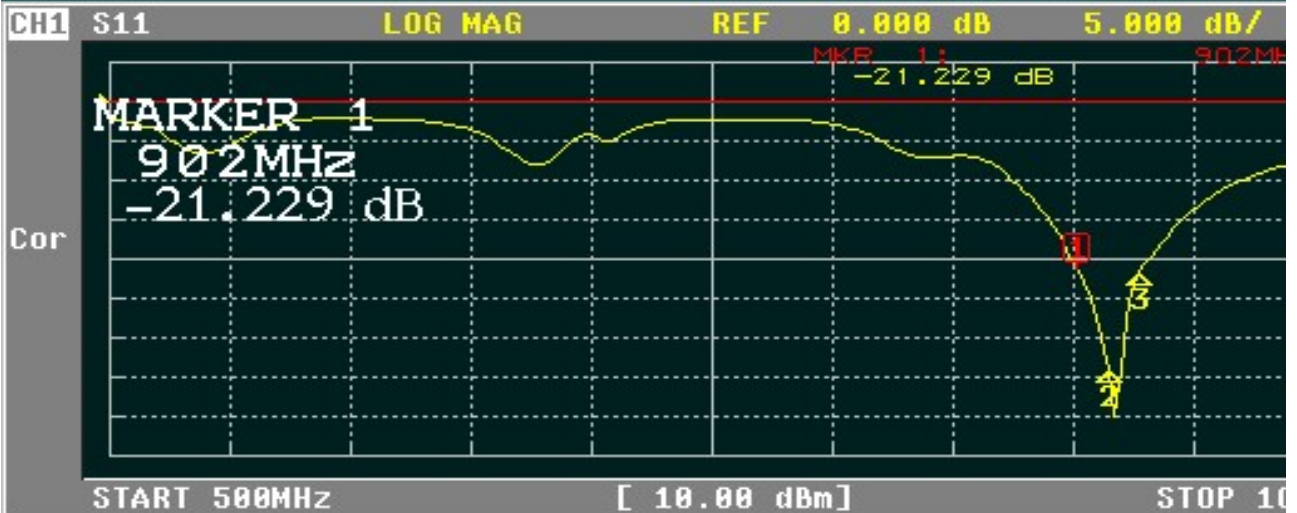
Parameter	Description
Antenna Type	External Antenna
Touch Type	Screw Type
Connector Type	N(Male)
Antenna Dimensions	370mm ±15
Antenna Color	Black
Operating Temperature Range	-30°C~+80°C
Storage Temperature Range	-30°C~+80°C

## 2. Appearance



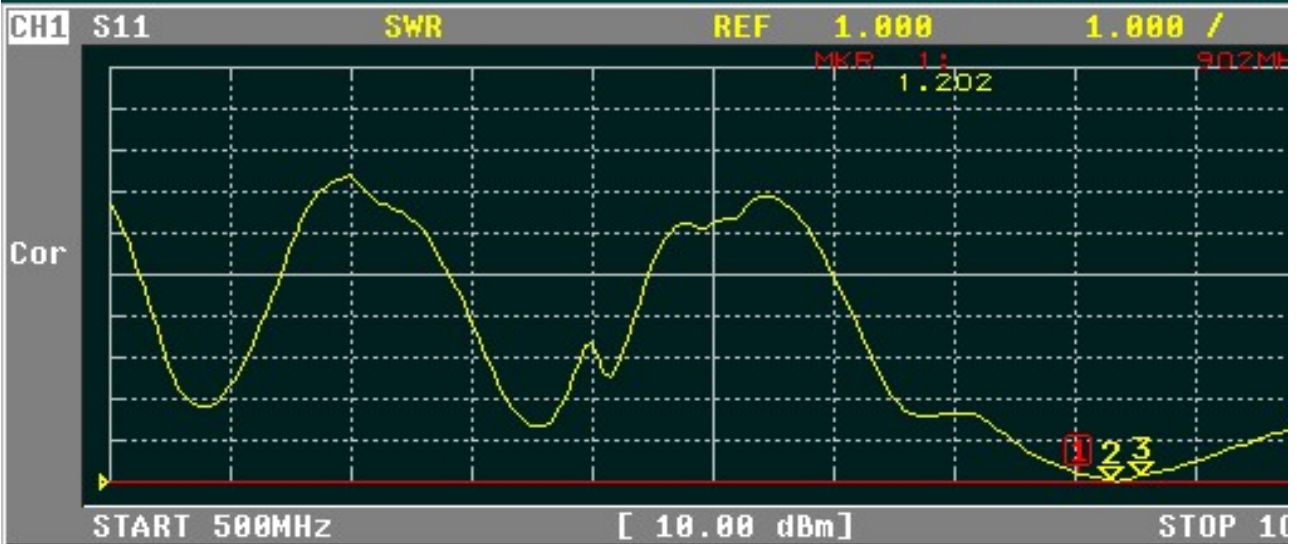
## 3. Frequency





CH1 MARKER LIST

1:	902.000MHz	-21.229 dB
2:	915.000MHz	-34.059 dB
3:	928.000MHz	-21.533 dB
4:		
5:		
6:		
7:		
8:		
9:		



CH1 MARKER LIST

1:	902.000MHz	1.202
2:	915.000MHz	1.040
3:	928.000MHz	1.168
4:		
5:		
6:		
7:		
8:		
9:		

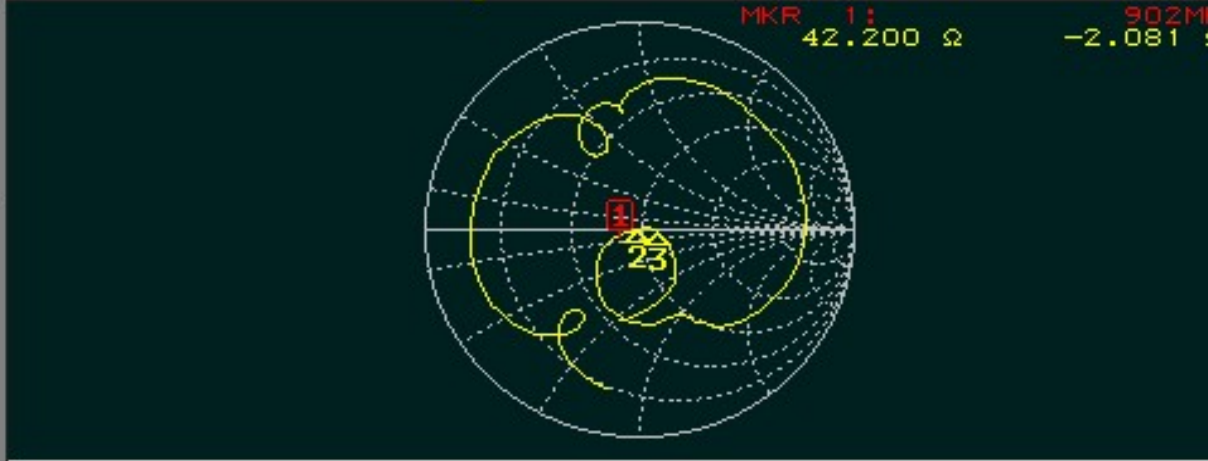
CH1 S11

SMITH(R+jX)

FS 1.000

MKR 1: 902MHz  
42.200 Ω -2.081 S

Cor



START 500MHz

[ 10.00 dBm ]

STOP 10

CH1 MARKER LIST

1:	902.000MHz	42.213 Ω	-2.077 Ω	84.921pF
2:	915.000MHz	48.587 Ω	-42.806mΩ	4.063nF
3:	928.000MHz	58.735 Ω	-1.422 Ω	120.534pF
4:				
5:				
6:				
7:				
8:				
9:				