

UHF Gooseneck Antenna

MODEL: TH-315F-N(M)



1. GENERAL DESCRIPTION

Model No	P/N
TH-315F	TH315F-N(M)

Below is a table summarizing the antenna design specification.

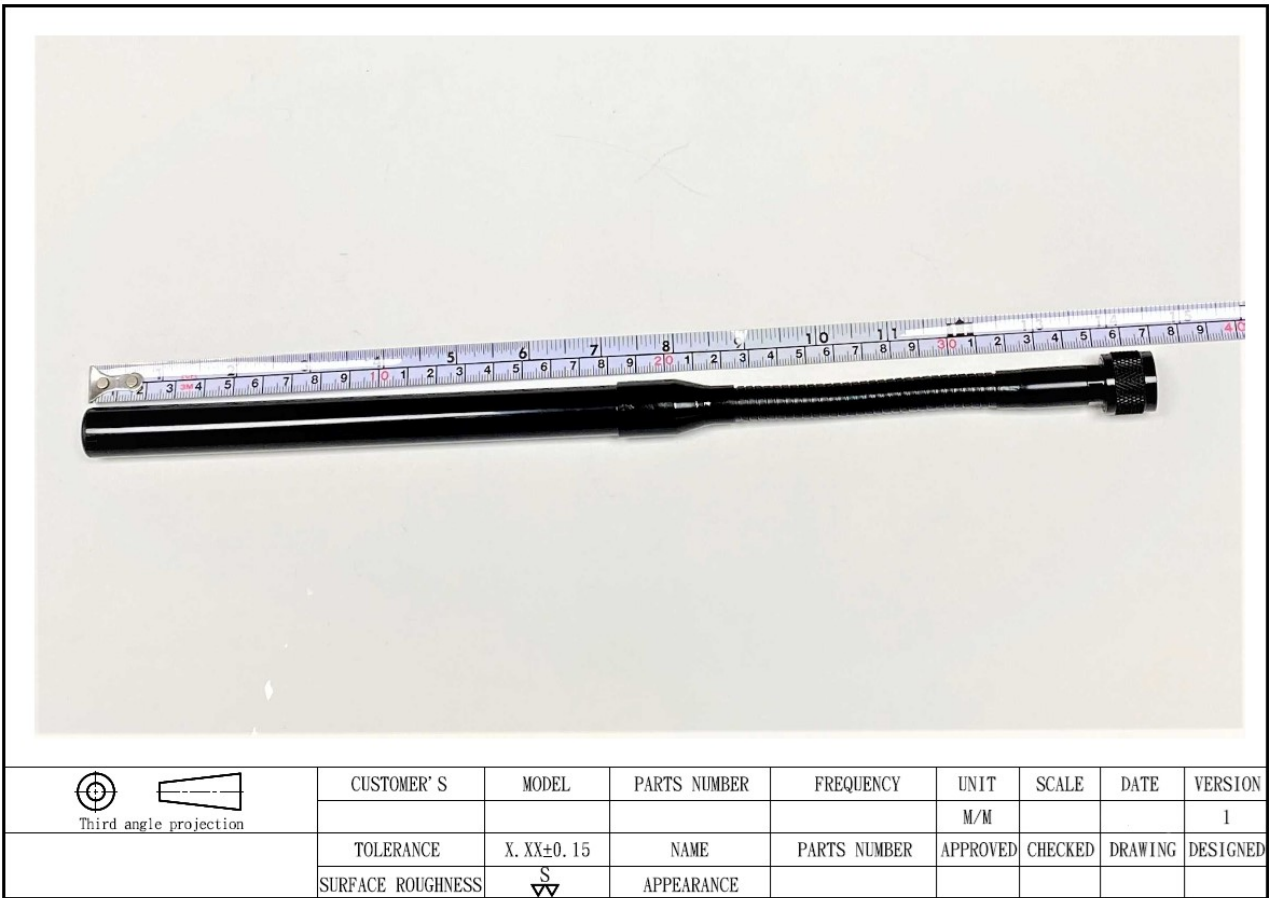
1.1 Electrical Properties

Parameter	Description
Frequency Band	315MHz
Nominal Impedance	50 ohm
Polarization	Vertical
Electrical Wave	Dipole
Return Loss	Please See Data-1
V.S.W.R	2.0 : 1
Gain	3db

1.2 Mechanical Properties

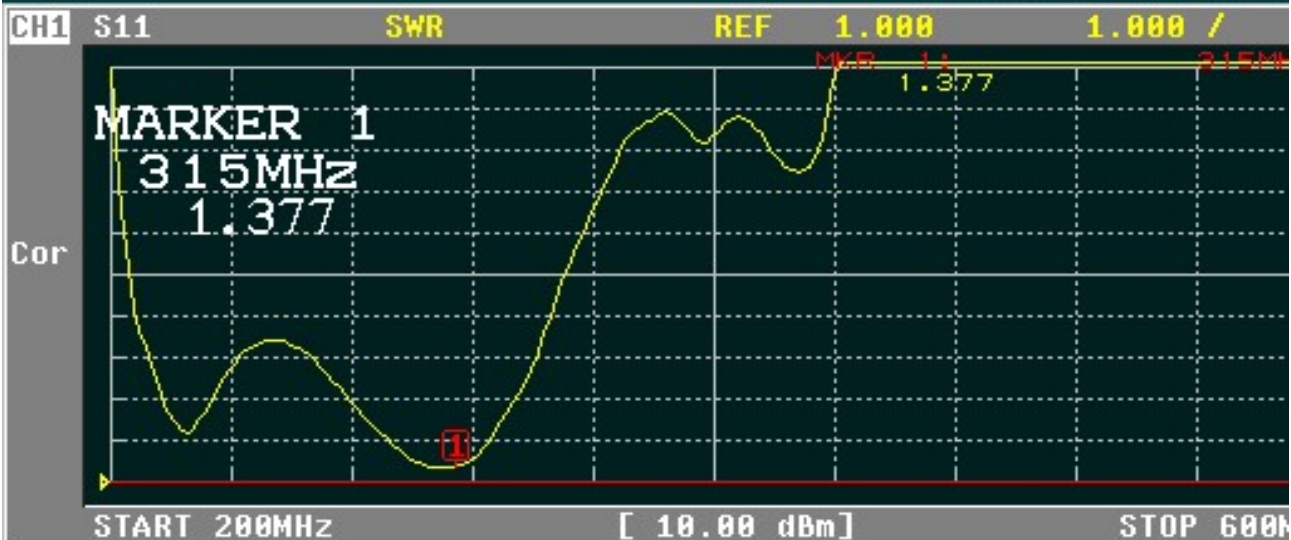
Parameter	Description
Antenna Type	External Antenna
Touch Type	Screw Type
Connector Type	N(Male)
Antenna Dimensions	370mm ±15
Antenna Color	Black
Operating Temperature Range	-30°C~+80°C
Storage Temperature Range	-30°C~+80°C

2. Appearance



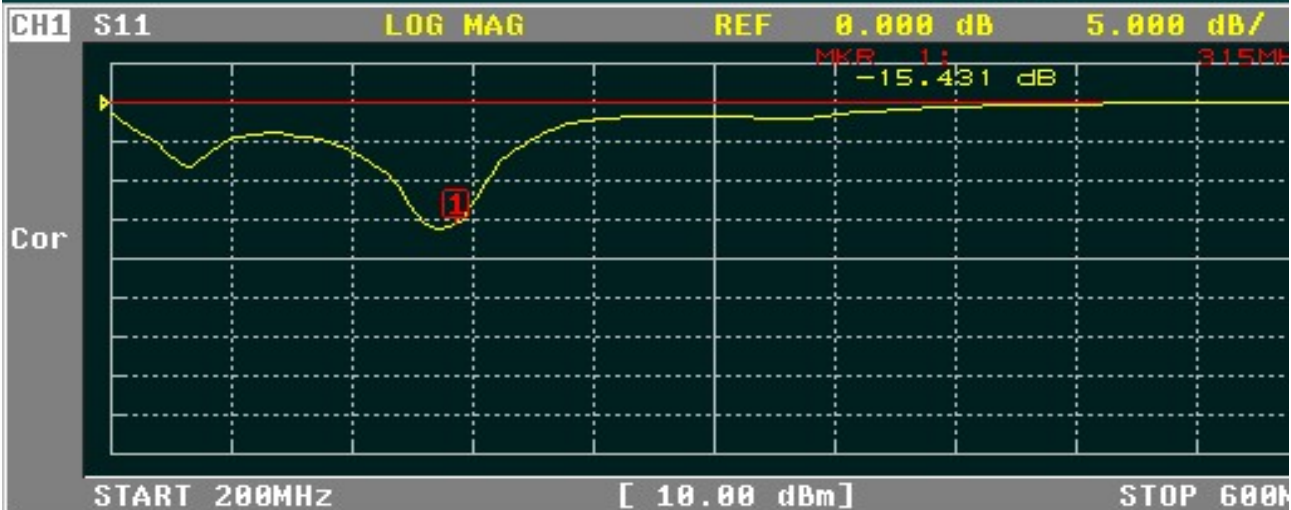
3. Frequency





CH1 MARKER LIST

1:	315.000MHz	1.377
2:		
3:		
4:		
5:		
6:		
7:		
8:		
9:		



CH1 MARKER LIST

1:	315.000MHz	-15.431 dB
2:		
3:		
4:		
5:		
6:		
7:		
8:		
9:		

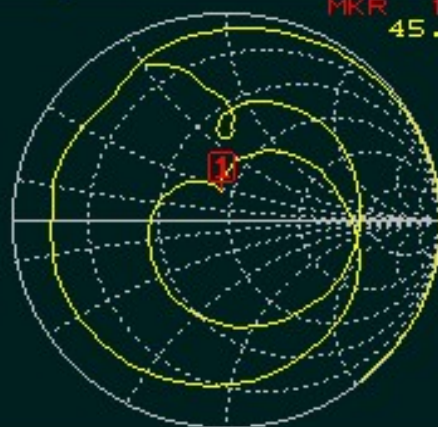
CH1 S11

SMITH(R+jX)

FS 1.000

MKR 1: 315MHz
45.564 Ω 14.374 Ω

Cor



START 200MHz

[10.00 dBm]

STOP 600MHz

CH1 MARKER LIST

1:	315.000MHz	45.564 Ω	14.374 Ω	7.262nH
2:				
3:				
4:				
5:				
6:				
7:				
8:				
9:				