

OUTSIDE S BAND ANTENNA

MODEL: TH-2050

Fiber Glass Antenna



Specifications:

Frequency range:	2000~2100Mhz
Gain:	6dBi
V.S.W.R:	<2.0
Impedence:	50 ohm
Connector:	N Type Female
Dimension:	756mm +/-10 x OD20mm
Weight:	0.76Kg
Polarization :	vertical
Power handling :	50W
Colour :	white
Rated wind velocity :	60m/s
Working Temperature :	-40~60°C
Lightning Protection :	Direct Ground

* This specification is subject to change without prior notice

1. APPEARANCE:

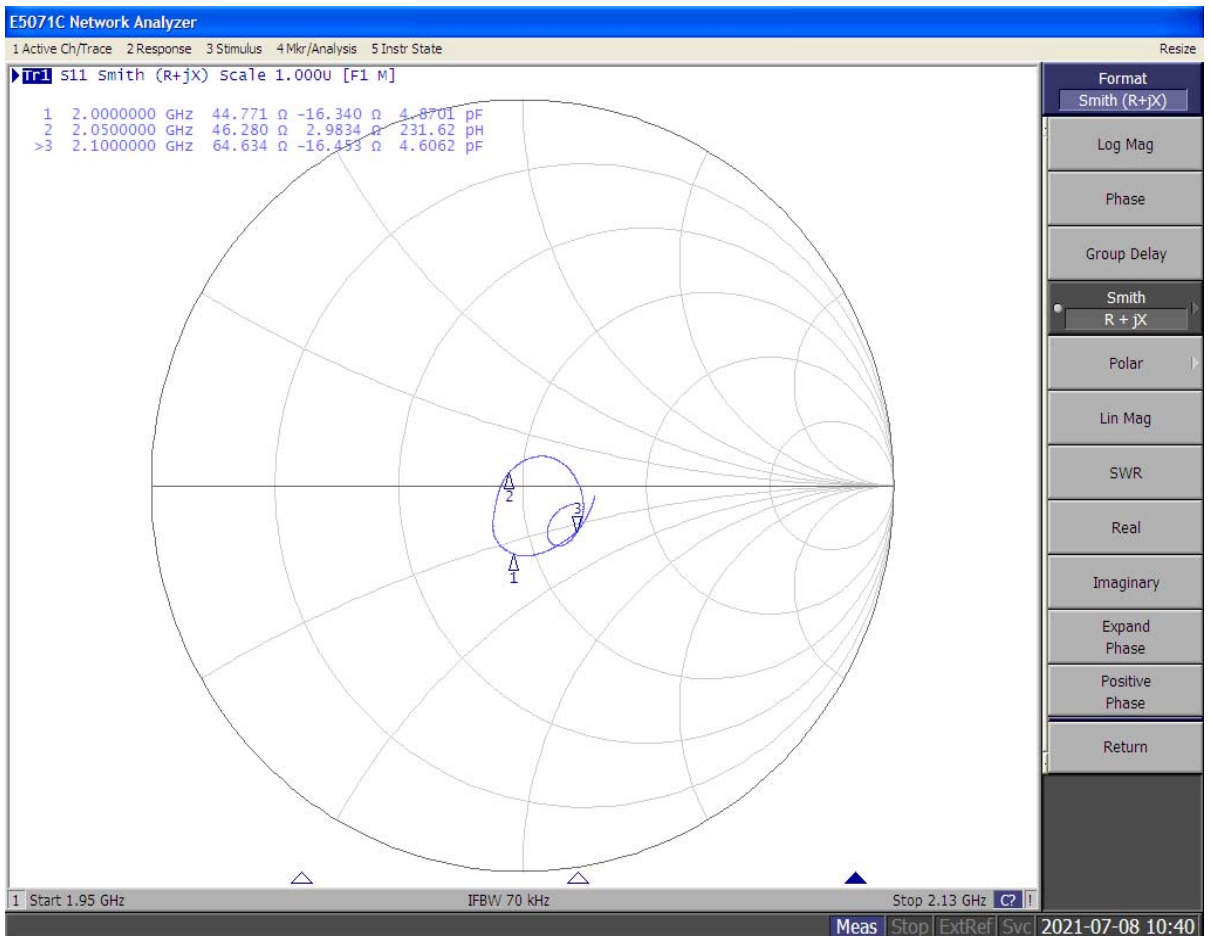
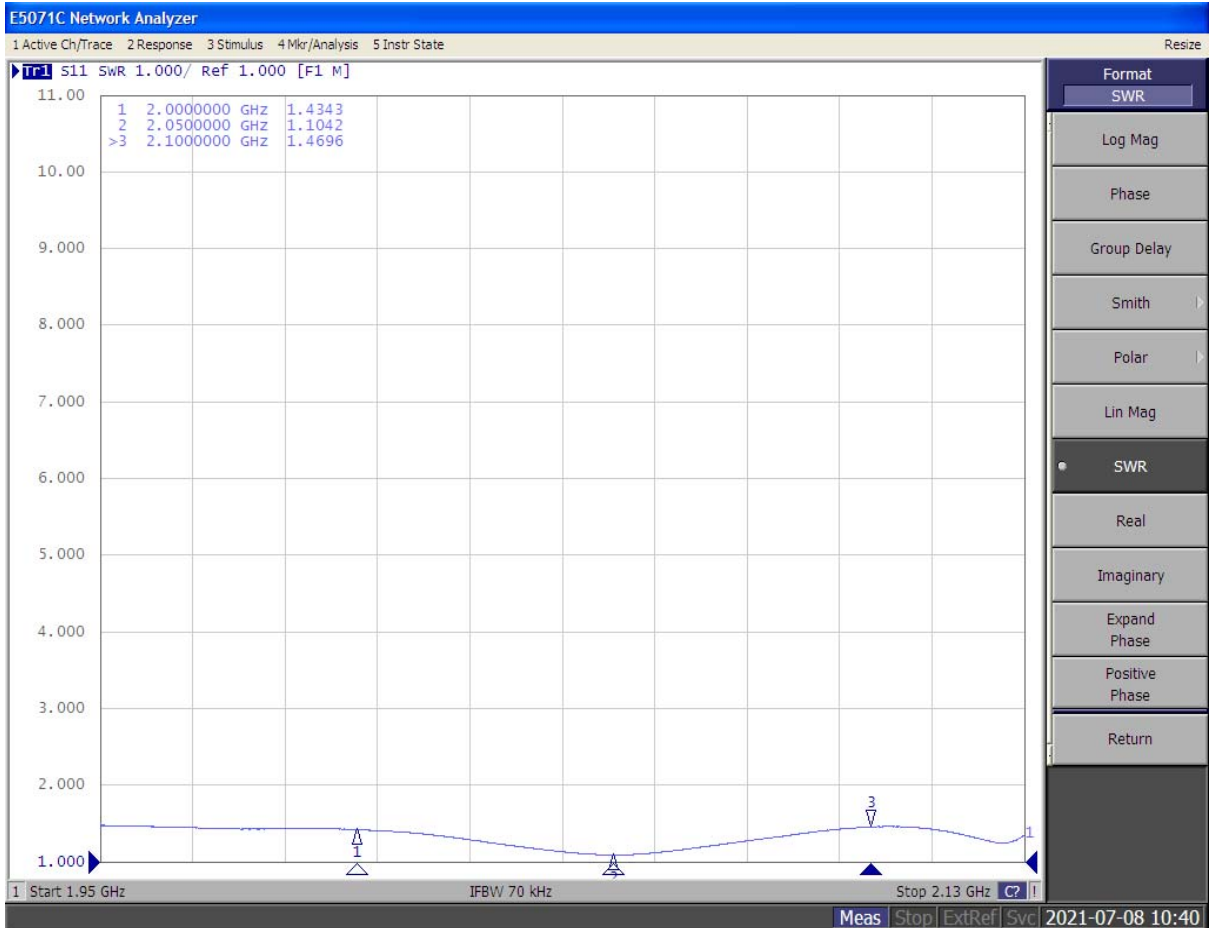
NO.	NAME	Q.	TY
01	Body	01	
02	Cap	01	
03	Connecting vopper pipe(Stainless steel)	01	
04	Hexagonal nut(Stainless steel)	02	
05	Screw(Stainless steel)	01	
06	Clip retaining(Aluminium)	02	
07	U-Circlip(Stainless steel)	02	
08	Screw(Stainless steel)	02	
09	Round iron washer(Stainless steel)	04	
10	Hexagonal nut(Stainless steel)	05	
11	Hexagonal plate hand(iron)	01	
12	N (Female)	01	

CUSTOMER'S	MODEL	PARTS NUMBER	FREQUENCY	UNIT	SCALE	DATE	VERSION
			2000-2100MHz	M/M		20210708	1
TOLERANCE	X. XX±0. 15	NAME	PARTS NUMBER	APPROVED	CHECKED	DRAWING	DESIGNED
SURFACE ROUGHNESS	\sqrt{S}	APPEARANCE	TH-2050				

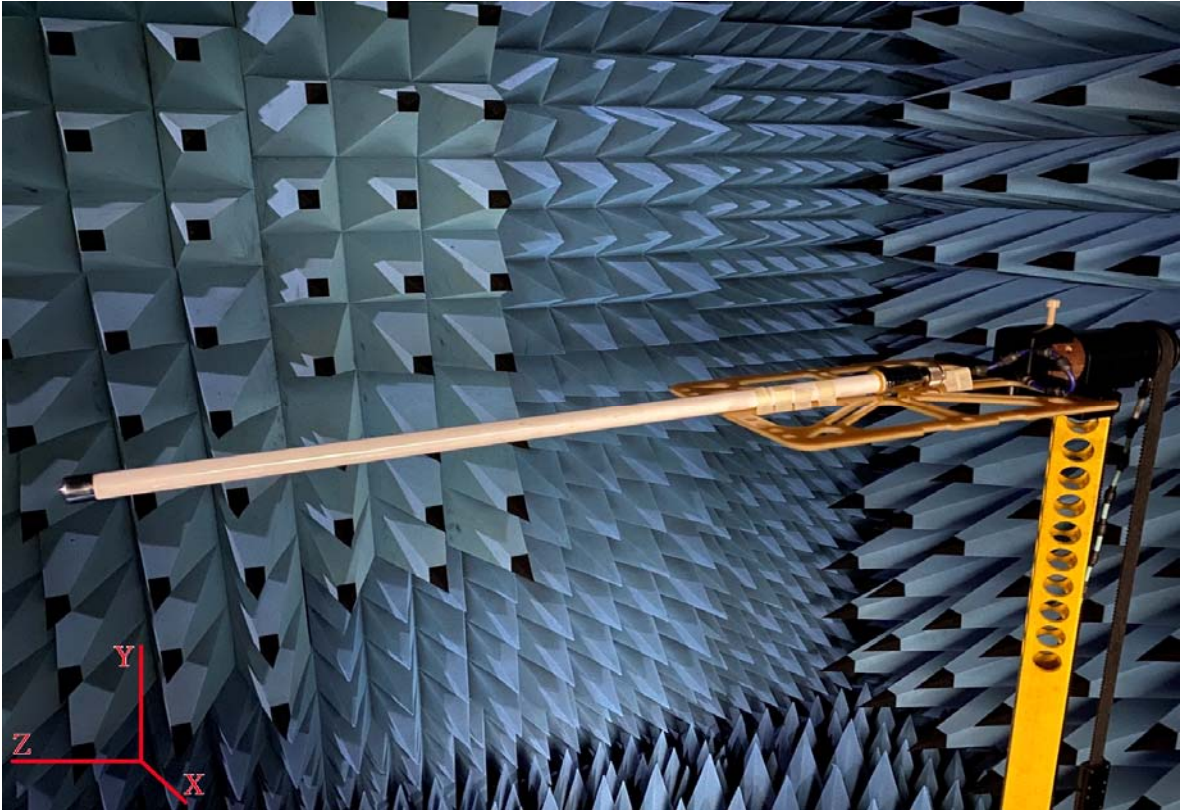
Third angle projection

2.FREQUENCY:

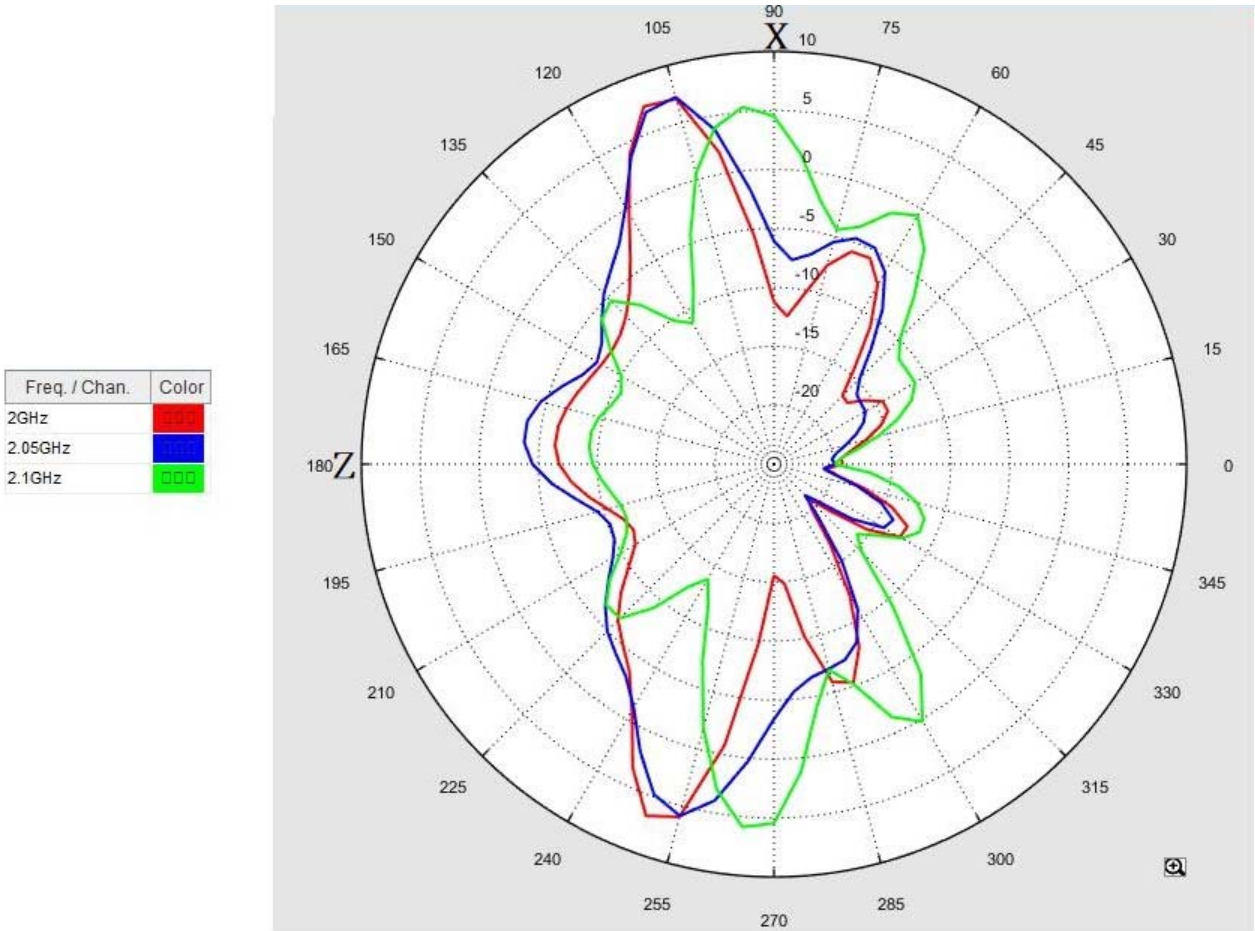




3.TEST ENVIORNMENT:

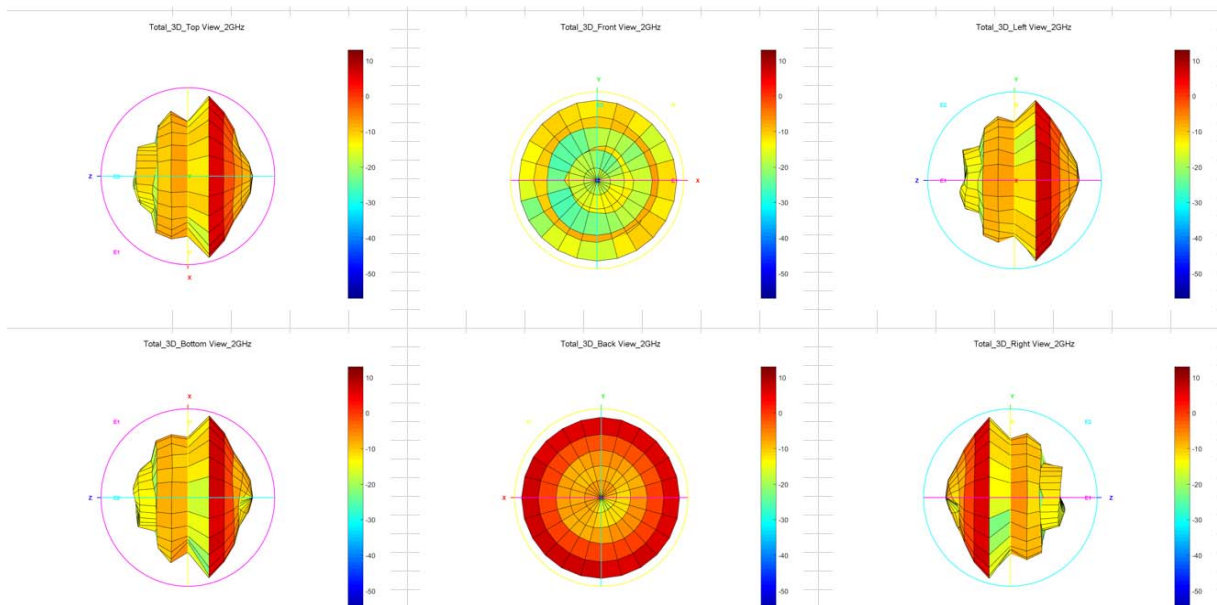


4.RADIATION PATTERN:

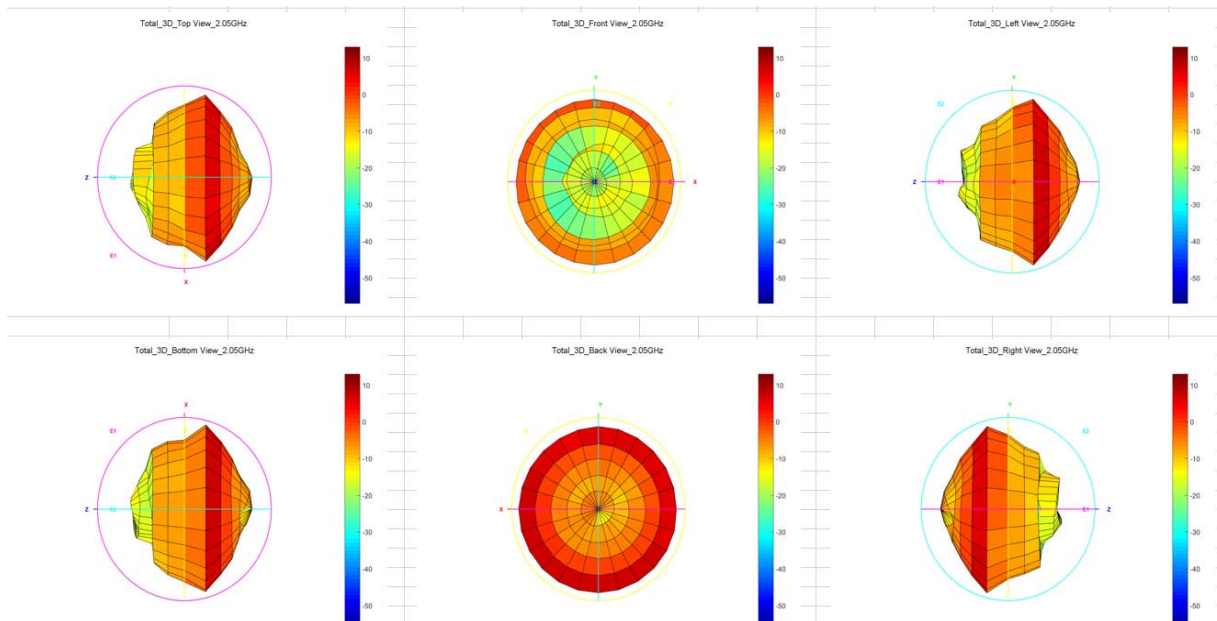


Frequency	2GHz	2.05GHz	2.1GHz
Horizontal+Vertical			
Efficiency (%)	70.31	79.07	72.78
Gain (dBi)	7.07	7.23	6.5
Horizontal			
H Efficiency (%)	69.34	78.16	72.44
H Gain (dBi)	7.04	7.21	6.5
Vertical			
V Efficiency (%)	0.89	0.91	0.34
V Gain (dBi)	-12.55	-11.97	-18.11

2.0 Ghz :



2.05Ghz :



2.1Ghz :

