

GSM Antenna

MODEL: TH-70

GSM850/GSM900/DCS1800/PCS1900/3G 2170



1.. GENERAL DESCRIPTION

Model No	P/N
TH70	TH70-SMA(M) or TH70-SMB(M)

Below is a table summarizing the antenna design specification.

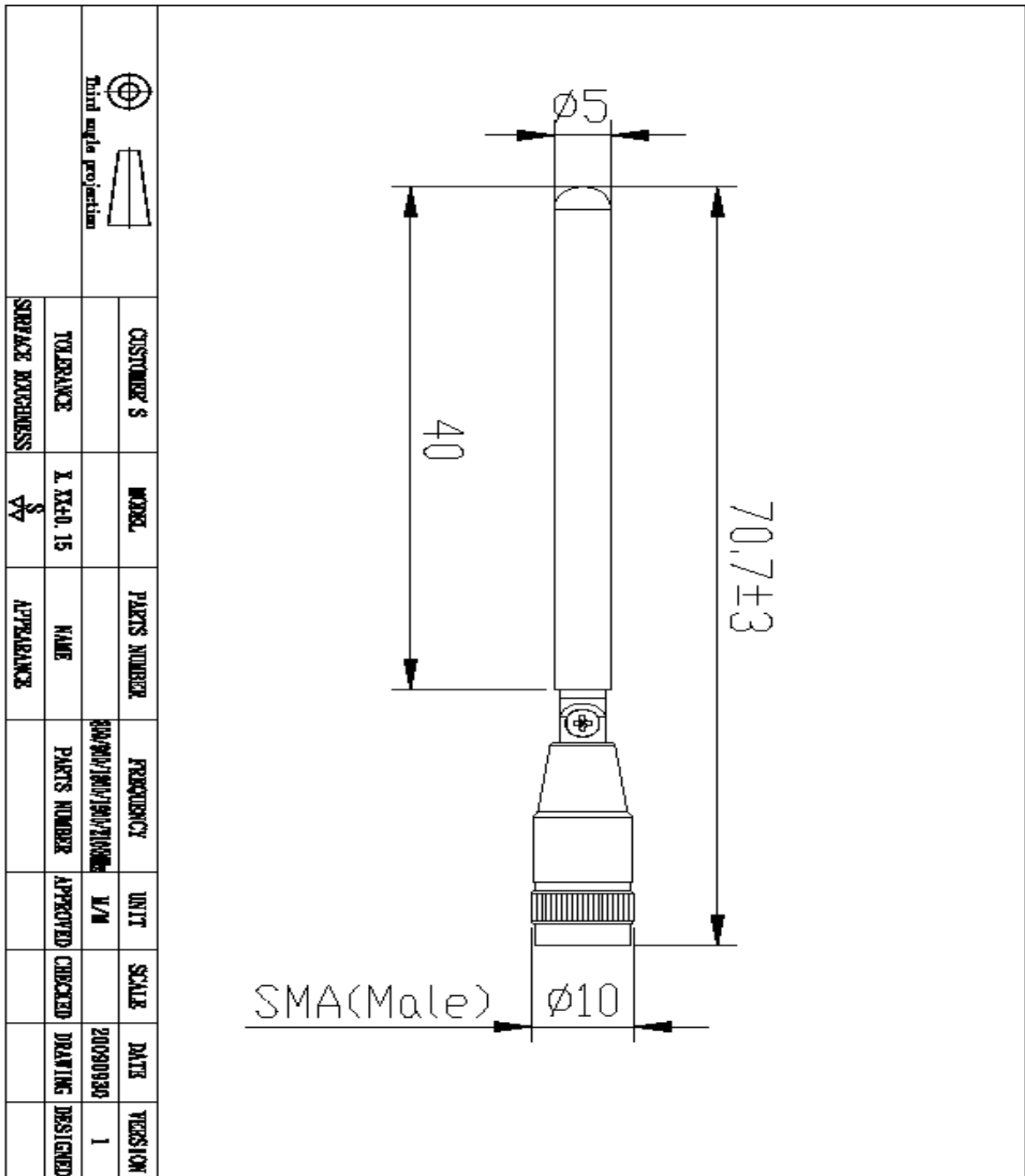
1.1 Electrical Properties

Parameter	Description
Frequency Band	800/900/1800/1900/2170MHz
Nominal Impedance	50 ohm
Polarization	Vertical
Electrical Wave	1 /4 λ
Admitted Power radiation	1W
V.S.W.R	2.5:1
Antenna Average Gain	0 dBi
Note: Gain includes the cable loss	

1.2 Mechanical Properties

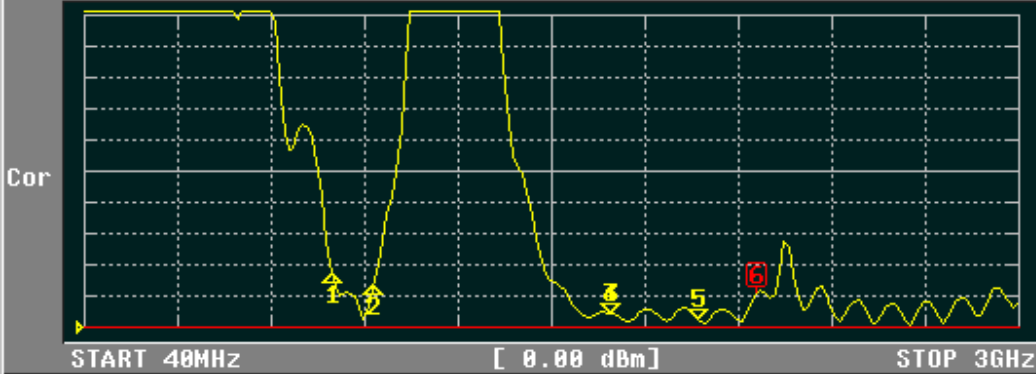
Parameter	Description
Antenna Type	External Antenna
Material	PVC
Touch Type	Screw Type

Connector Type	SMA (Male) or SMB (SP)
Antenna Dimensions	71.2mm±2
Antenna Color	Black
Operating Temperature Range	-20°C~+60°C
Storage Temperature Range	-30°C~+70°C



2009/09/24 Thr 18:25:48

CH1 RFL SWR MKR 6: 2.17GHz
REF 1.000 1.000 / 2.072



CH1 MARKER LIST

1:	824.000MHz	2.775
2:	960.000MHz	2.390
3:	1.710 000GHz	1.428
4:	1.710 000GHz	1.429
5:	1.990 000GHz	1.249
6:	2.170 000GHz	2.068
7:		
8:		
9:		
10:		

CAL

NORMALIZE (THRU)

NORMALIZE (SHORT)

CAL MENUS

CORRECT

ON OFF

INTERPOLATE

ON OFF

PORT EXTENSION

Z0 VALUE

More 1/2