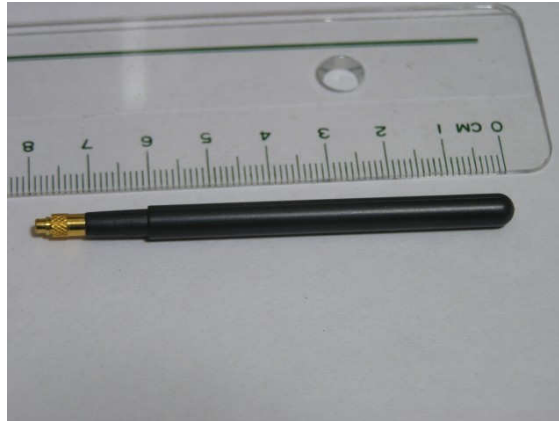


GSM Antenna

MODEL: TH-61

GSM850/GSM900/DCS1800/PCS1900



Specifications:

Frequency range:	GSM/850E	824~894MHz
	GSM	880~960MHz
	DCS	1710~1880MHz
	PCS	1850~1990MHz
Gain:	0~3 dBi	
V.S.W.R:	6.0:1	
Impedence:	50 ohm	
Connector:	MMCX180	
Dimension:	78.7mm x 5.5mm(Dia)	
Weight:	2g (With Connector)	

* This specification is subject to change without prior notice

