

# GSM/LTE ANTENNA

## MODEL: GSM-680

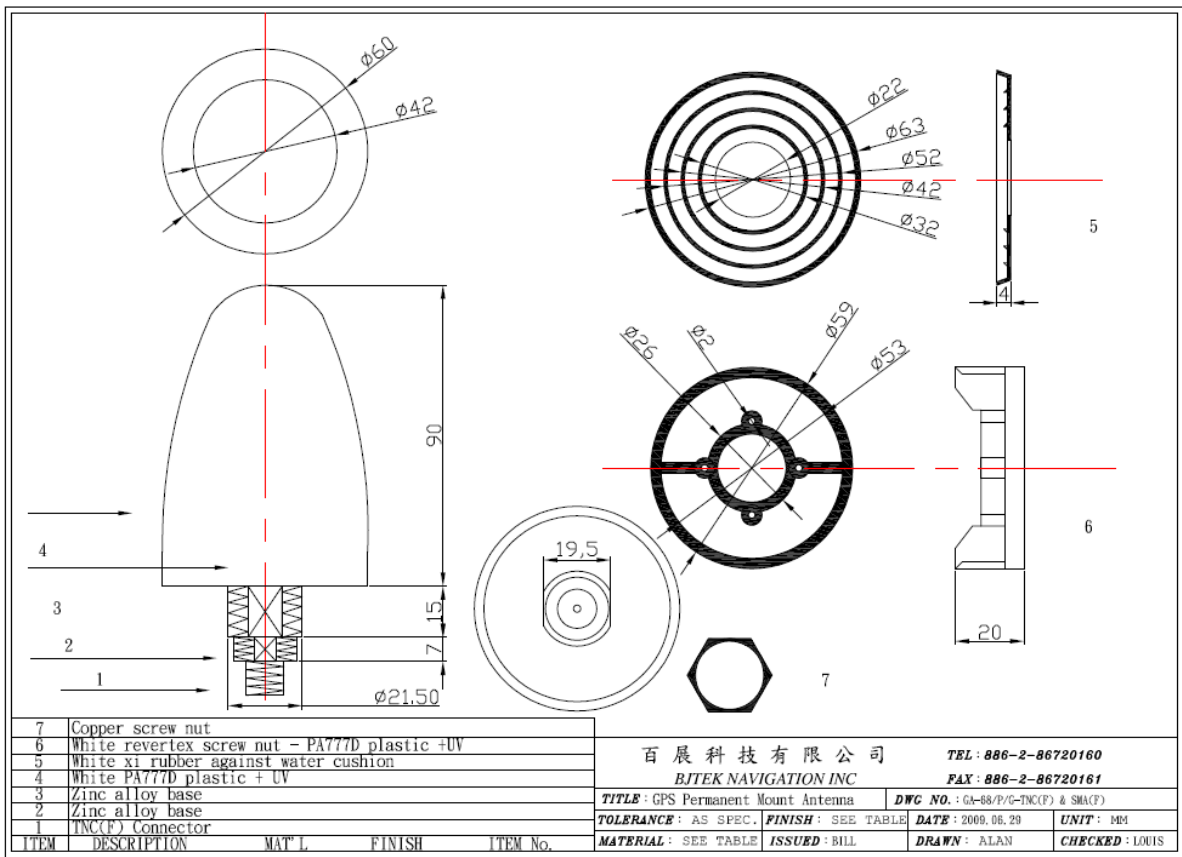
Uses Indoor/outdoor-wireless AP or Cellular Phone Signal Booster

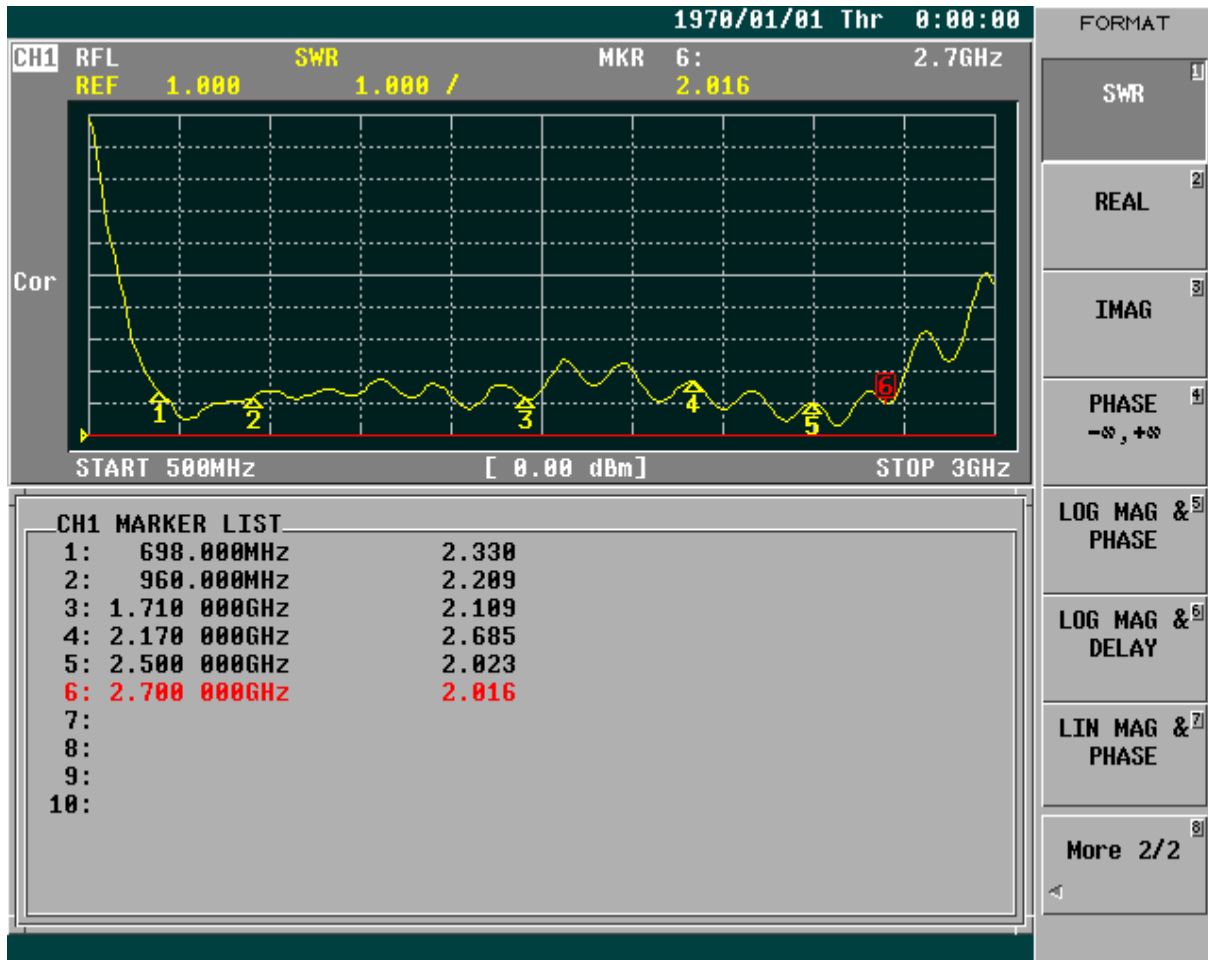
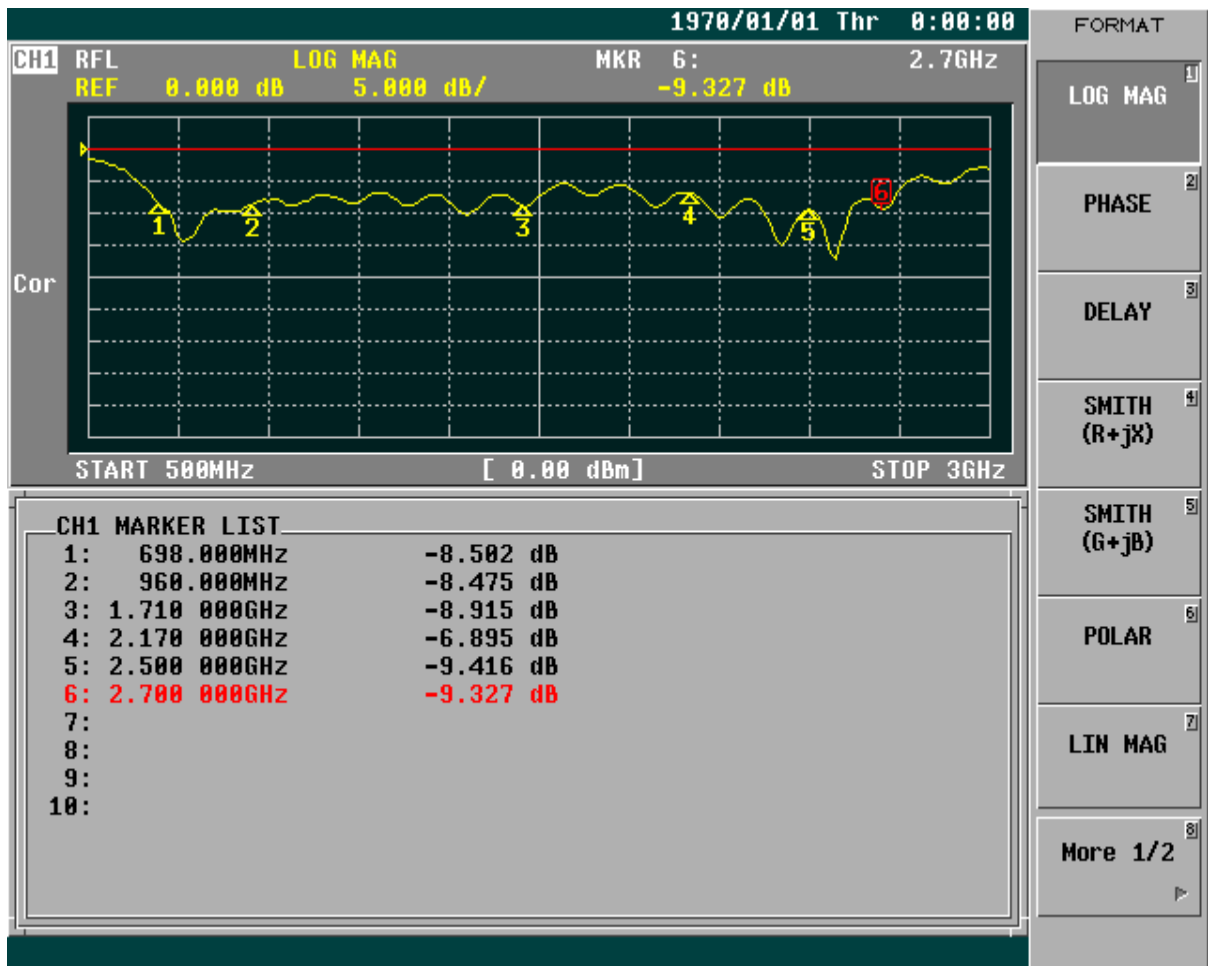


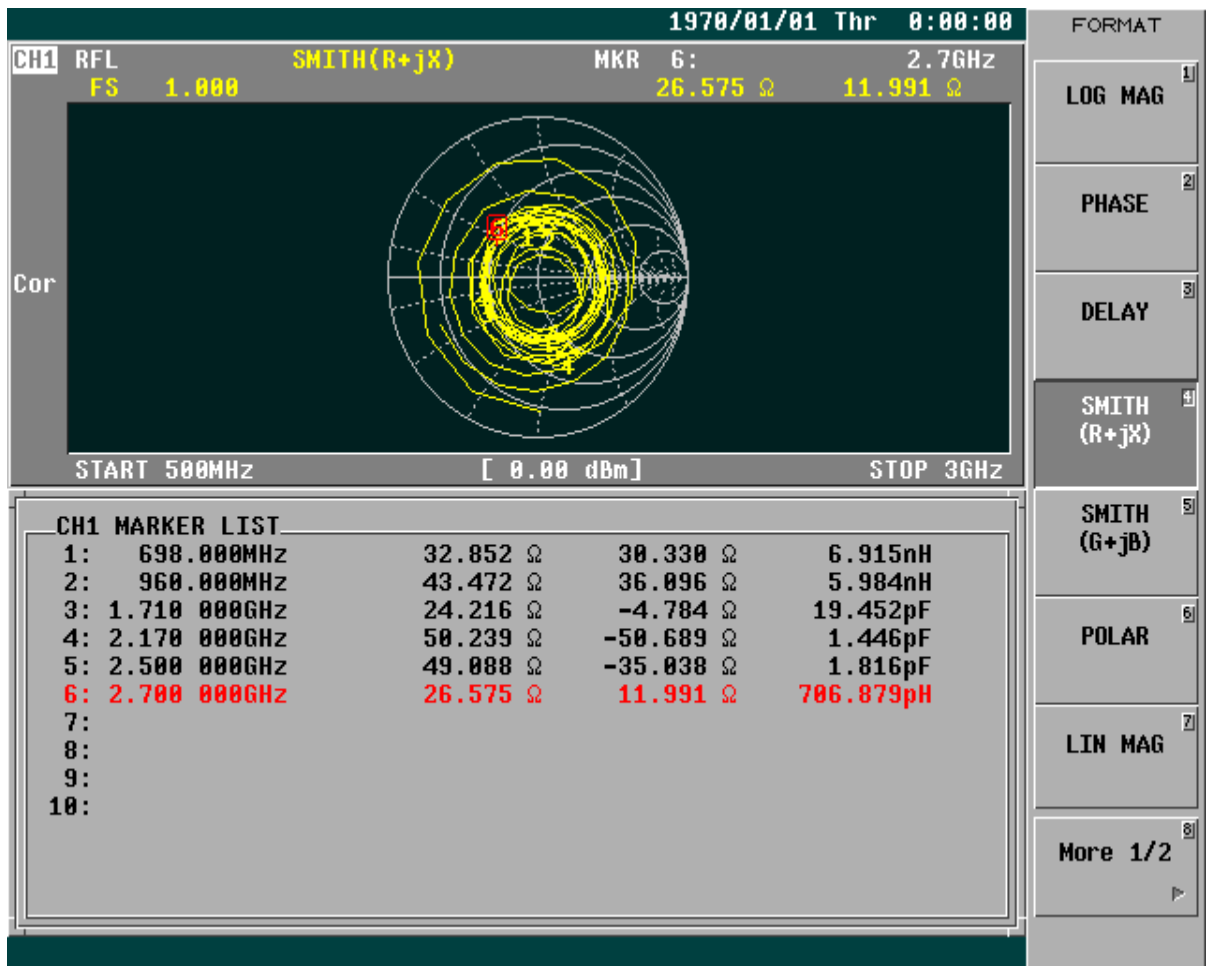
### Specifications:

Frequency range:	700~2700 Mhz
Gain:	0-3dBi
V.S.W.R:	<3.5 ( ON 320x 240mm GND )
Impedence:	50 ohm
Cable & Connector:	SMA(F) & SMA(M)-0.5M-FME(F) CABLE
Dimension:	60mm(Dia.) x 140mm(H)
Weight:	180g ( with 0.5M & Accessories )
Polarization :	vertical
Power handling :	10W
Colour :	white
Rated wind velocity :	60m/s
Working Temperature :	-40~85°C
Mounting Function	Ceiling Mount
Water Resistance	100% waterproof , IPX8

\* This specification is subject to change without prior notice

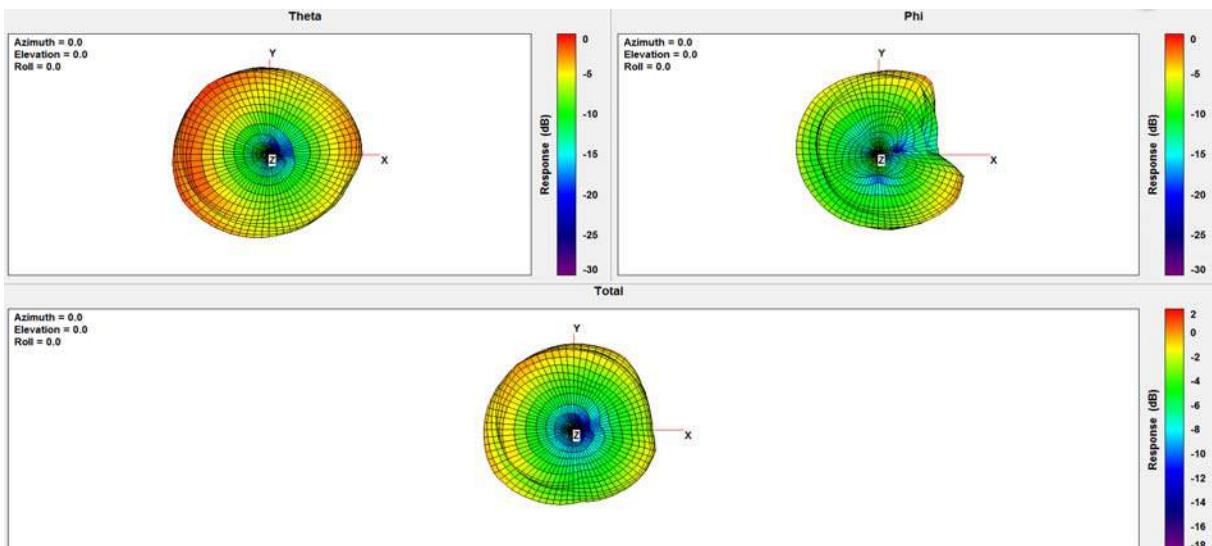


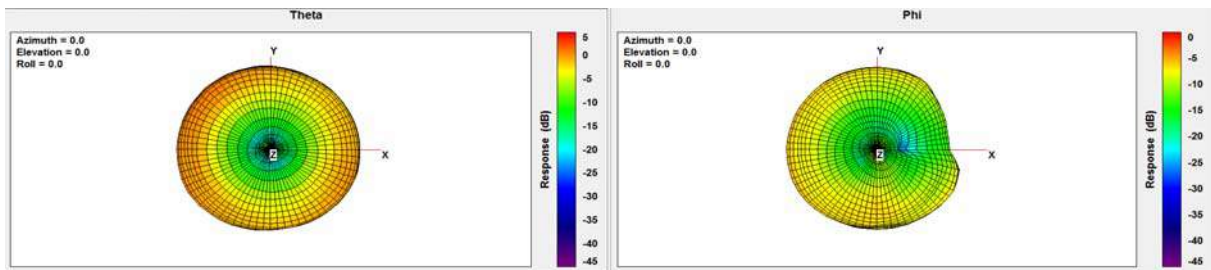




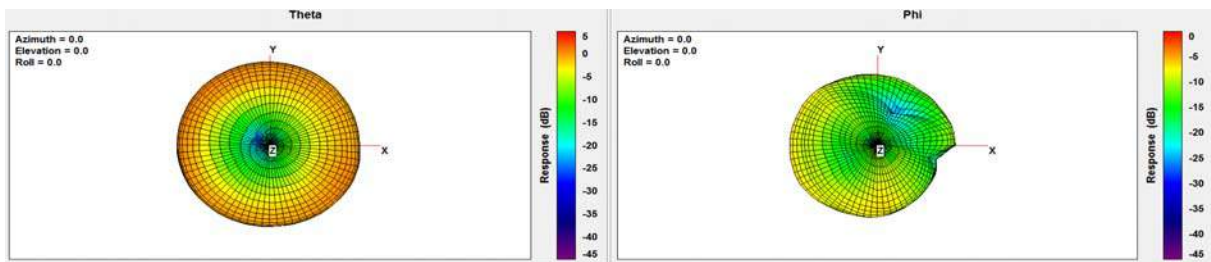
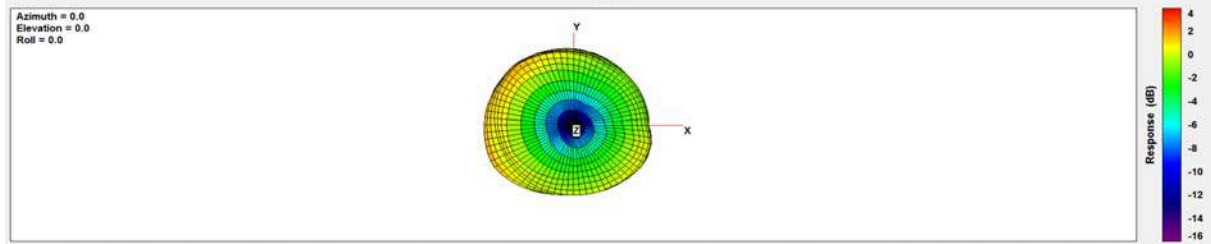
Frequency (MHz)	704	710	716	734	740	746	751	756	777	782	787
Peak Gain (dBi)	1.49	1.48	1.43	1.45	1.57	1.70	1.84	1.92	2.03	1.94	1.86
Efficiency (%)	59.57	60.66	60.61	62.01	63.20	65.50	67.40	69.76	75.81	75.47	75.23
Frequency (MHz)	791	806	815	821	824	830	832	836	845	847	849
Peak Gain (dBi)	1.83	2.13	2.10	2.06	2.06	1.97	1.95	1.87	1.85	1.79	1.74
Efficiency (%)	75.88	83.74	82.98	82.06	82.45	82.55	82.54	81.77	80.34	79.38	78.50
Frequency (MHz)	860	862	869	875	880	881	890	894	900	915	925

Peak Gain (dBi)	1.61	1.58	1.40	1.28	1.20	1.12	1.11	1.15	1.11	1.33	1.35
Efficiency (%)	74.99	74.46	72.38	71.55	70.89	70.56	70.89	71.29	71.40	73.07	73.25
<b>Frequency (MHz)</b>	<b>940</b>	<b>960</b>	<b>1710</b>	<b>1750</b>	<b>1755</b>	<b>1785</b>	<b>1805</b>	<b>1840</b>	<b>1850</b>	<b>1880</b>	<b>1882</b>
Peak Gain (dBi)	1.46	1.33	1.38	1.38	1.40	1.58	1.90	2.47	2.58	2.83	2.87
Efficiency (%)	72.16	68.80	64.15	61.28	61.13	59.67	61.78	66.04	66.02	66.77	66.85
<b>Frequency (MHz)</b>	<b>1910</b>	<b>1920</b>	<b>1930</b>	<b>1950</b>	<b>1962</b>	<b>1980</b>	<b>1990</b>	<b>2110</b>	<b>2132</b>	<b>2140</b>	<b>2155</b>
Peak Gain (dBi)	2.99	3.11	3.15	3.29	3.37	3.42	3.40	1.97	1.91	1.87	1.91
Efficiency (%)	68.40	69.97	70.66	73.53	75.93	78.16	78.40	61.23	59.90	58.73	59.02
<b>Frequency (MHz)</b>	<b>2170</b>	<b>2305</b>	<b>2345</b>	<b>2390</b>	<b>2500</b>	<b>2535</b>	<b>2570</b>	<b>2620</b>	<b>2655</b>	<b>2690</b>	
Peak Gain (dBi)	2.02	2.38	2.24	2.14	2.73	3.01	2.91	2.44	1.96	1.78	
Efficiency (%)	60.74	73.84	70.25	70.19	69.13	71.21	70.52	62.46	57.63	52.33	

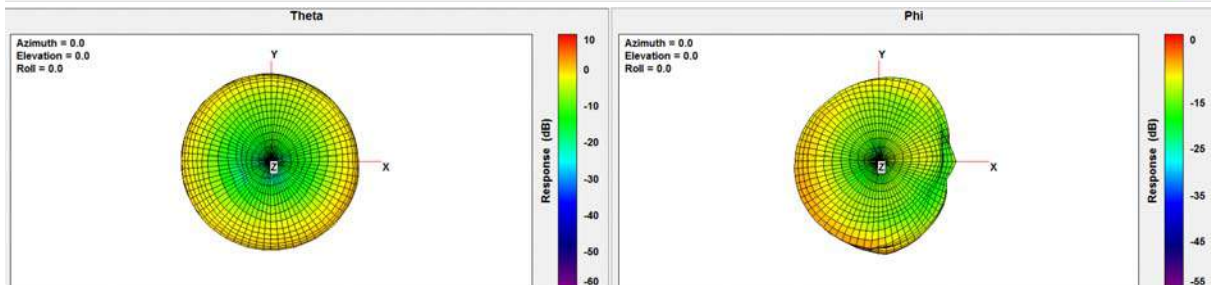
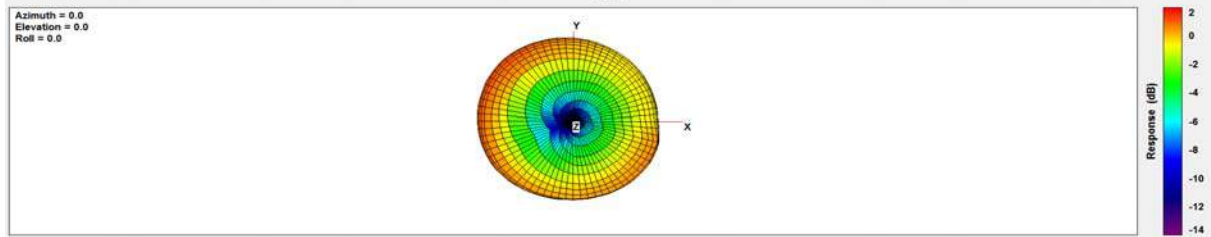




Total



Total



Total

