

# GPS/GLONASS Passive Antenna

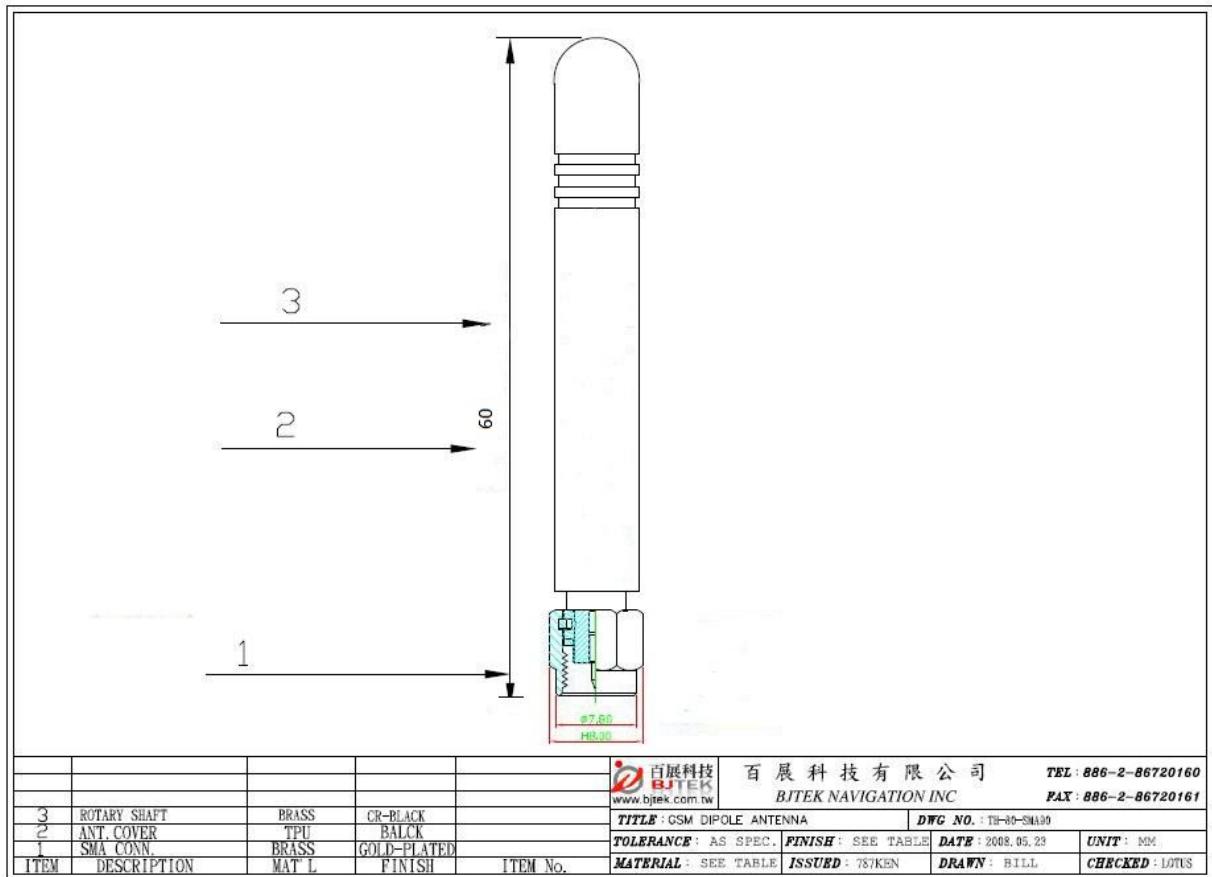
**MODEL: TH-85B-SMA(M)**



## Specifications:

<b>Frequency range:</b>	<b>1570~1610Mhz</b>
<b>Gain:</b>	<b>0-1 dB</b>
<b>Power Handling</b>	<b>Input power 1.5 Watt max.</b>
<b>V.S.W.R:</b>	<b>2.0:1</b>
<b>Impedence:</b>	<b>50 ohm</b>
<b>Connector:</b>	<b>SMA(P)</b>
<b>Dimension:</b>	<b>9.15(Dia.) X 60mm(L)</b>
<b>Weight:</b>	<b>5g (With Connector)</b>

\* This specification is subject to change without prior notice



VSWR Image measuring data for reference

