

Outdoor Omni 5.5G Antenna

MODEL: TH-5550

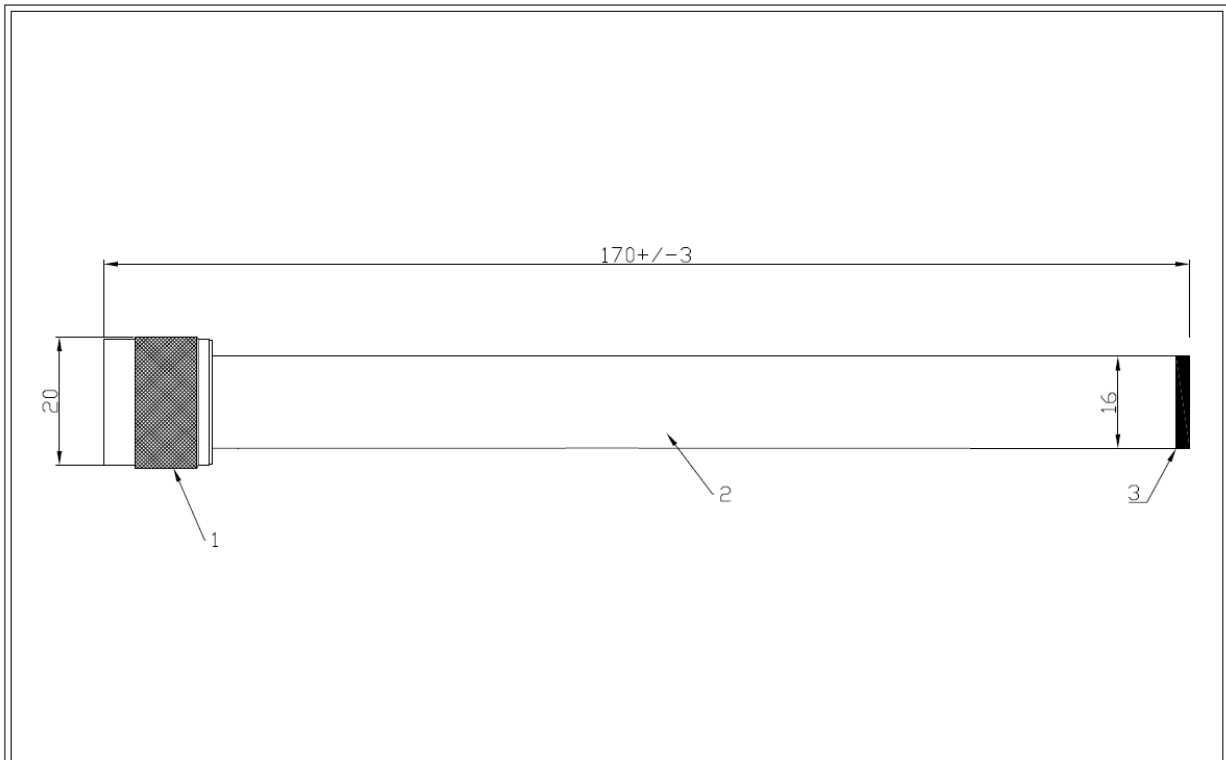


1. Electrical Properties

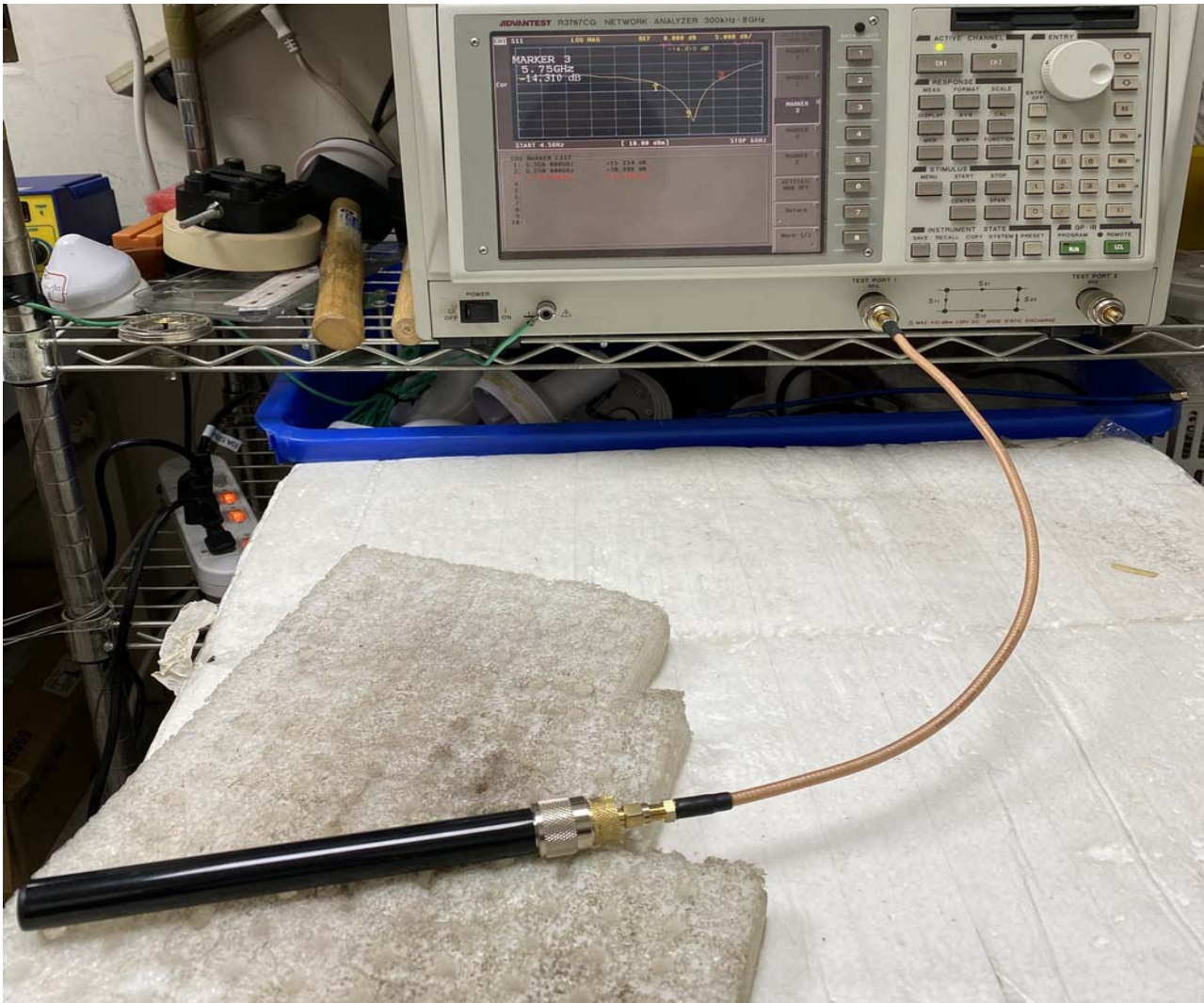
Parameter	Description
Frequency Band	5350-5750Mhz
Nominal Impedance	50 ohm
Polarization	Vertical
Electrical Wave	Dipole
Return Loss	Please See Data-1
V.S.W.R	2.0:1
Antenna Peak Gain	5dBi

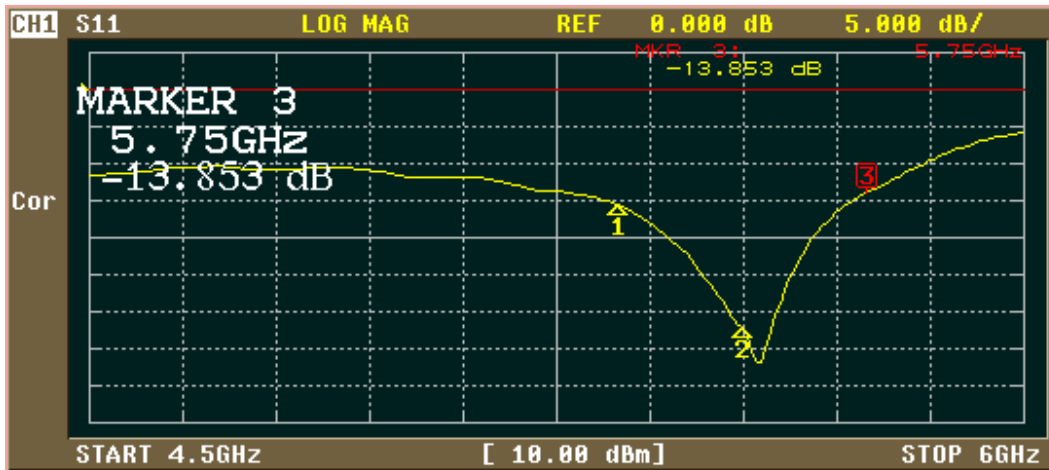
2. Mechanical Properties

Parameter	Description
Antenna Type	External Antenna
Connector Type	N(M)
Antenna Dimensions	170 mm \pm 3
Antenna Color	ASA-UV-Black
Operating Temperature Range	-40°C~+80°C
Storage Temperature Range	-40°C~+80°C
Waterproof	IPX7



6					百展科技有限公司		TEL: 886-2-86720160	
5					BJTEK NAVIGATION INC		FAX: 886-2-86720161	
4					TITLE: 5.5G Antenna		DWG No.: TH-5550-N(M)	
3	ASA Black cap				TOLERANCE: AS SPEC.		DATE: 2020.01.03	
2	ASA Black tube				FINISH: SEE TABLE		UNIT: MM	
1	N(M) Connector				MATERIAL: SEE TABLE		ISSUED: BILL	
ITEM	DESCRIPTION	MAT'L	FINISH	ITEM No.	MATERIAL	ISSUED	DRAWN	CHECKED





CH1 MARKER LIST

1:	5.350 000GHz	-15.688 dB
2:	5.550 000GHz	-32.194 dB
3:	5.750 000GHz	-13.853 dB
4:		
5:		
6:		
7:		
8:		
9:		
10:		

COPY

PRINT

PLOT

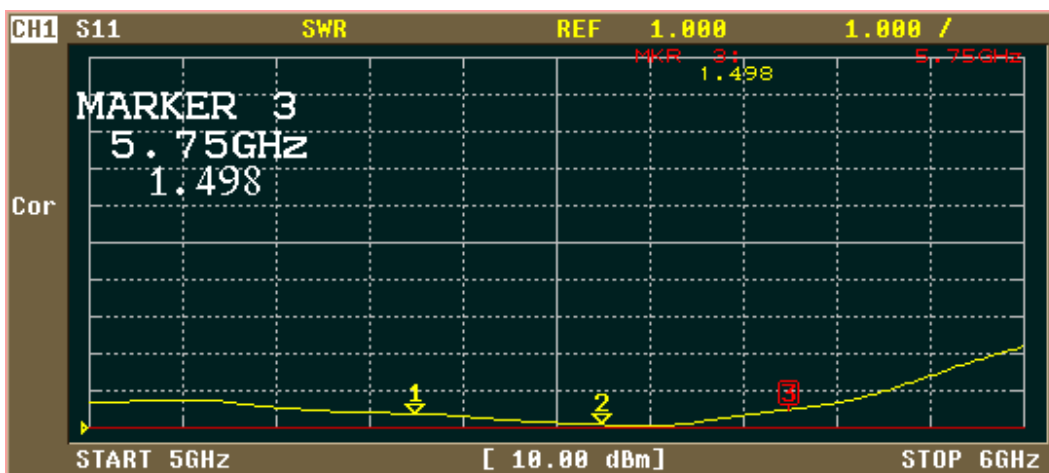
SELECT QUADRANT

DEFINE PLOT

CONFIGURE PLOT

PRINT/PLOT SETUPS

BITMAP FILE



CH1 MARKER LIST

1:	5.350 000GHz	1.381
2:	5.550 000GHz	1.000
3:	5.750 000GHz	1.498
4:		
5:		
6:		
7:		
8:		
9:		
10:		

ACTIVATE MARKER

MARKER 1

MARKER 2

MARKER 3

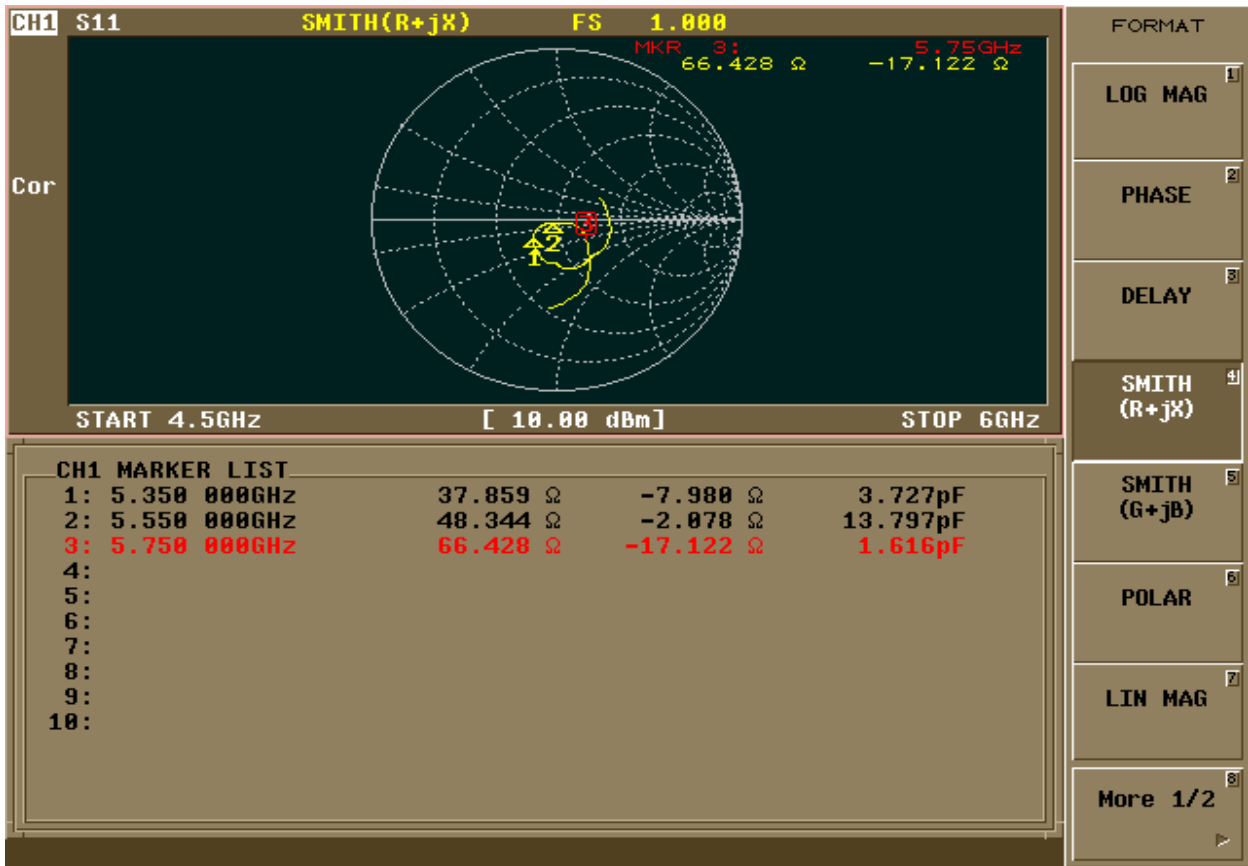
MARKER 4

MARKER 5

ACTIVATE MKR OFF

Return

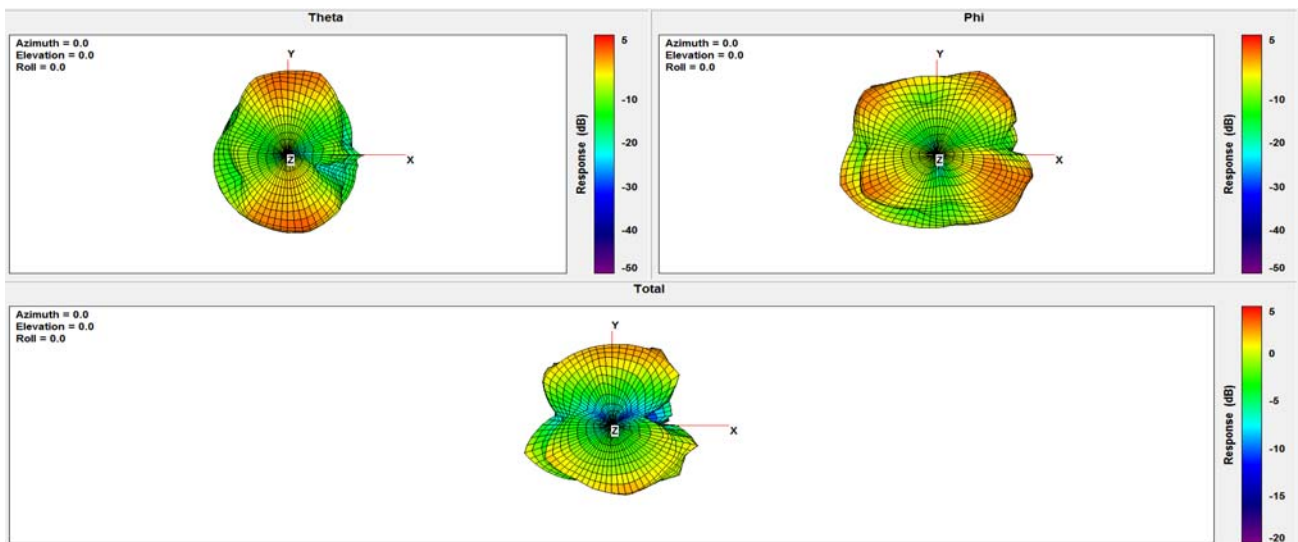
More 1/2



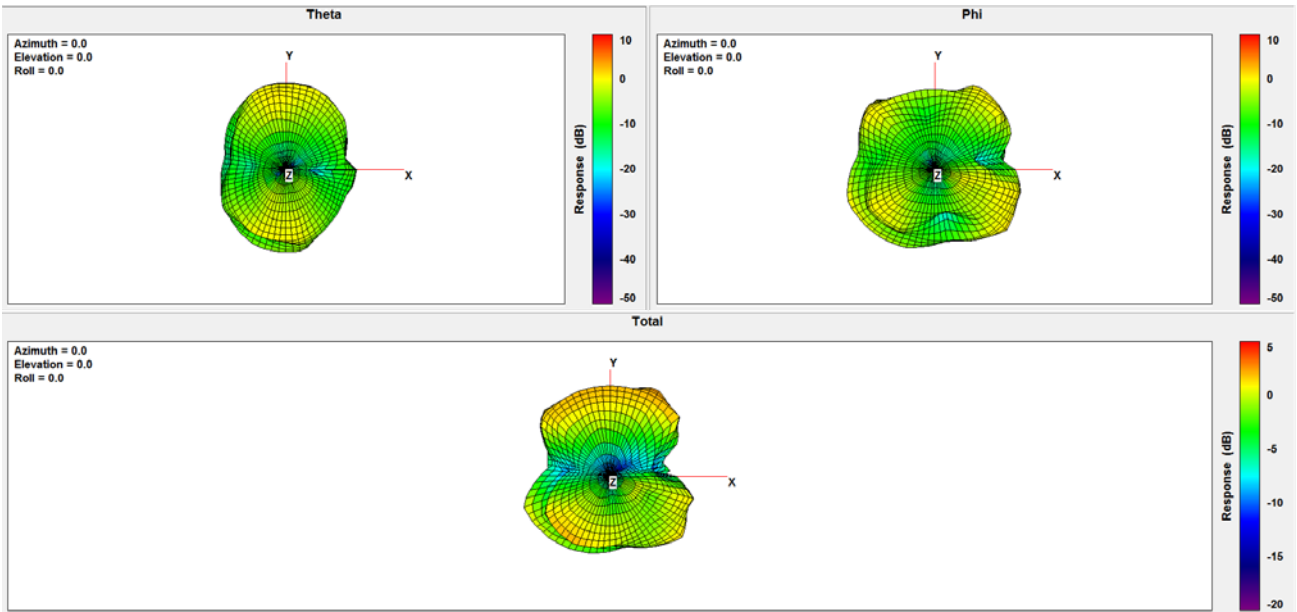
Test result:

Frequency (MHz)	5350	5400	5450	5500	5550	5600	5650	5700	5750		
Peak Gain (dBi)	5.41	5.78	5.67	5.74	5.29	5.91	5.89	5.48	5.69		
Efficiency (%)	61.58	71.42	79.88	76.74	76.09	78.23	70.46	65.70	66.14		

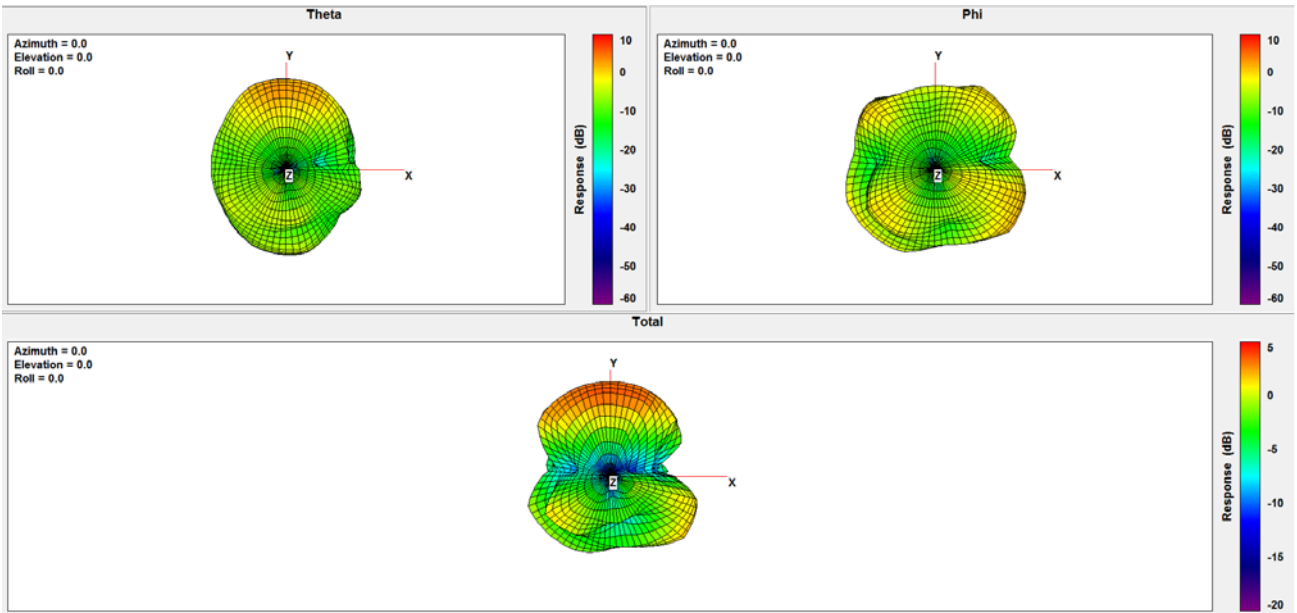
5.35G:



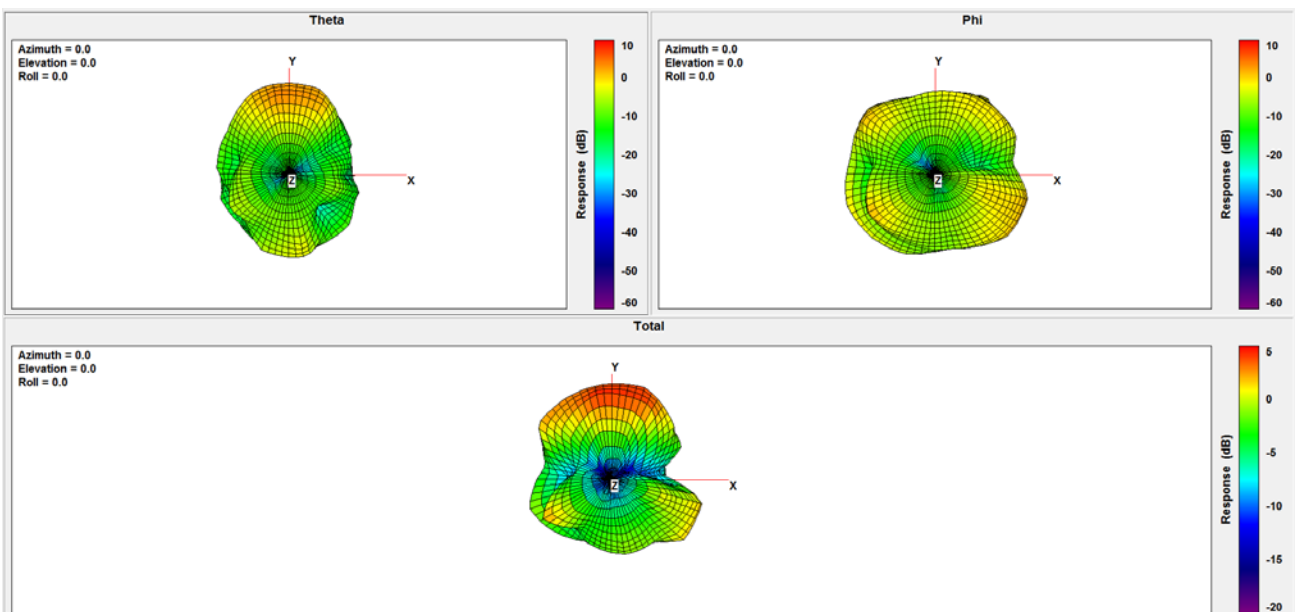
5.4G:



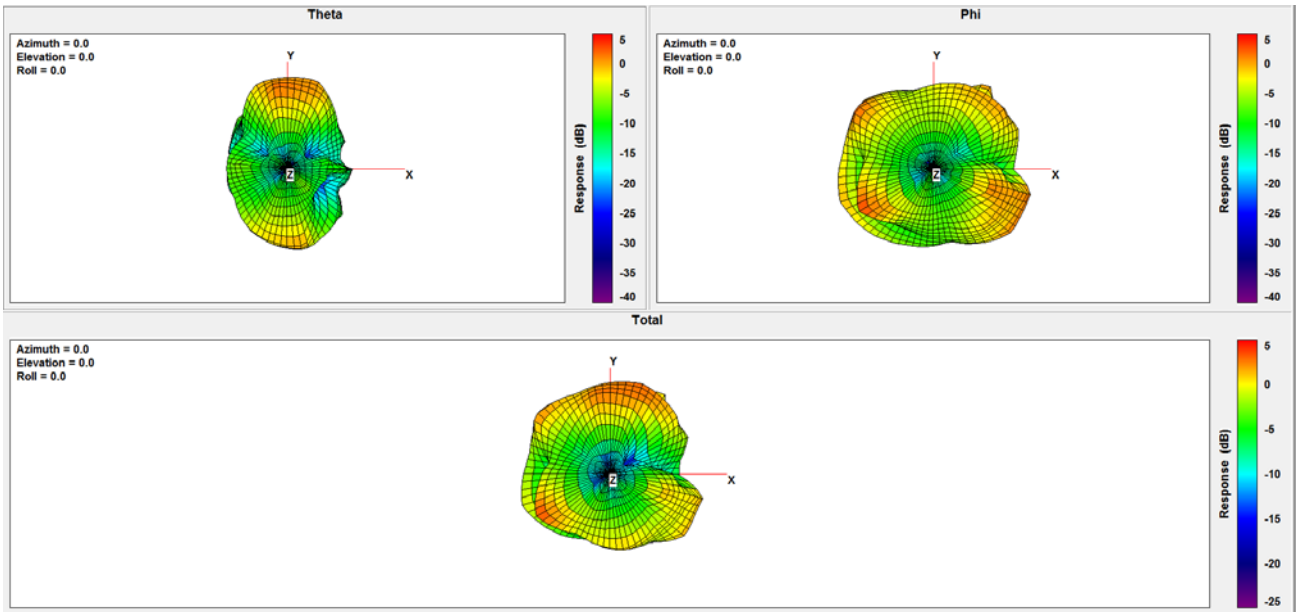
5.45G:



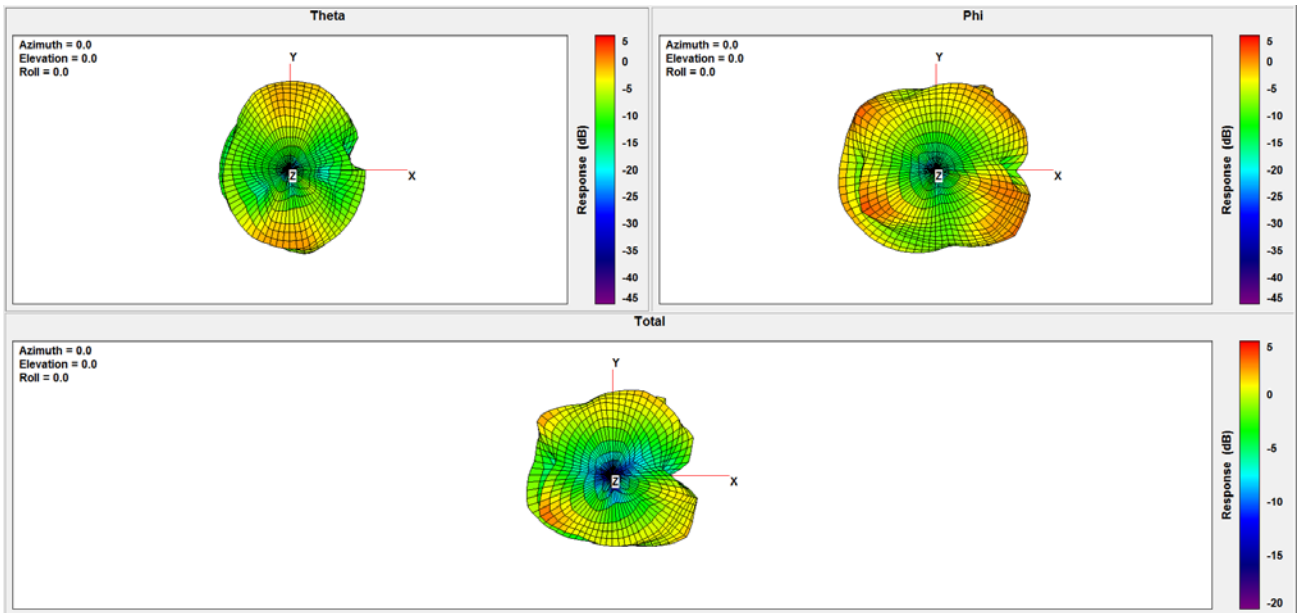
5.5G:



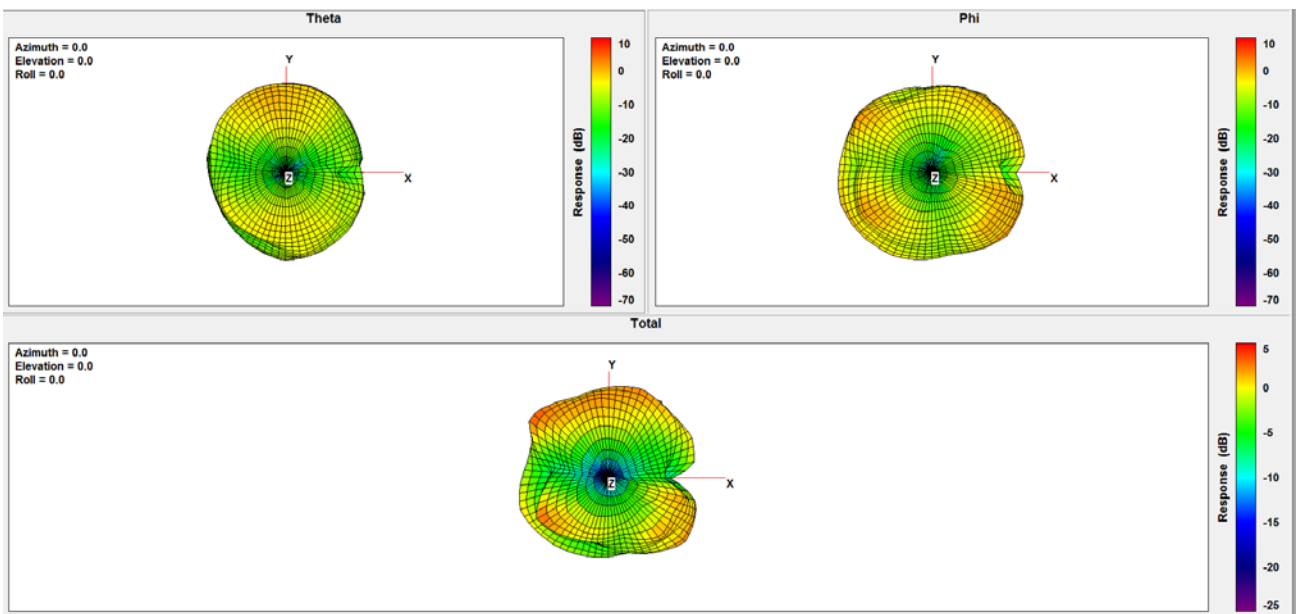
5.55G:



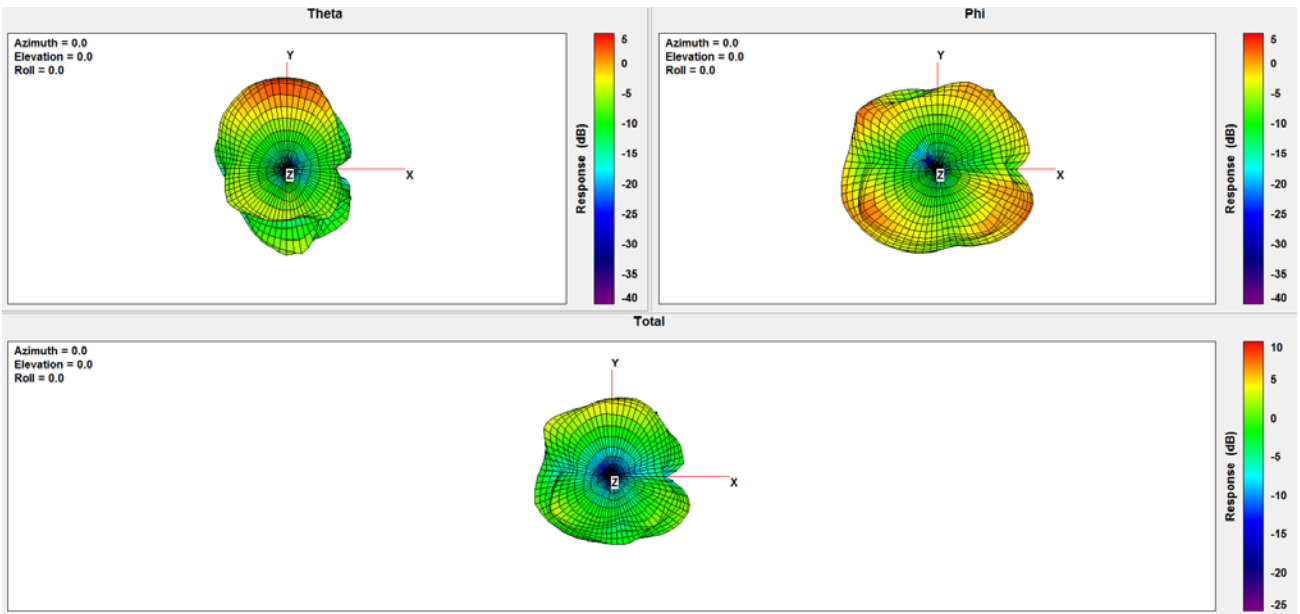
5.6G:



5.65G:



5.7G:



5.75G:

