

Outdoor Omni 2.4/5.8G Antenna

MODEL: TH-2458-3B

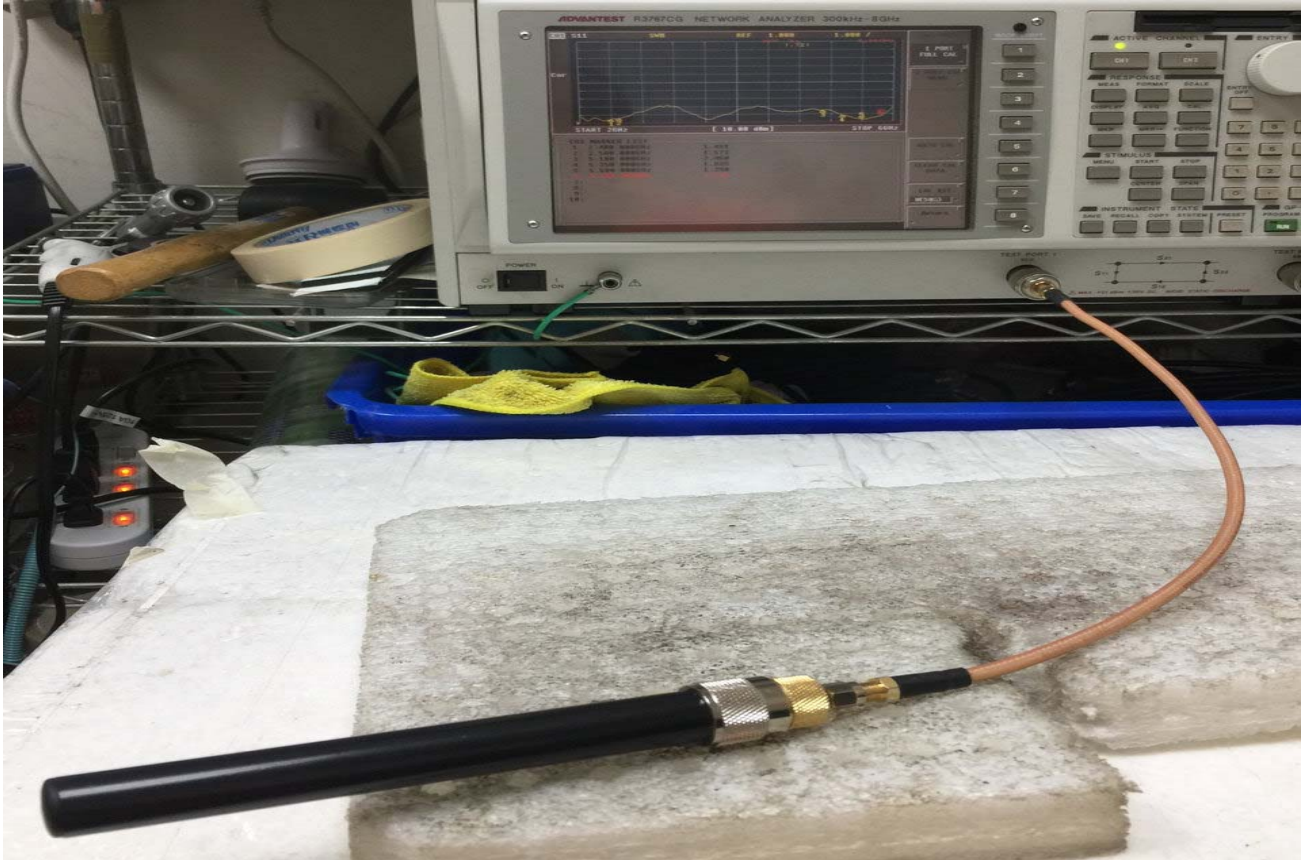
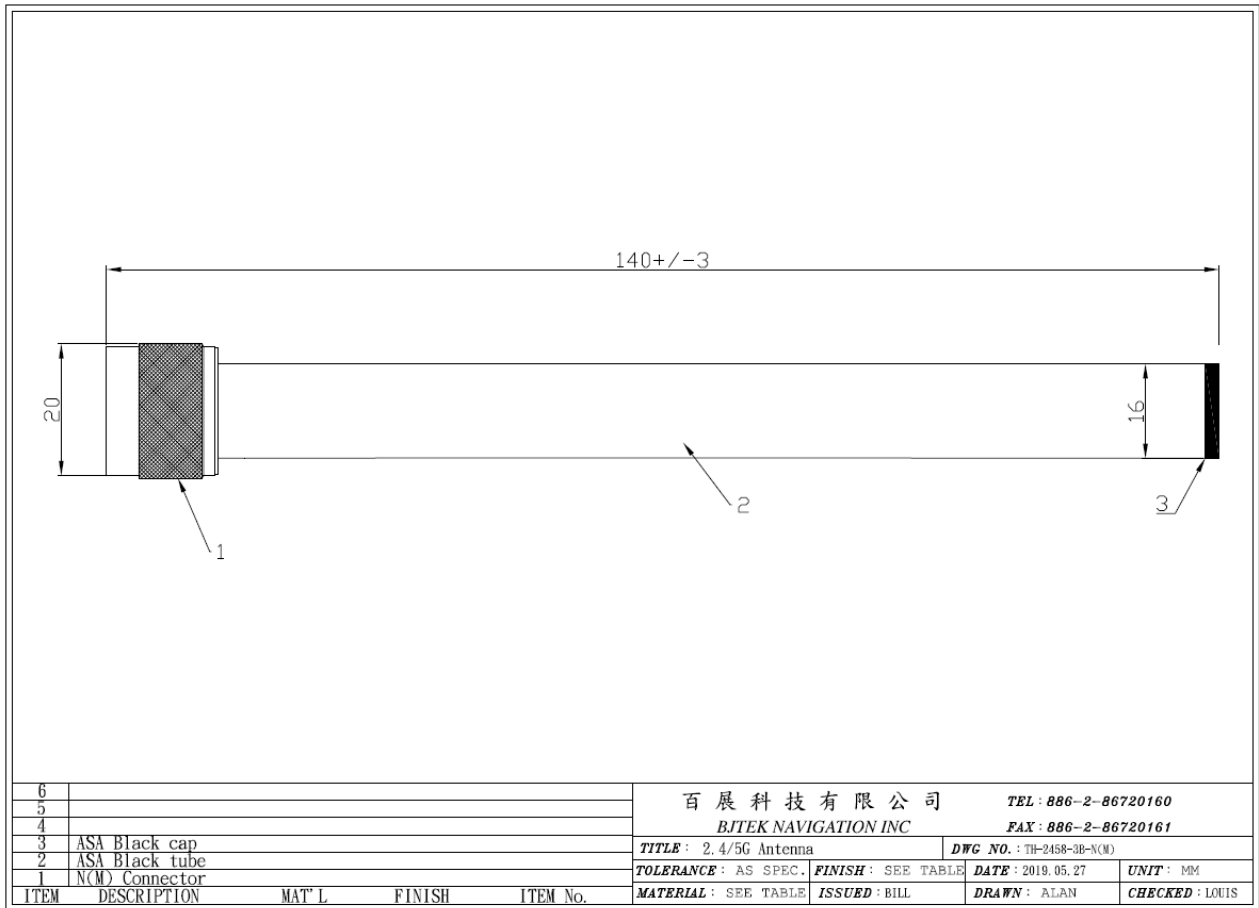


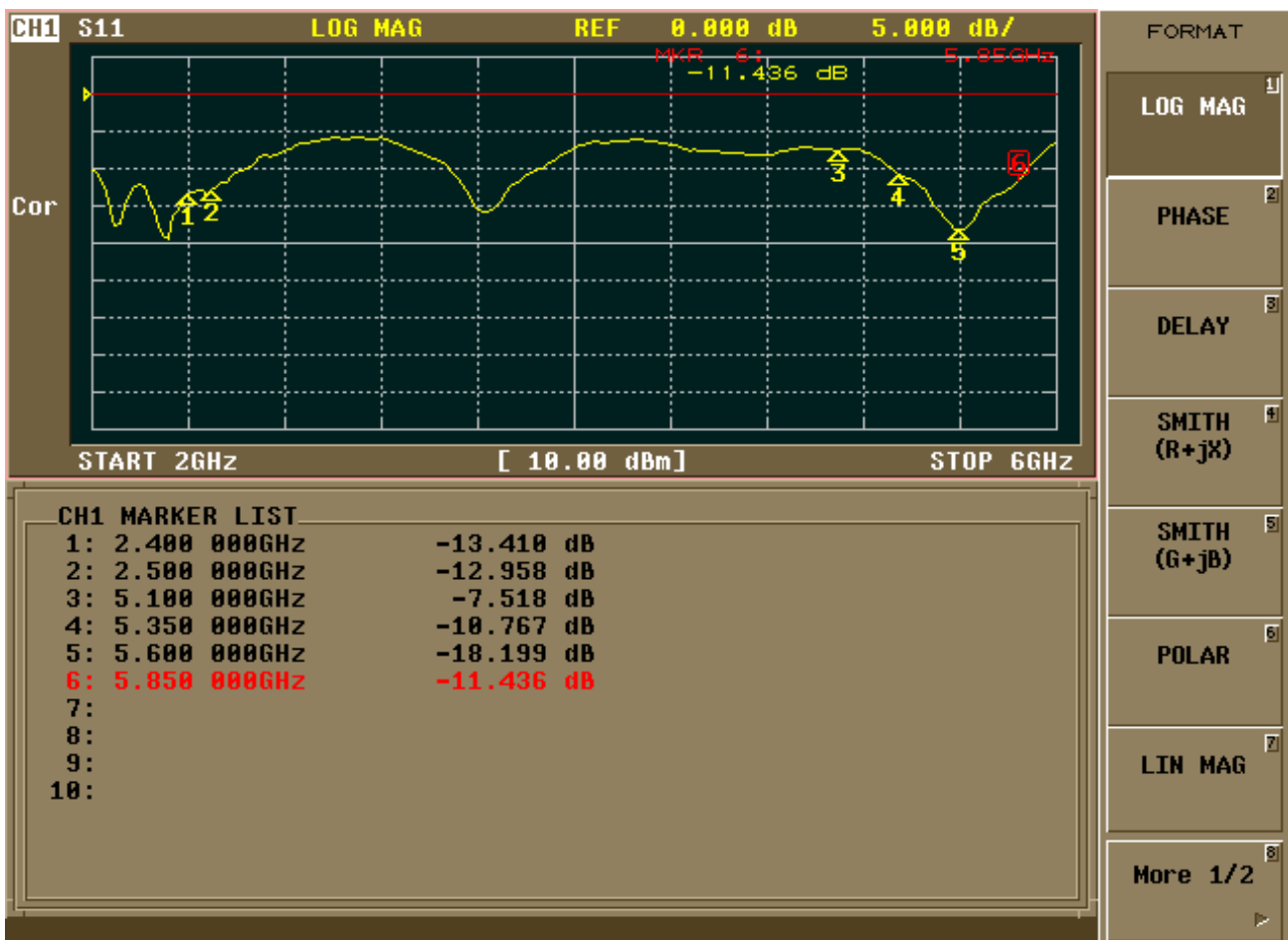
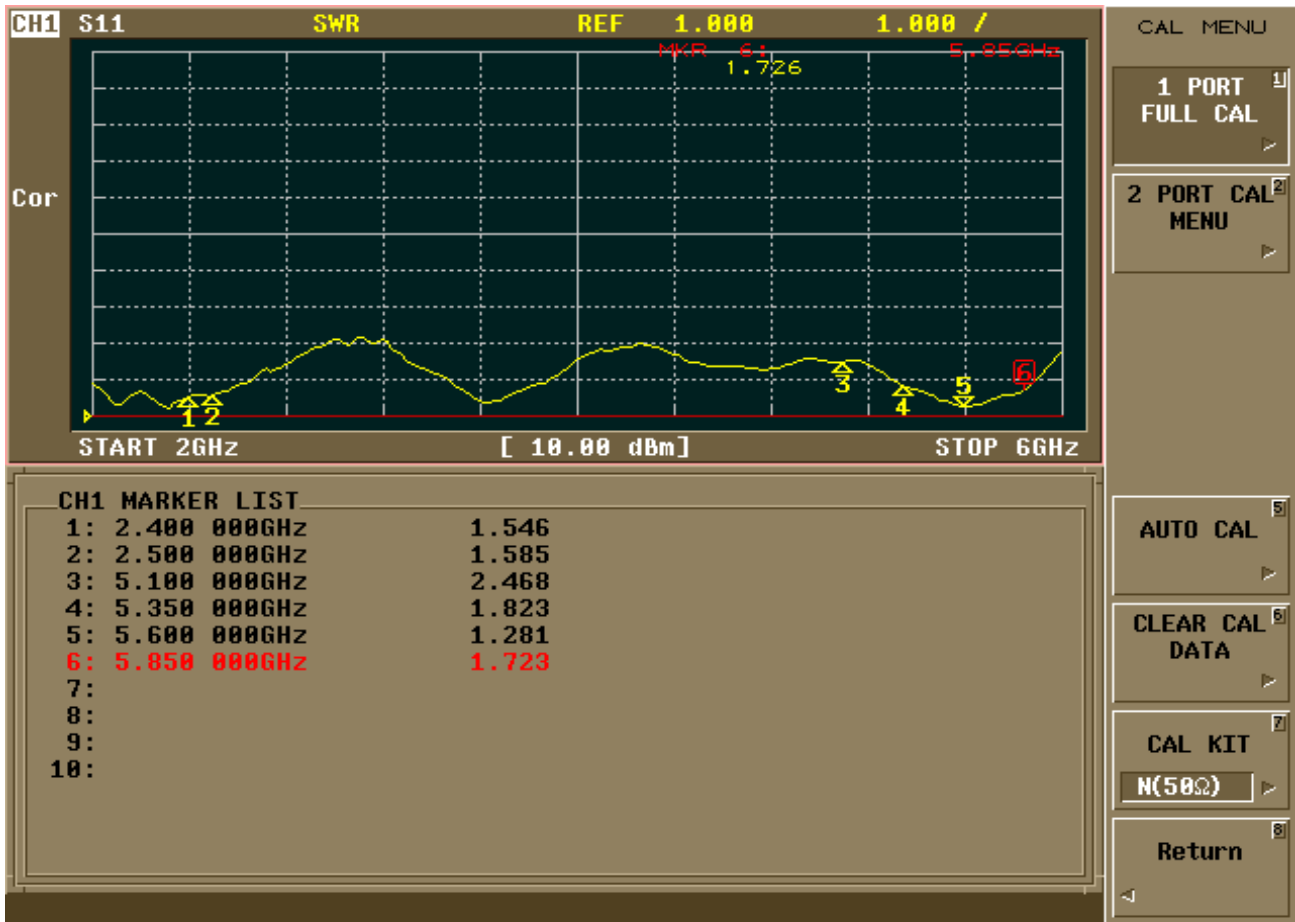
1. Electrica Properties

Parameter	Description
Frequency Band	2400-2500/5100-5850Mhz
Nominal Impedance	50 ohm
Polarization	Vertical
Electrical Wave	Dipole
Return Loss	Please See Data-1
V.S.W.R	3.0:1
Antenna Peak Gain	1-4dBi

2. Mechanical Properties

Parameter	Description
Antenna Type	External Antenna
Connector Type	N(M)
Antenna Dimensions	140 mm \pm 3
Antenna Color	ASA-UV-Black
Operating Temperature Range	-40°C~+80°C
Storage Temperature Range	-40°C~+80°C
Waterproof	IPX7



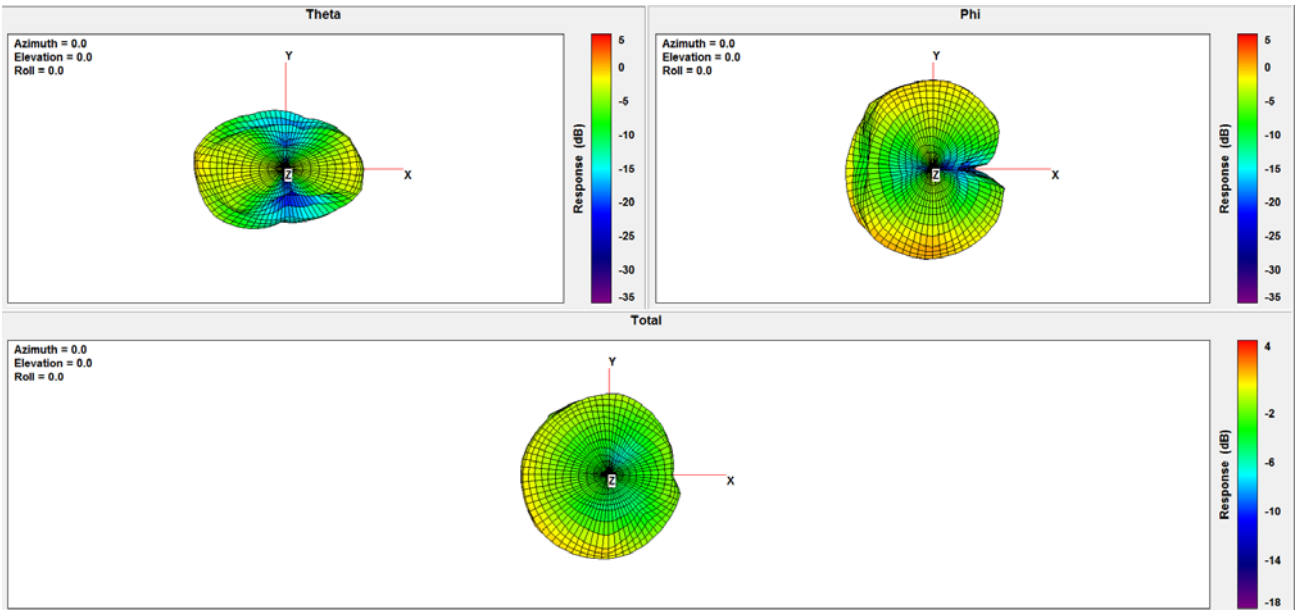




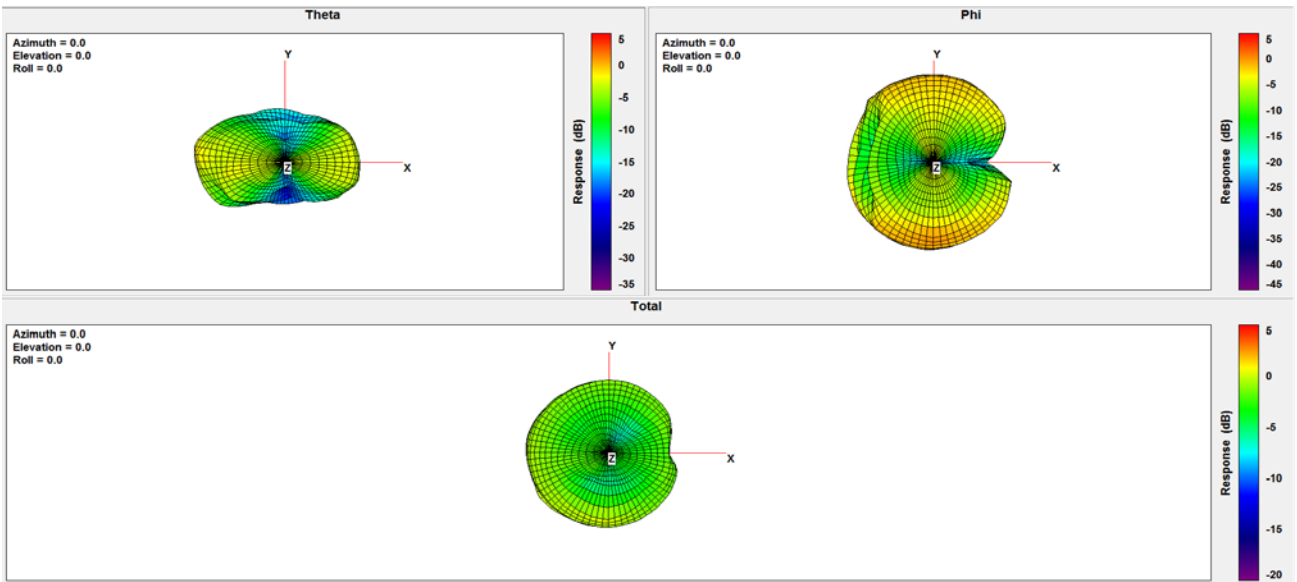
Test result:

Frequency (MHz)	2300	2350	2400	2410	2420	2430	2440	2450	2460	2470	2480
Peak Gain (dBi)	3.04	2.79	2.12	2.03	1.85	1.55	1.35	1.03	1.10	0.98	1.19
Efficiency (%)	61.15	64.34	62.67	62.06	59.79	57.68	57.55	55.45	56.68	56.07	56.08
Frequency (MHz)	2490	2500	2550	2600	2650	2700	5150	5250	5350	5470	5600
Peak Gain (dBi)	1.25	1.25	1.68	1.92	2.11	1.82	3.51	3.99	4.19	4.24	4.20
Efficiency (%)	56.00	55.72	58.48	58.40	57.02	53.02	57.78	57.86	62.80	59.98	59.84
Frequency (MHz)	5725	5785	5875	6000							
Peak Gain (dBi)	3.59	3.38	2.36	2.72							
Efficiency (%)	58.60	57.00	52.29	47.29							

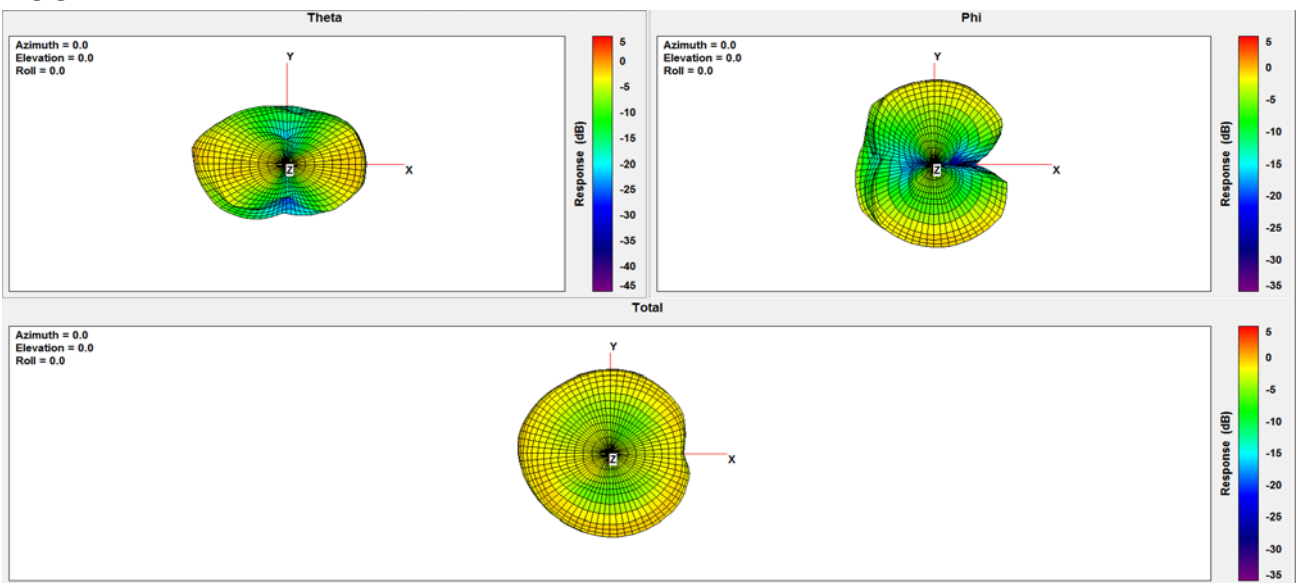
2.4G:



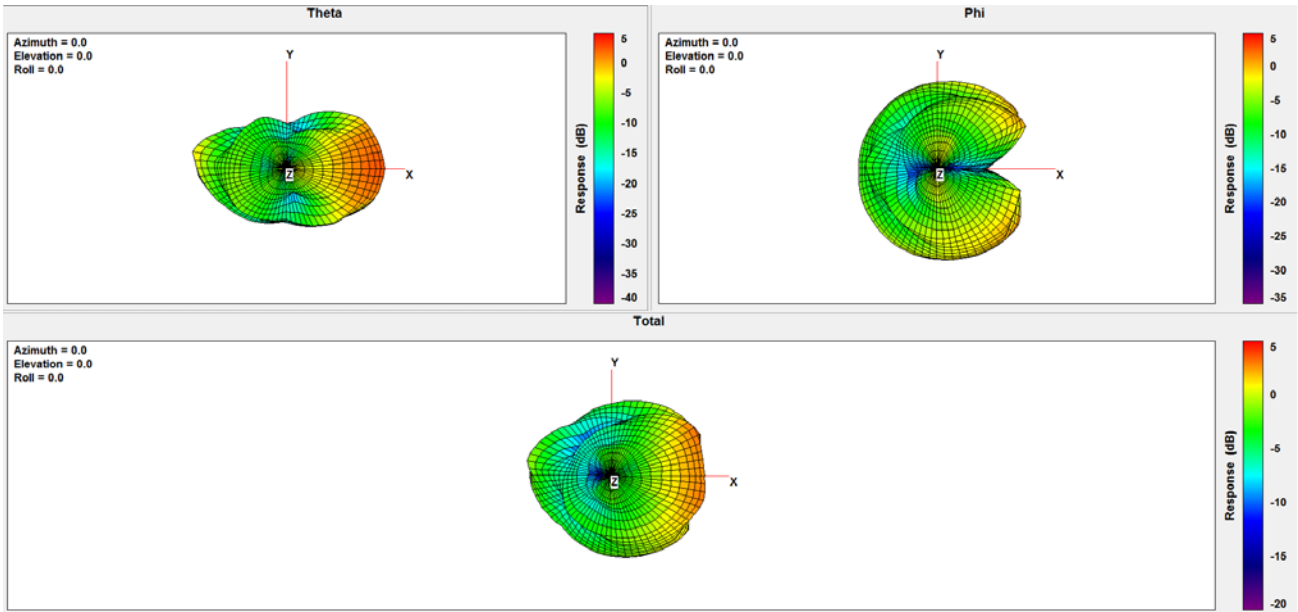
2.45G:



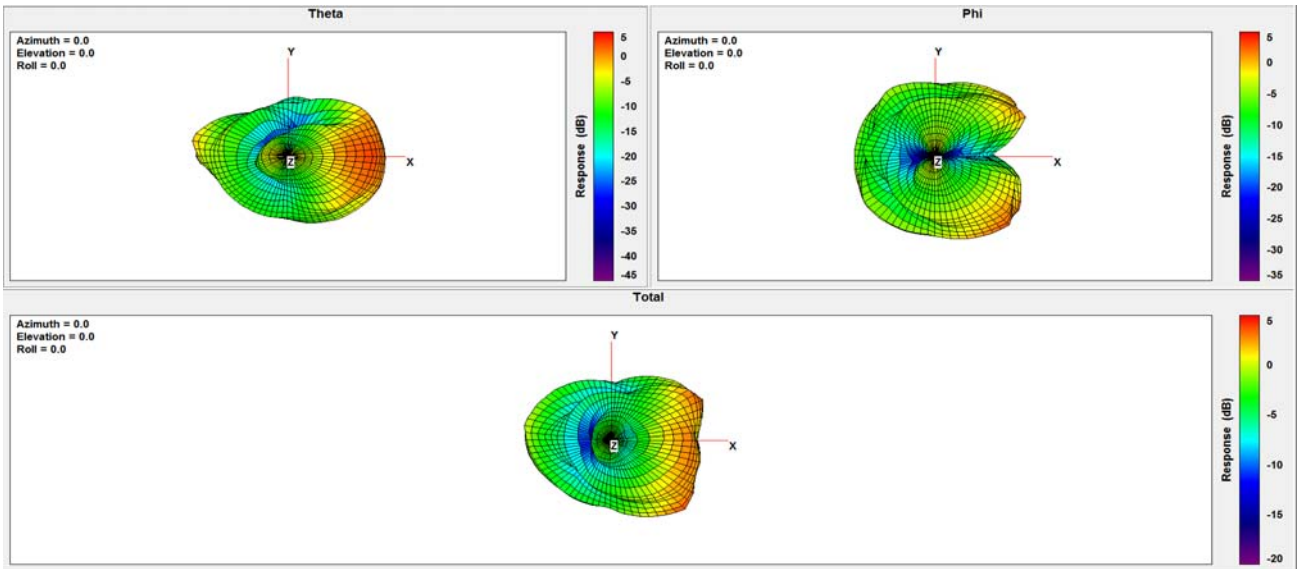
2.5G:



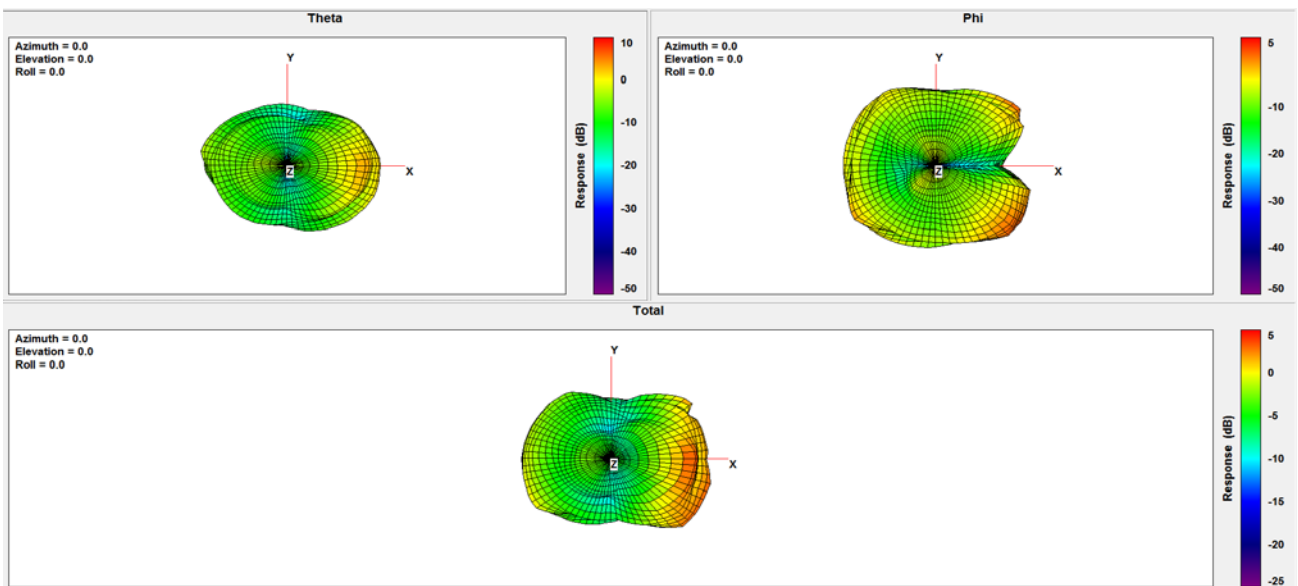
5.15G:



5.35G:



5.6G:



5.85G:

