

# UHF Omni Antenna

Model : TH-610B



## 1.. GENERAL DESCRIPTION

P/N
TH-610-N(M)

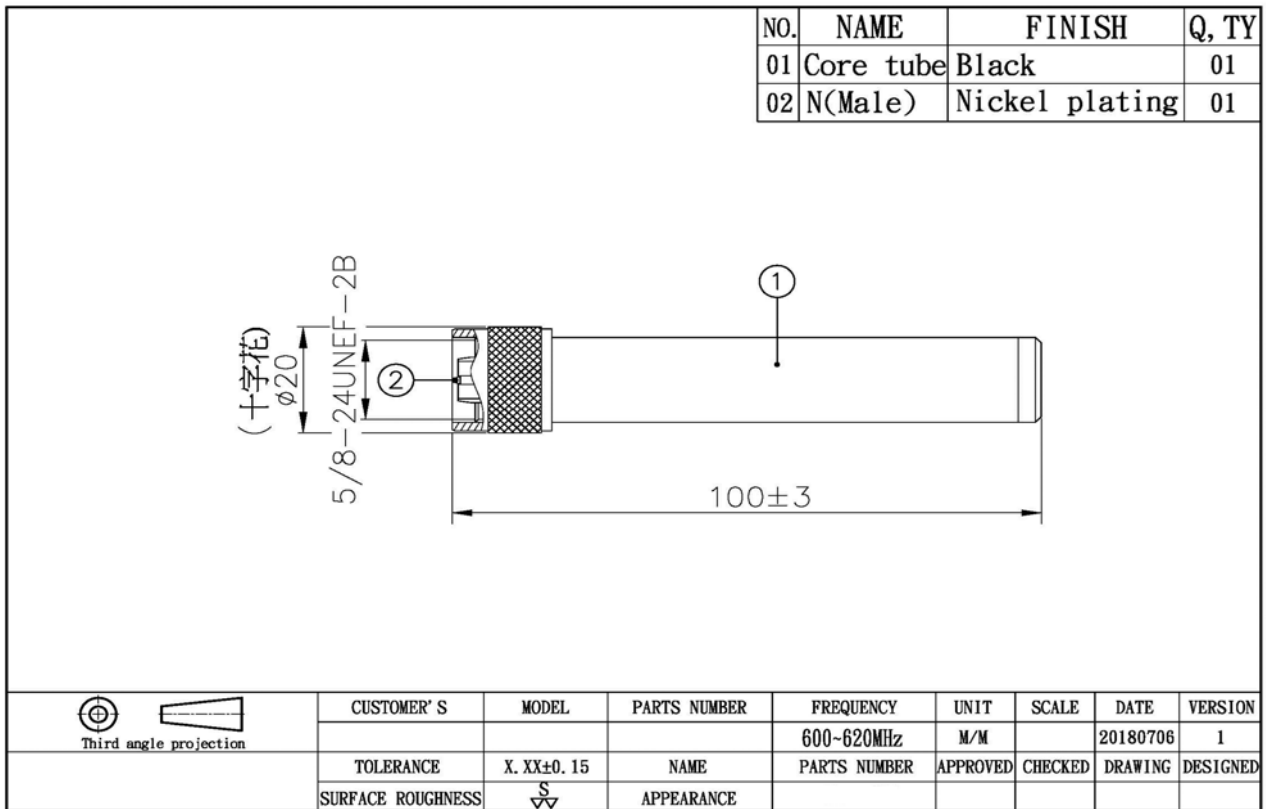
### 1.1 Electrical Properties

Parameter	Description
Frequency Band	600~620MHz
Nominal Impedance	50 ohm
Polarization	Vertical
V.S.W.R	2.0:1

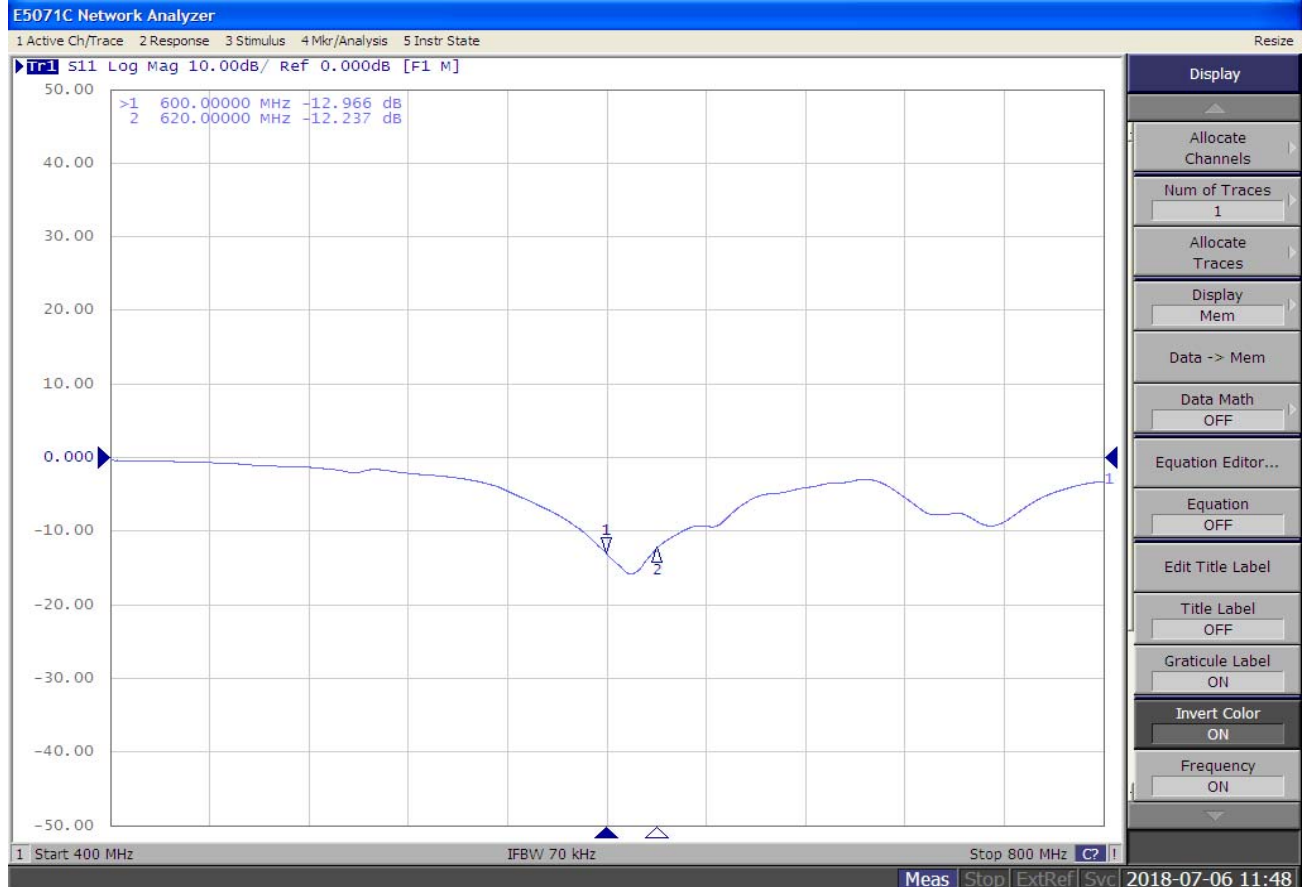
### 1.2 Mechanical Properties

Parameter	Description
Antenna Type	External Antenna
Material	PVC
Mount Type	Screw Type
Connector Type	N Connector (Male)
Antenna Dimensions	100mm ±3
Antenna Color	Black
Operating Temperature Range	-30°C~+70°C
Storage Temperature Range	-30°C~+70°C

## 2. Appearance



## 3. Return Loss, V.S.W.R. and Smith Chart

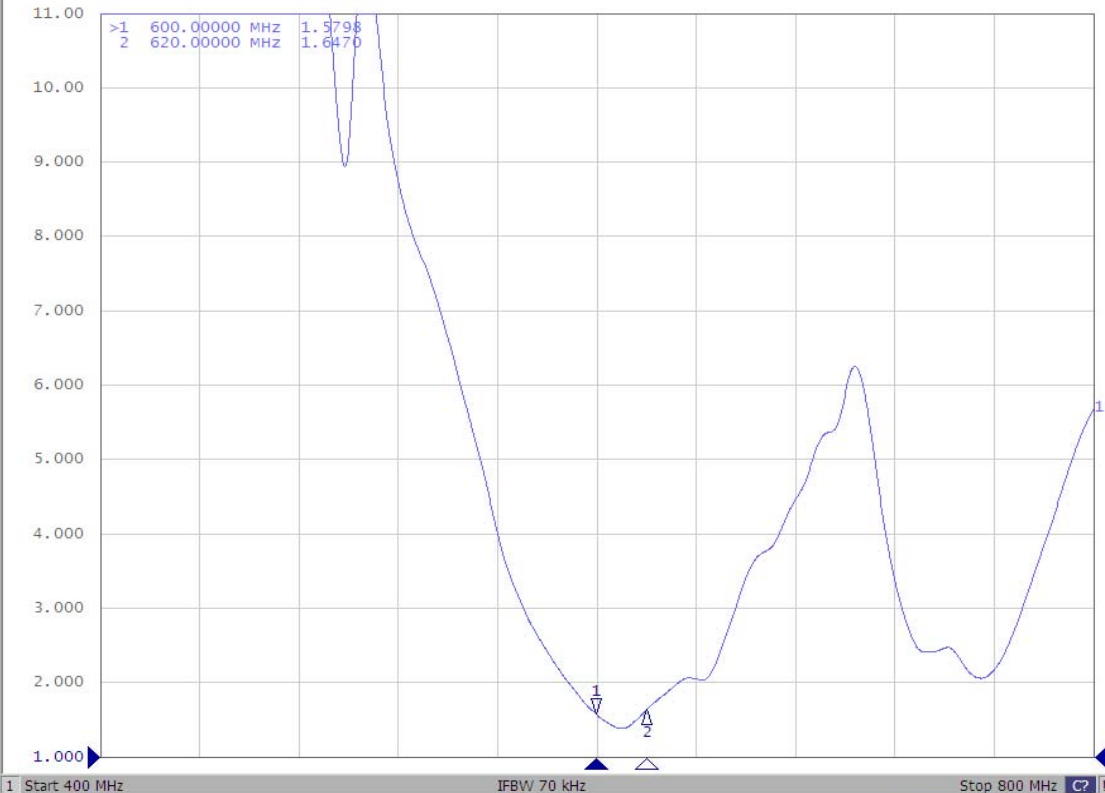


E5071C Network Analyzer

1 Active Ch/Trace 2 Response 3 Stimulus 4 Mkr/Analysis 5 Instr State

Resize

Tr1 S11 SWR 1.000/ Ref 1.000 [F1 M]



1 Start 400 MHz IFBW 70 kHz Stop 800 MHz

Meas Stop ExtRef Svc 2018-07-06 11:49

Format

SWR

Log Mag

Phase

Group Delay

Smith

Polar

Lin Mag

SWR

Real

Imaginary

Expand Phase

Positive Phase

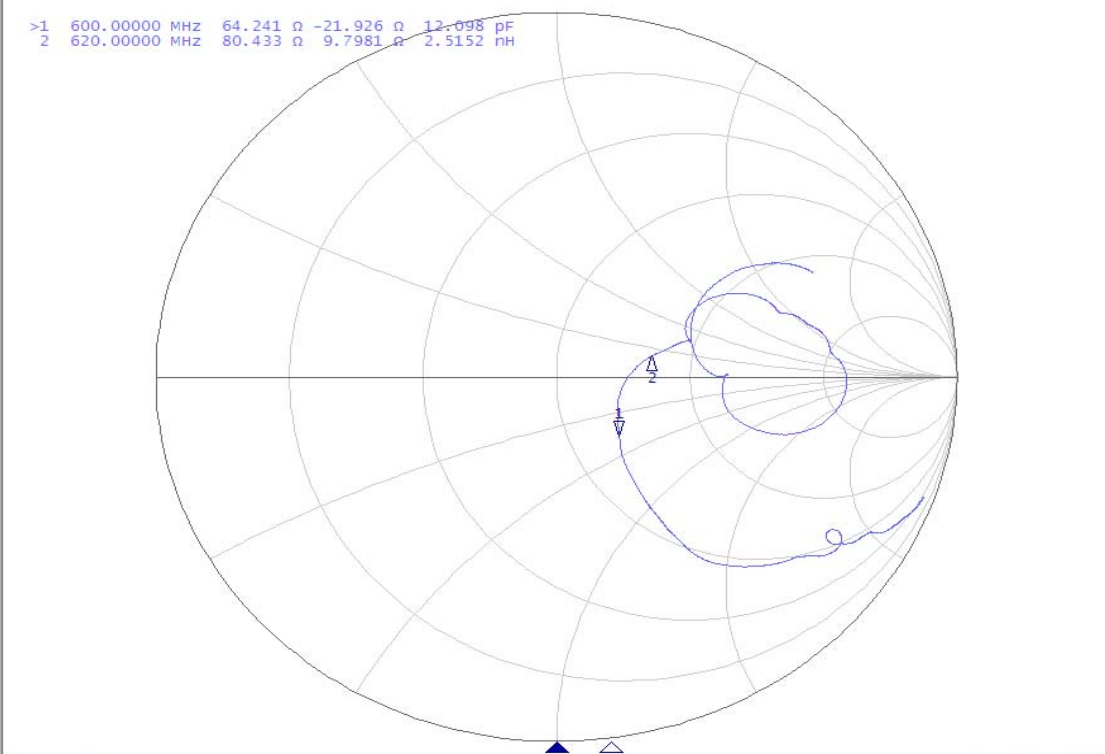
Return

E5071C Network Analyzer

1 Active Ch/Trace 2 Response 3 Stimulus 4 Mkr/Analysis 5 Instr State

Resize

Tr1 S11 smith (R+jX) scale 1.000u [F1 M]



1 Start 400 MHz IFBW 70 kHz Stop 800 MHz

Meas Stop ExtRef Svc 2018-07-06 11:49

Format

Smith (R+jX)

Log Mag

Phase

Group Delay

Smith

R + jX

Polar

Lin Mag

SWR

Real

Imaginary

Expand Phase

Positive Phase

Return