

UHF Bendable Antenna

MODEL: TH-580B



1. GENERAL DESCRIPTION

Model No	P/N
TH-580B	TH580B-SMA(M)

Below is a table summarizing the antenna design specification.

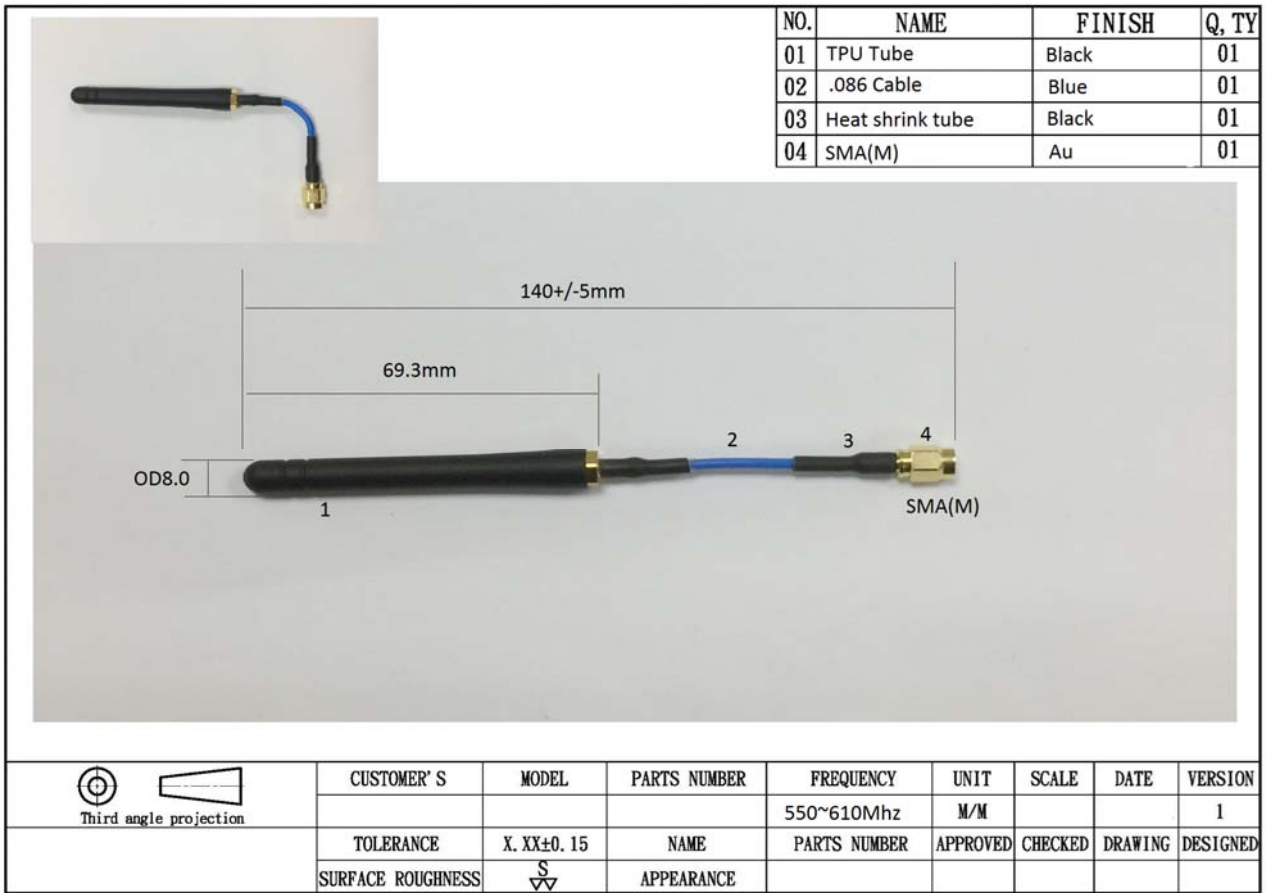
1.1 Electrical Properties

Parameter	Description
Frequency Band	550~610 MHz (580Mhz)
Nominal Impedance	50 ohm
Polarization	Vertical
Electrical Wave	Dipole
Return Loss	Please See Data-1
V.S.W.R	2.0 : 1
Gain	0db

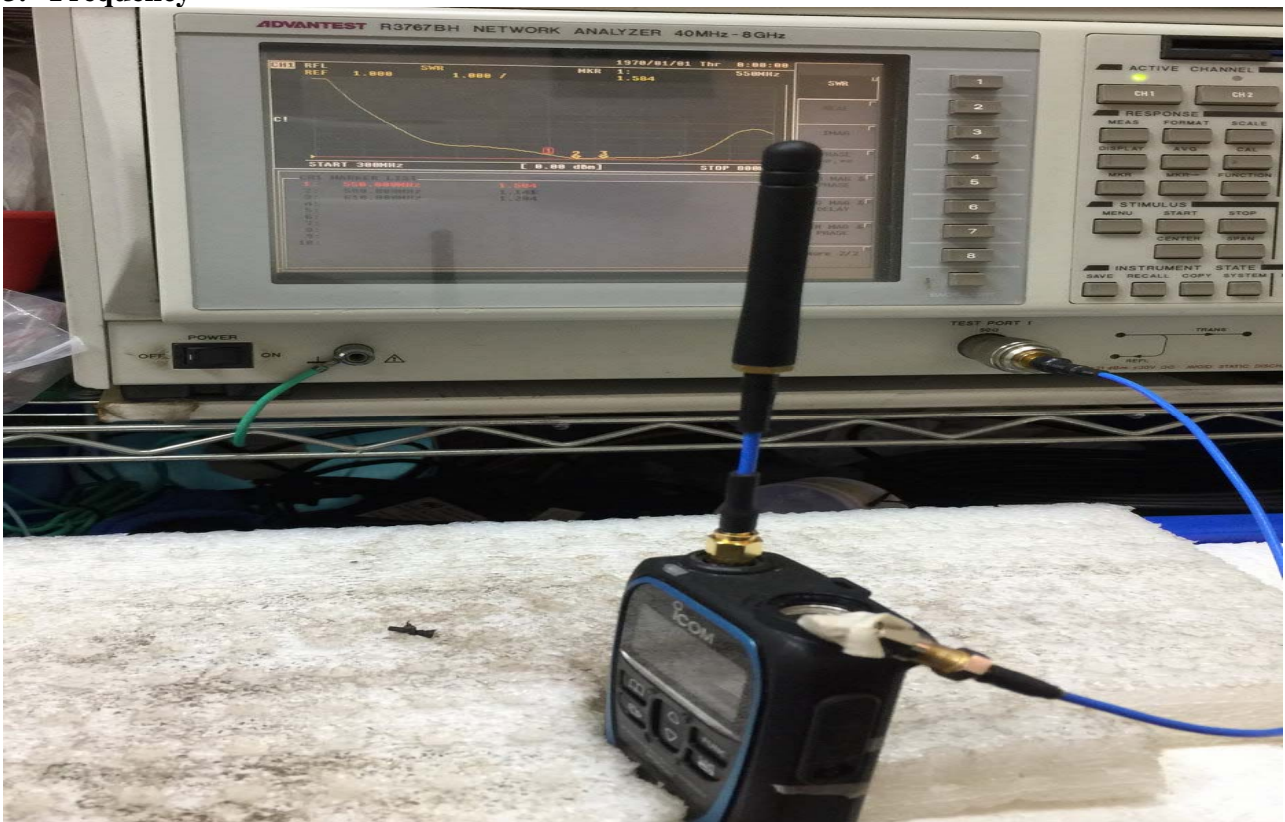
1.2 Mechanical Properties

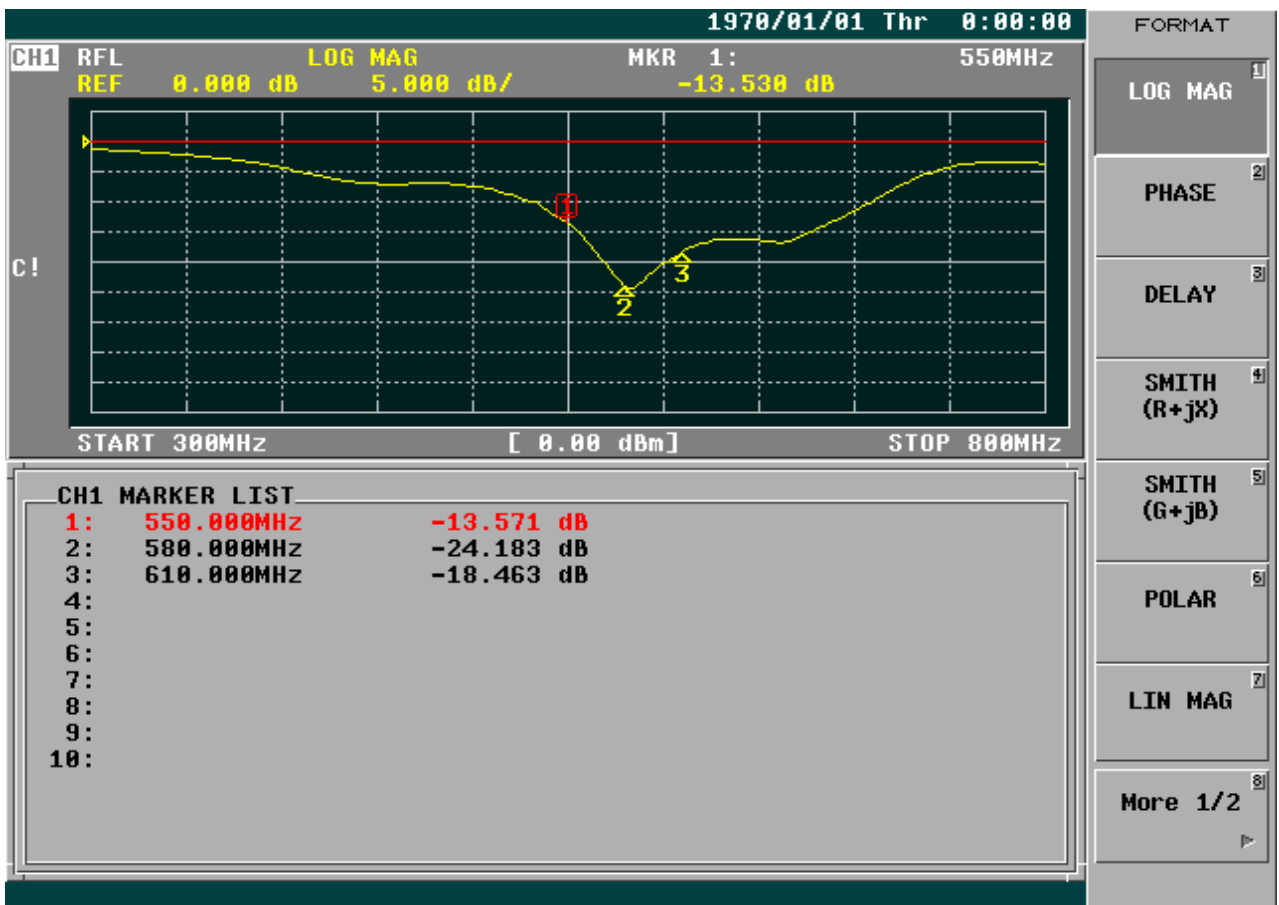
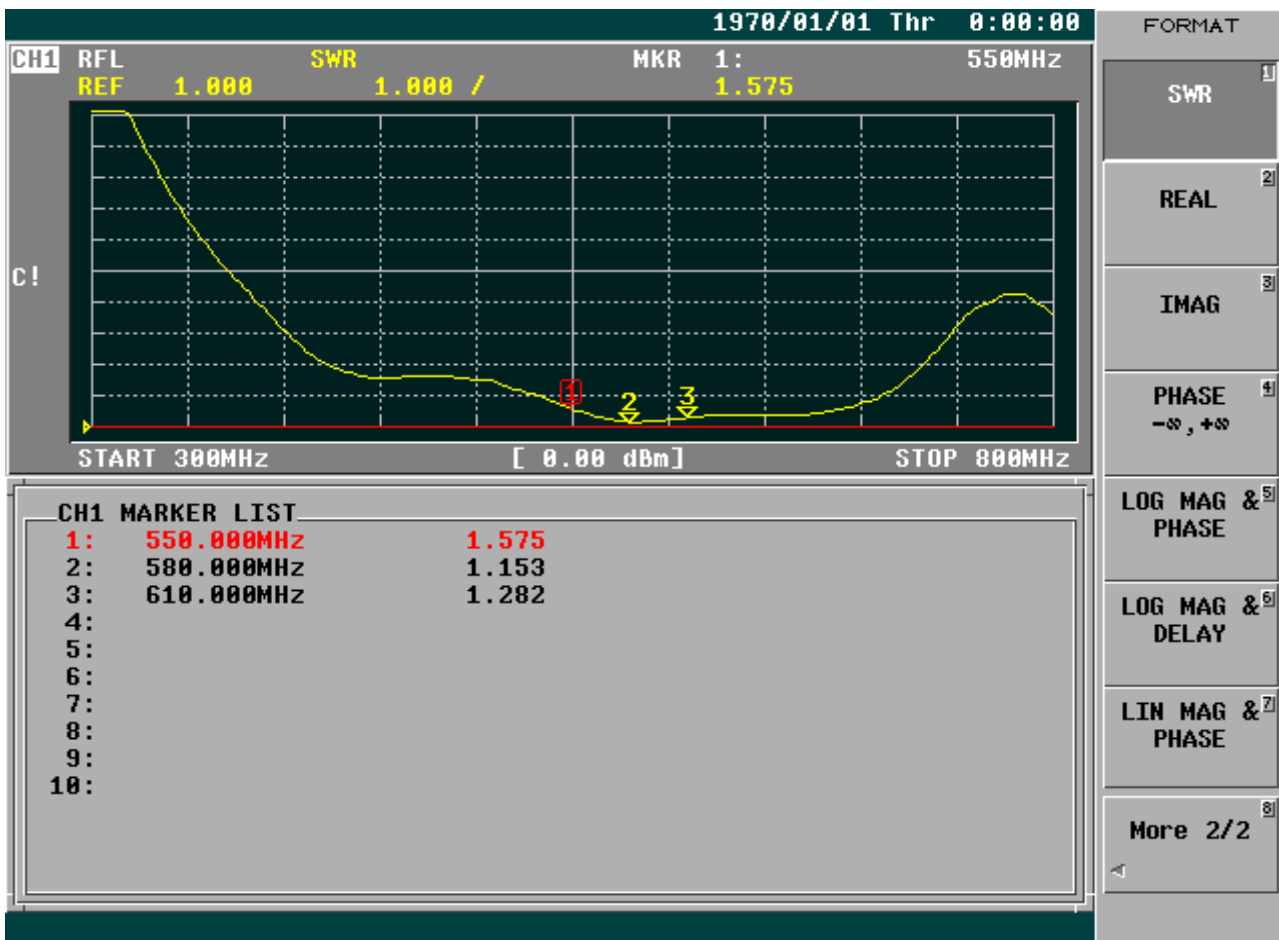
Parameter	Description
Antenna Type	External Antenna
Touch Type	Screw Type
Connector Type	SMA(Male)
Antenna Dimensions	140mm \pm 5
Antenna Color	Black
Operating Temperature Range	-30°C~+70°C
Storage Temperature Range	-30°C~+70°C

2. Appearance



3. Frequency

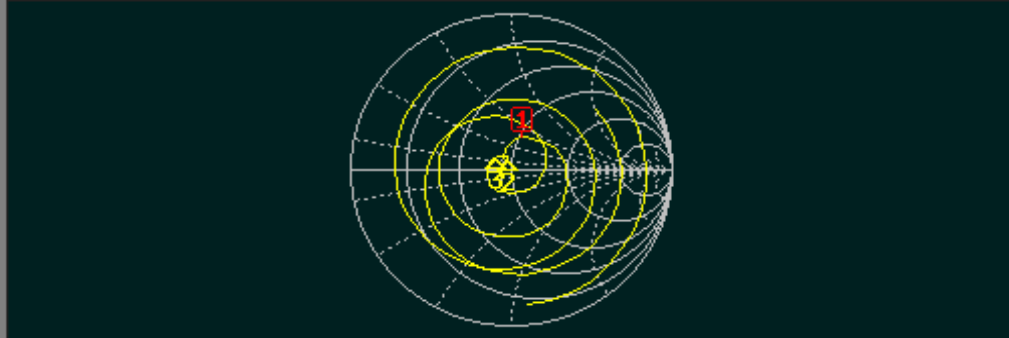




1970/01/01 Thr 0:00:00

CH1 RFL SMITH(R+jX) MKR 1: 550MHz
FS 1.000 52.026 Ω 22.121 Ω

C!



START 300MHz [0.00 dBm] STOP 800MHz

CH1 MARKER LIST

1:	550.000MHz	52.026 Ω	22.121 Ω	6.401nH
2:	580.000MHz	46.962 Ω	5.467 Ω	1.500nH
3:	610.000MHz	41.035 Ω	6.589 Ω	1.719nH
4:				
5:				
6:				
7:				
8:				
9:				
10:				

FORMAT

LOG MAG

PHASE

DELAY

SMITH
(R+jX)

SMITH
(G+jB)

POLAR

LIN MAG

More 1/2